

Campus Planning Committee

Wednesday, September 4, 2019, 3:30 PM

1. Introductions
2. Membership Updates
3. Approval of the Minutes- September 5, 2018
4. Campus Planning Committee Charge
5. Information Items:
 - a. Updates to the Campus Master Plan 2017-2027
 - b. Capital Outlay- Five Year Facilities Plan for Las Cruces Campus
 - c. Campus Wayfinding and Signage Policy updates, draft for review
 - d. Story Tree recommendations of great storytellers
 - e. Monumental Signage, schedule and update on locations
6. Action Items:
 - a. Baseball Training Facility
7. Next Meeting: Wednesday, October 2, 2019, 3:30PM, FS LCR

New Mexico State University



Heather Zack Watenpaugh
University Architect



**Preserve the past and plan for the future of
facilities and the campus**



Be Bold. Shape the Future.
New Mexico State University
nmsu.edu

Facilities and Services

4. Campus Planning Committee Charge:

- Established by the President as an advisory group
- Review impact of visual, physical appearance of the campus
- NMSU's heritage preservation (historic preservation) committee
- Wayfinding/Signage policy
- CPC review projects within the triangle of I25/I10 and University Avenue, including ADI and Arrowhead
- Recommendations to the President for final approval



5.a. Updates to the Campus Master Plan 2017-2027

- Presented final text to the Board of Regents, 5/11/2018
- The completed and finalized document is on-line, <http://architect.nmsu.edu/masterplan/>

1. Arrowhead Park- District 6

- The 2015 Arrowhead Park Master Plan envisioned development districts for Education & Innovation, Research, a Creative Campus, and future Retail and Town Center areas; these updates are consistent with that vision.
- Development of a 2-3 MW Solar Power Generation and Battery Storage facility as a key Sustainability and Future Energy SmartGrid research initiative for NMSU in collaboration with El Paso Electric.
- The EPE Solar Array will be constructed on a 29.89 acre portion of land south of Cholla Road at the southern tip of the Park, acreage previously dedicated to the Creative Campus development.
- The Creative Campus development will be relocated across Cholla Road to the old greenhouse site.
- Inclusion of a new 70,000 SF new facility for the Creative Campus, Film and TV Studio project, which is a partnership between the City of Las Cruces and a private development group.



5.a. Updates to the Campus Master Plan 2017-2027

1. Arrowhead Park- District 6 (cont.)

- Inclusion of a new facility for DACC to fund and build a Creative Media Technology program at Arrowhead Park, adjacent to the Film and TV Studio, in order to encourage and foster collaboration and student opportunity.
- Inclusion of 35,000 SF speculative office building, adjacent to the BCOM site.

2. NMSU Athletics Master Plan, dated January 2019

3. NMSU Parking Lot Study, dated January 4, 2019

- These completed and finalized document is on-line, <https://facilities.nmsu.edu/library/>



5.b. Capital Outlay- Five Year Facilities Plan

New Mexico State University
Five Year Facilities Plan
Las Cruces.Final Campus

August 5, 2019

2020-2021 (2020 GO Bond)		
Agricultural Modernization and Educational Facilities Phase 2 w/open multidisciplinary labs	\$	25,000,000
<i>(Donor Fund Commitment expected for Phase 2 project \$8,500,000)</i>		
Science and Engineering facility renovations, upgrades, replacement for Ag Research		
Milton Hall Data Center Infrastructure Upgrades and replacement	\$	3,391,000
Ag Science Center improvements per assessment	\$	3,000,000
2021-2022 (Severance Tax Bond Year)		
Repair tunnel A sections	\$	3,000,000
Selective demolition per space plan	\$	1,000,000
Ag Science Center improvements per assessments	\$	1,300,000
Data Center Infrastructure Upgrades	\$	1,516,000
2022-2023 (2022 GO Bond)		
College of Engineering, Thomas and Brown	\$	20,000,000
Renovations, upgrades, construction, replacement		
Collaborative Learning Spaces and classroom renovations	\$	5,000,000
Data Center Infrastructure Upgrades	\$	1,513,000
2023-2024 (Severance Tax Bond Year)		
Classroom renovations	\$	1,000,000
Selective demolition per space plan	\$	1,000,000
Ag Science Center improvements per assessments	\$	1,300,000
Data Center Infrastructure Upgrades	\$	3,008,000
2024-2025 (2024 GO Bond)		
Chemistry Building Renovation	\$	18,000,000
Renovations, upgrades, construction		
Student Services/Visitor's and Welcome Center Facility	\$	5,000,000
O'Donnell Hall Renovation Phase 2 and addition	\$	5,000,000
Data Center Infrastructure Upgrades	\$	1,513,000

M:\Capital Outlay\2020\SA. HED Hearing Resubmittal\COPY of 2020 NMSU Facilities 5 Year Plan-Combined-20190805-ResubmittalLas Cruces.Fid# 1



Be Bold. Shape the Future.
New Mexico State University
nmsu.edu

Facilities and Services

5.b. Capital Outlay- Five Year Facilities Plan for LC Campus

2020-2021 (2020 GO Bond)

- Agricultural Modernization and Educational Facilities Phase 2 w/open multidisciplinary labs (\$25,000,000 with donor commitment for Ph. 2 project \$6,500,000)
- Milton Hall Data Center Infrastructure Upgrades (\$3,391,000)
- Ag Science Center improvements per assessment (\$3,000,000)



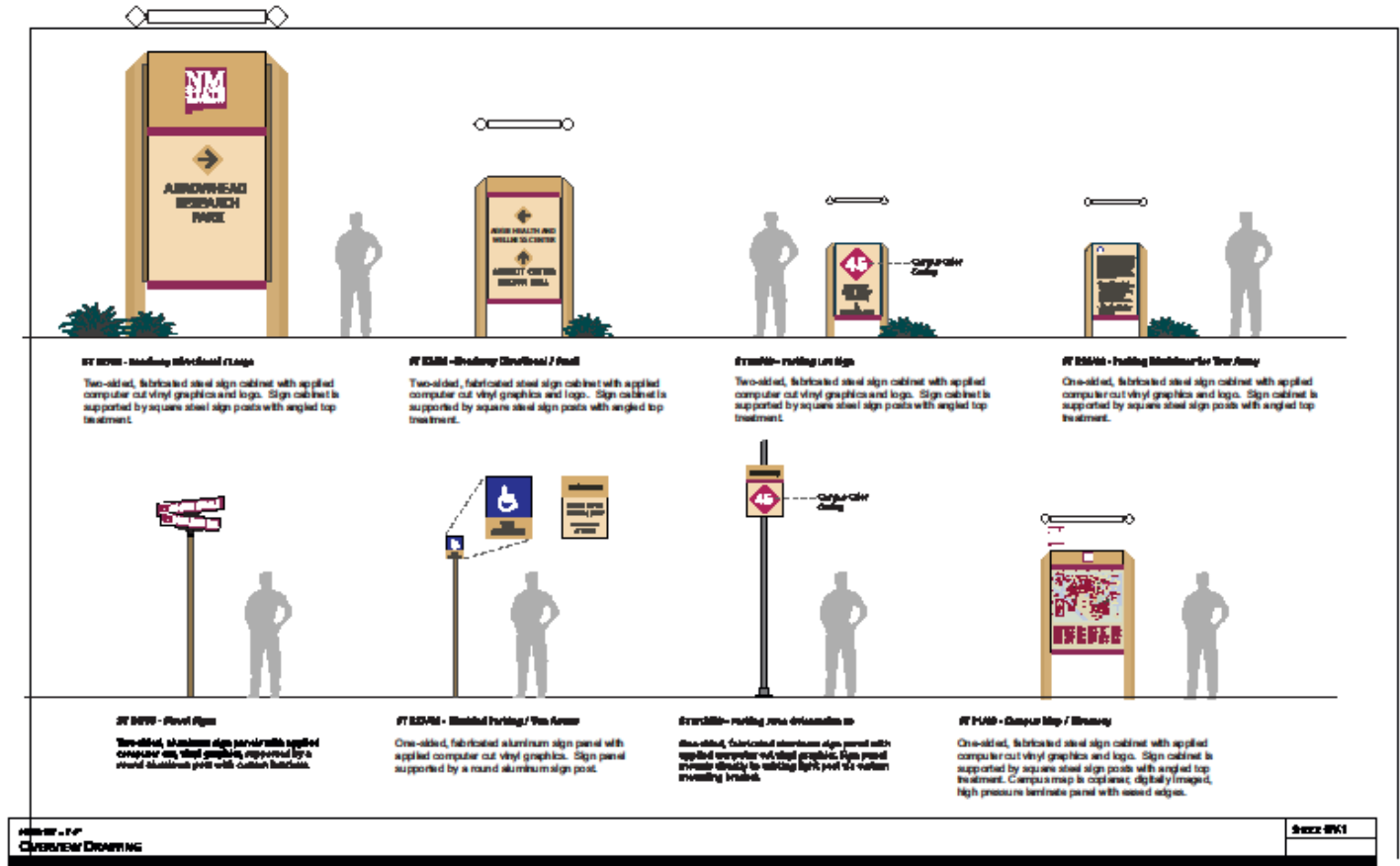
5.c. Information Item- Campus Wayfinding and Signage Policy

Updates to the Campus Wayfinding and Signage Policy to include:

- Current freestanding identification signs
- Signage dimensions, details and specifications
- Room signage color options
- Review and approval at next CPC meeting



Campus Wayfinding and Signage Policy



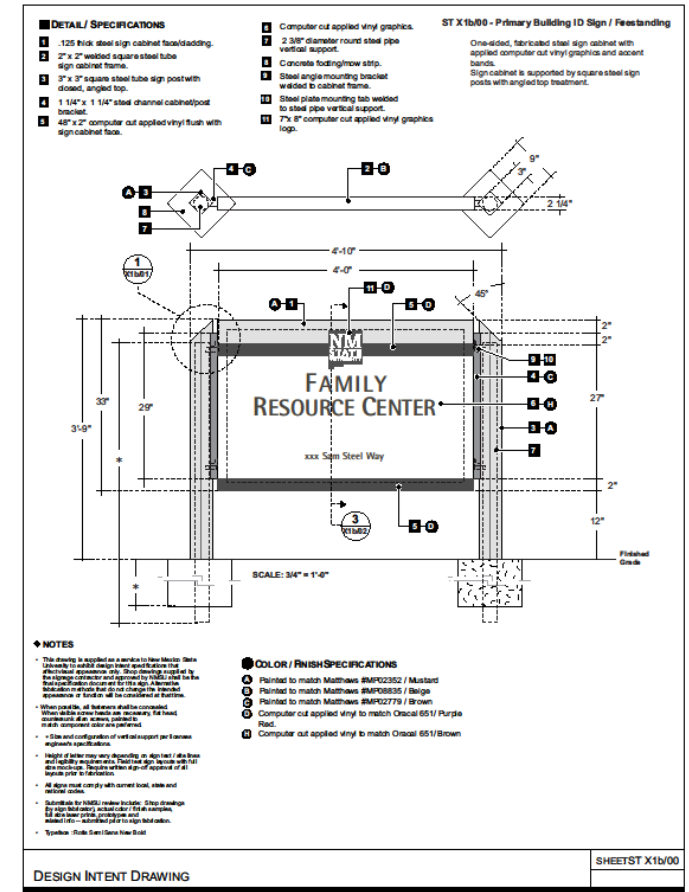
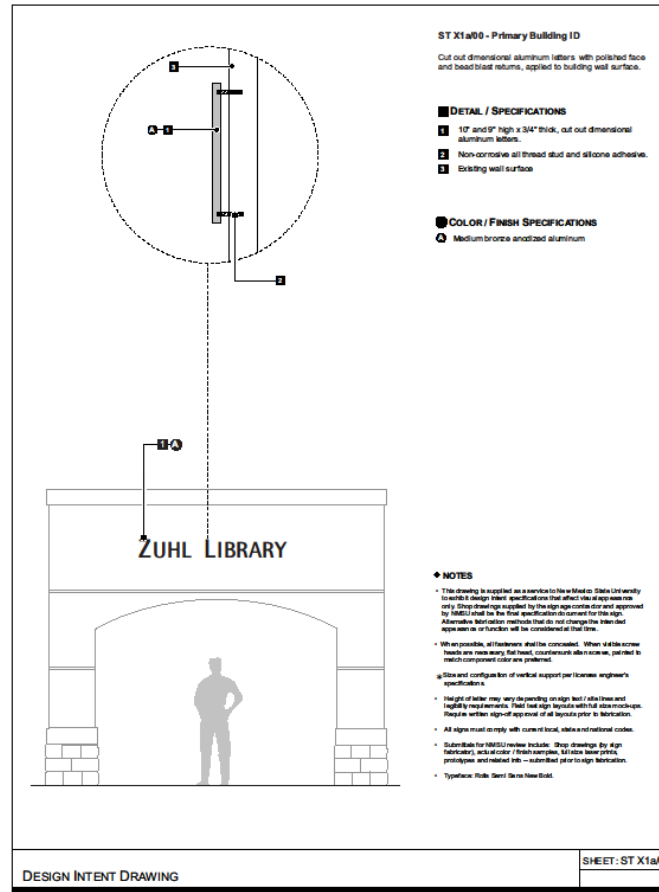
NMSU Campus Signage Policy, Page 1



Be Bold. Shape the Future.
New Mexico State University
nmsu.edu

Facilities and Services

Campus Wayfinding and Signage

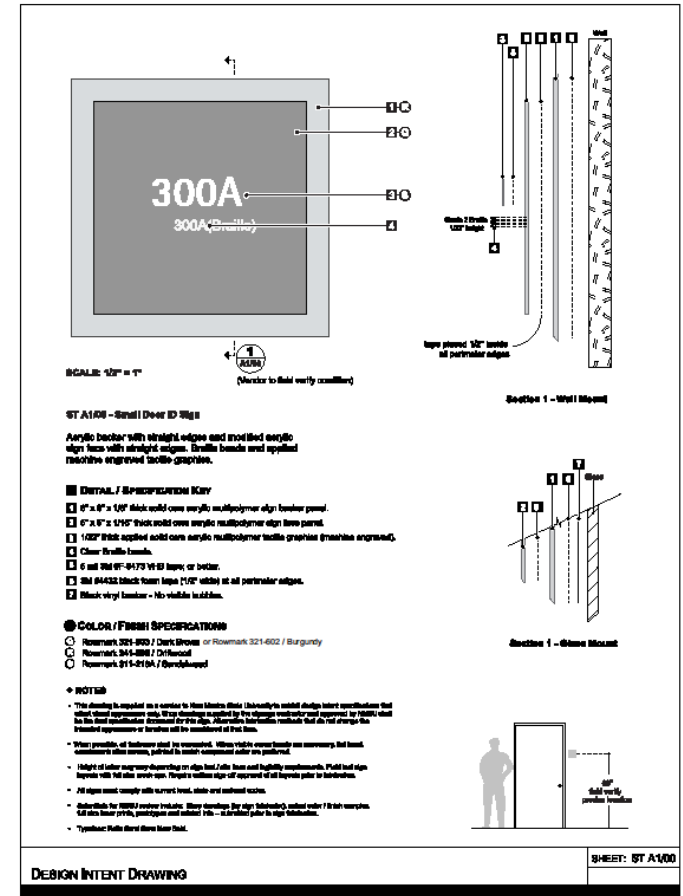
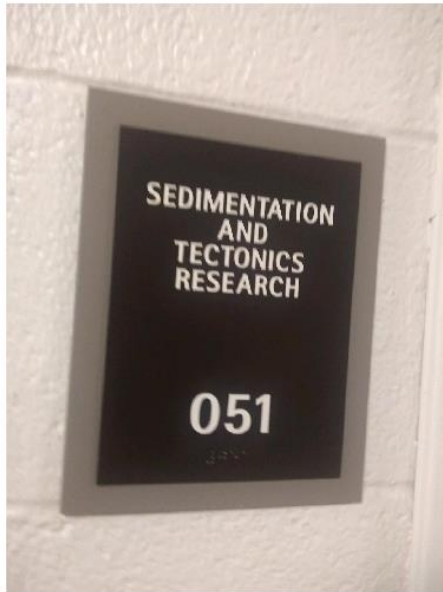


Be Bold. Shape the Future.
New Mexico State University
nmsu.edu

NMSU Campus Signage Policy, Page 30 & 31

Facilities and Services

Campus Wayfinding and Signage Policy



Be Bold. Shape the Future.
New Mexico State University
nmsu.edu

NMSU Campus Signage Policy, Page 38

Facilities and Services

5.d. Information Item- Story Tree

- Replacement of original site of storytellers tree at Heritage Farm
- Original tree planed during Fabian Garcia's time
- Heritage significance: Campus literary group founded in 1927 called the State College Story League gathered to read literature aloud underneath the tree branches
- Recommendation when the tree is at end of its life, plant a new tree the same species nearby

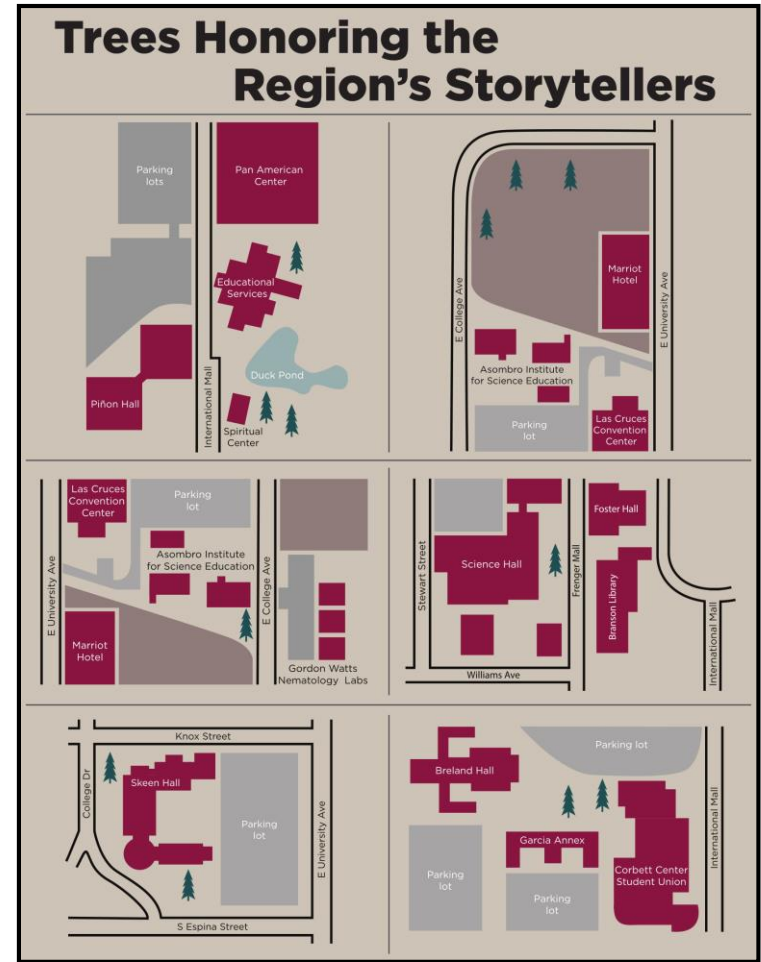


5.d. Information Item- Story Tree

- Donation of 12 Cedars of Lebanon trees by Randy and Cindy Farmer that were planted around campus
- Inspired by book “The Giving Tree”
- Replacement of original story tree
- Naming for two authors by donors:

Jennie George Curry (founder of Storytellers group in 1927) and Don Cutter professor horticulture and plant science

- Recommendations for naming the next two trees for great storytellers.
- Criteria yet to be determined



5.e. Information Item- Monumental Signage Update

Sign Locations:

- E. University & E. Union
- Stewart & E. Union
- E. Union and Sam Steel Way
- S. Triviz & Wells (Arrowhead Park)
- Wells & Arrowhead (Arrowhead Park)

SIGNAGE HIERARCHY & LOCATIONS



Monumental Signage Update

SIGNAGE FAMILY

Proposed Project Schedule:

- Start of Construction – September 2019
- Completion of Construction – Mid-November 2019



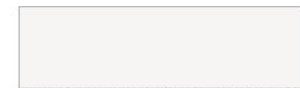
WEATHERED STEEL



NATURAL STONE VENEER



COATED METAL WITH VINYL



TRANSLUCENT POLYCARBONATE PANEL

SIGN TYPES & MATERIALS

New Mexico State University Monument Signage Master Plan | 14



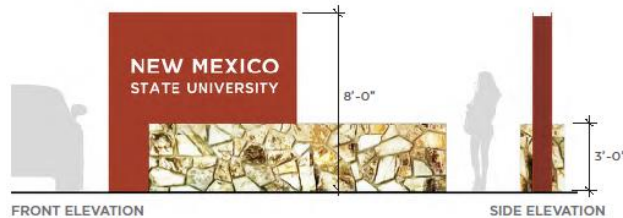
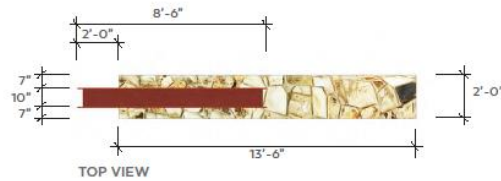
Be Bold. Shape the Future.
New Mexico State University
nmsu.edu

Facilities and Services

Monumental Signage Update

Primary signage:
(next phase)

SIGNAGE FAMILY



DESCRIPTION

This sign type serves to identify primary campus entrances. The sign may carry the identical message on both sides depending on location and orientation. The letters will be cut out of the steel sheet and backed with a UV-stable polycarbonate (Lexan) panel in a translucent off-white color. The sign will be internally illuminated by LED lights. Ground

lights may be used in addition to light up the stone wall.

TYPOGRAPHY

'New Mexico' - 8" cap height;
'State University' - 5-1/2" cap height; Gotham Bold, uppercase only.



WEATHERED STEEL



NATURAL STONE VENEER

● R1/01 PRIMARY MONUMENT SIGN

16

NMSU Monument Signage Master Plan | 17



Be Bold. Shape the Future.
New Mexico State University
nmsu.edu

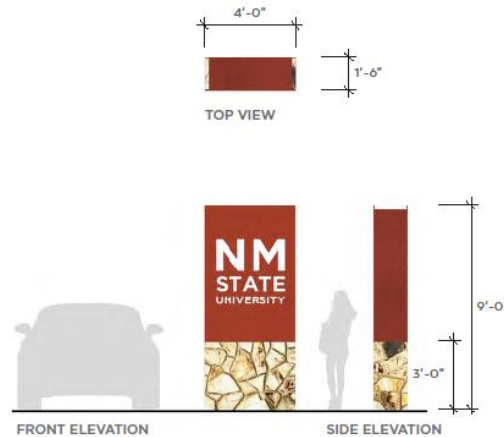
Facilities and Services

Monumental Signage Update

Secondary signage:

- E. University & E. Union
- Stewart & E. Union
- S. Triviz & Wells @ the north side of Wells Street

SIGNAGE FAMILY



DESCRIPTION

This sign type serves to identify secondary major campus entrances. The sign may carry the identical message on both sides depending on location and orientation. The letters will be cut out of the steel sheet and backed with a UV-stable polycarbonate (Lexan) panel in a translucent off-white color. The sign will be internally illuminated by LED lights.

TYPOGRAPHY

'NM' - 17" cap height; 'State' - 7-1/2" cap height; 'University' - 4" cap height; Gotham Bold, uppercase only.

● R1/O2 PRIMARY ARROWHEAD MONUMENT SIGN

18



WEATHERED STEEL



NATURAL STONE VENEER

NMSU Monument Signage Master Plan | 19



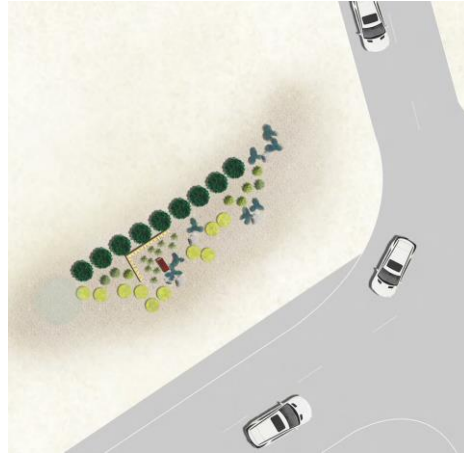
Be Bold. Shape the Future.
New Mexico State University
nmsu.edu

Facilities and Services

Monumental Signage Update

Secondary signage:

- S. Triviz & Wells Street showing NW corner (above) and SW corner (below) for Arrowhead Park

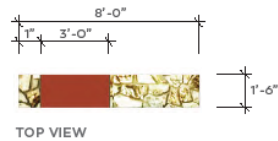


Monumental Signage Update

Tertiary signage:

- E. Union and Sam Steel Way

SIGNAGE FAMILY



DESCRIPTION

This sign type serves to identify tertiary campus entrances. The sign may be oriented to only show the message on one side, but also may be used as a double-sided sign. The letters will be cut out of the steel sheet and backed with a UV-stable polycarbonate (Lexan) panel in a translucent off-white color. The

text will be internally illuminated by LED lights.

TYPOGRAPHY

'NM' - 11-1/2" cap height; 'State' - 5-1/2" cap height; 'University' - 3" cap height; Gotham Bold, uppercase only.



WEATHERED STEEL



NATURAL STONE VENEER

● R1/03 TERTIARY MONUMENT SIGN

20

NMSU Monument Signage Master Plan | 21



Be Bold. Shape the Future.
New Mexico State University
nmsu.edu

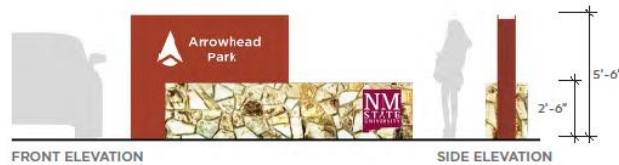
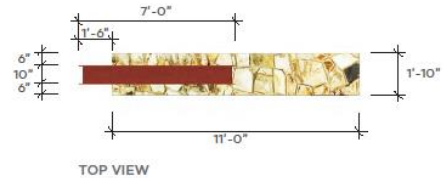
Facilities and Services

Monumental Signage Update

Primary signage: (Arrowhead Park)

- Wells & Arrowhead (Arrowhead Park)

SIGNAGE FAMILY



DESCRIPTION

This sign type serves to identify primary Arrowhead Park entrances. The sign may carry the identical message on both sides depending on location and orientation. The 'Arrowhead Park' text and logo will be cut out of the steel sheet and backed with a UV-stable polycarbonate (Lexan) panel in a translucent off-white color. They will be internally illuminated by LED lights. Ground

lights may also be used to light up the NMSU logo.

TYPOGRAPHY

'Arrowhead Park' - 5" cap; Gotham Medium, first letter uppercase followed by lowercase.

NMSU logo will follow University brand standards.

R1/01 A PRIMARY MONUMENT SIGN ARROWHEAD

22



WEATHERED STEEL



NATURAL STONE VENEER



COATED METAL WITH VINYL LETTERING

NMSU Monument Signage Master Plan | 23



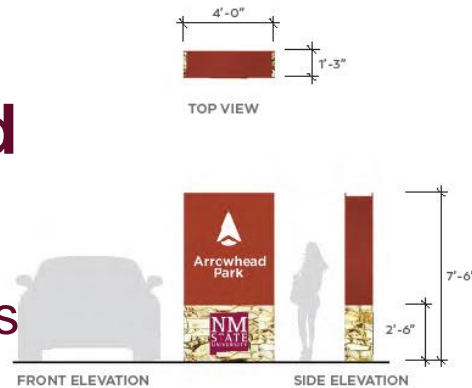
Be Bold. Shape the Future.
New Mexico State University
nmsu.edu

Facilities and Services

Monumental Signage Update

Secondary signage: (Arrowhead Park) S. Triviz & Wells @ the south side of Wells Street (Arrowhead Park)

SITE FAMILY



DESCRIPTION

This sign type serves to identify secondary Arrowhead Park entrances. The sign may carry the identical message on both sides depending on location and orientation. The 'Arrowhead Park' text and logo will be cut out of the steel sheet and backed with a UV-stable polycarbonate (Lexan) panel in a translucent off-white color. They will be

internally illuminated by LED lights. Ground lights may also be used to light up the NMSU logo.

TYPOGRAPHY

'Arrowhead Park' - 5" cap; Gotham Medium, first letter uppercase followed by lowercase.

NMSU logo will follow University brand standards.



WEATHERED STEEL



NATURAL STONE VENEER



COATED METAL WITH VINYL LETTERING

● R1/02 A SECONDARY MONUMENT SIGN ARROWHEAD

24

NMSU Monument Signage Master Plan | 25



Be Bold. Shape the Future.
New Mexico State University
nmsu.edu

Facilities and Services

6.a. Action Item- Baseball Training Facility

Project funding - \$855,000 (Donor Gift)

Proposed Scope of Work

This project includes:

- New covered batting cage open air structure for baseball training
- Covered batting cages with three designated hitting areas
- Two dual-use batting and pitching areas
- Pre-fabricated structure with a standing seam metal roof and exterior screen walls
- Site improvements at existing stadium and field per Athletics Facilities Master Plan



Baseball Training Facility

Existing Conditions



Existing baseball stadium and field



Be Bold. Shape the Future.
New Mexico State University
nmsu.edu

Facilities and Services

Baseball Training Facility

Existing Conditions



Existing batting cages

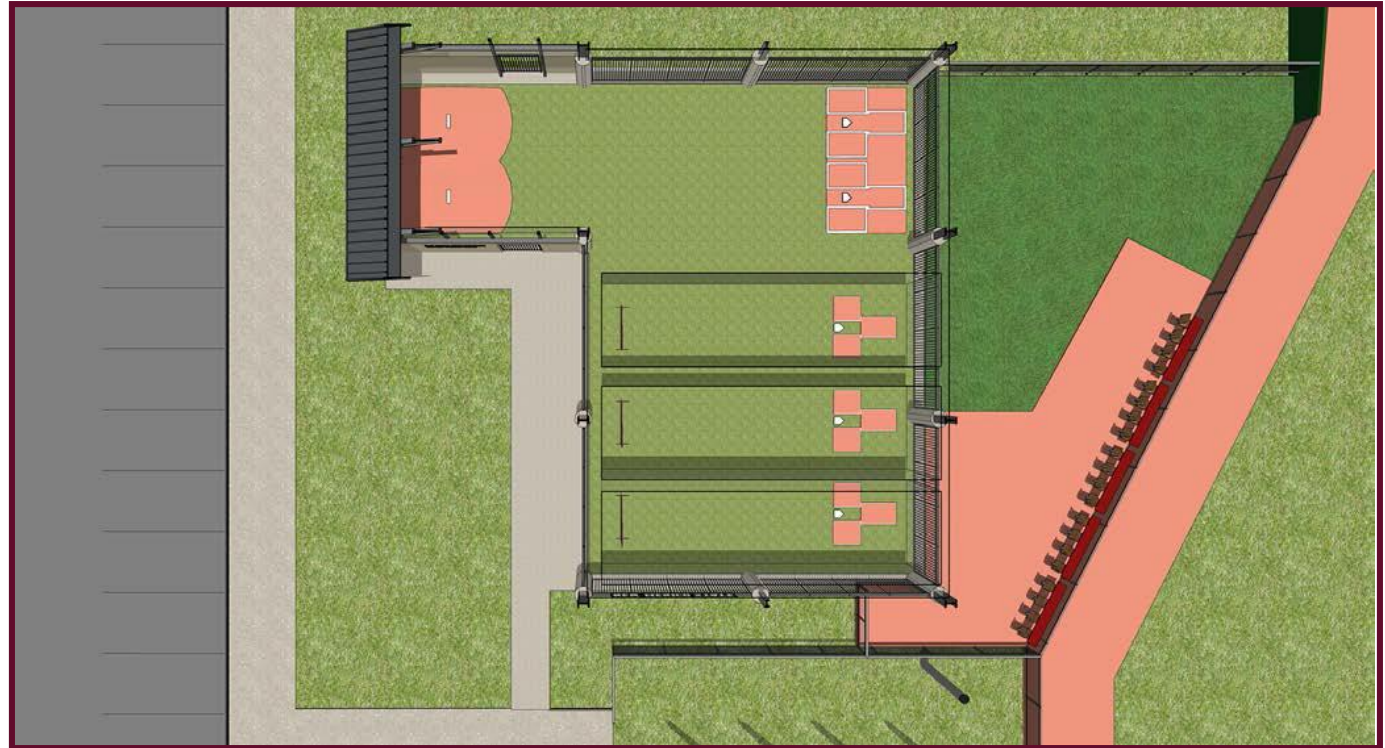


Be Bold. Shape the Future.
New Mexico State University
nmsu.edu

Facilities and Services

Baseball Training Facility

Proposed
Rendering



Proposed baseball training facility plan diagram



Be Bold. Shape the Future.
New Mexico State University
nmsu.edu

Facilities and Services

Baseball Training Facility

Proposed
Rendering



Proposed covered baseball training facility



Be Bold. Shape the Future.
New Mexico State University
nmsu.edu

Facilities and Services



7. Next Meeting: Wednesday, October 2, 2019, 3:30PM, FS LCR



Be Bold. Shape the Future.
New Mexico State University
nmsu.edu

Facilities and Services