

Campus Planning Committee

Wednesday, September 2, 2020 3:30 PM (Virtual Zoom Meeting)

1. Introductions
2. Membership Updates
3. Approval of the Minutes- September 4, 2019
4. Campus Planning Committee Charge
5. Information Items:
 - a. Capital Outlay- Five Year Facilities Plan for Las Cruces Campus
 - b. Updates to the Campus Master Plan 2017-2027 in process
6. Action Items:
 - a. I-25/University Avenue Interchange Landscape and Campus Entry
 - b. Ag Modernization and Educational Facilities Phase 1
 - c. NMDA Building Renovation and Addition
7. Next Meeting: Wednesday, October 7, 2020, 3:30PM, TBD

New Mexico State University



Heather Zack Watenpaugh
University Architect



Preserve the past. Planning and design for the future of facilities and the campus.



Be Bold. Shape the Future.
New Mexico State University
nmsu.edu

Facilities and Services

4. Campus Planning Committee Charge:

- Established by the President as an advisory group
- Review impact of visual, physical appearance of the campus
- NMSU's heritage preservation (historic preservation) committee
- Wayfinding/Signage policy
- CPC review projects within the triangle of I-25/I-10 and University Avenue, including ADI and Arrowhead
- Recommendations to the President for final approval



5.a. Capital Outlay- Five Year Facilities Plan (2021-2022 STB)

Five Year Facilities Plan Las Cruces.Final Campus

(8/17/2020)

2021-2022 (Severance Tax Bond Year)

Repair tunnel A sections	\$	3,000,000
Ag Science Center improvements per assessments	\$	3,000,000
Data Center Infrastructure Upgrades	\$	1,516,000
Selective demolition per space plan (Greek Complex)	\$	1,500,000

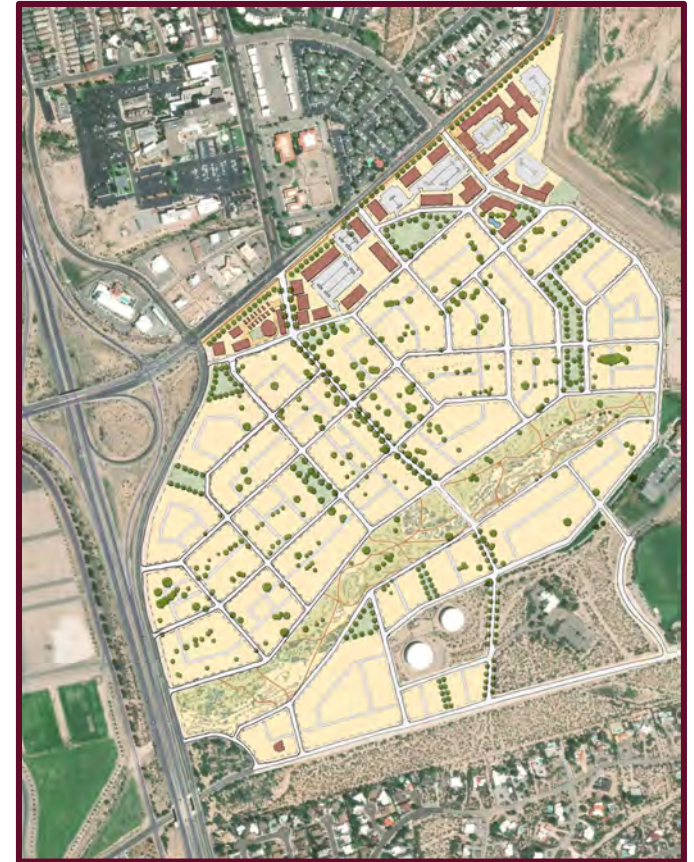


Be Bold. Shape the Future.
New Mexico State University
nmsu.edu

Facilities and Services

5.b. Updates to the Campus Master Plan 2017-2027 in process

- Campus MP finalized 5/11/2018
- The draft update information and feedback available on-line, <https://www.nmsucampusupdate.com/>
 - ❖ District 6 - Arrowhead Park
 - ❖ District 11 – East Campus/ Aggie Uptown



6.a. Action Item- Las Cruces: I-25/University Ave. Interchange

Project Scope:

- Landscaping within the NMSU new entry corridor
- Monumental signage at the new roundabout

Proposed Project Schedule:

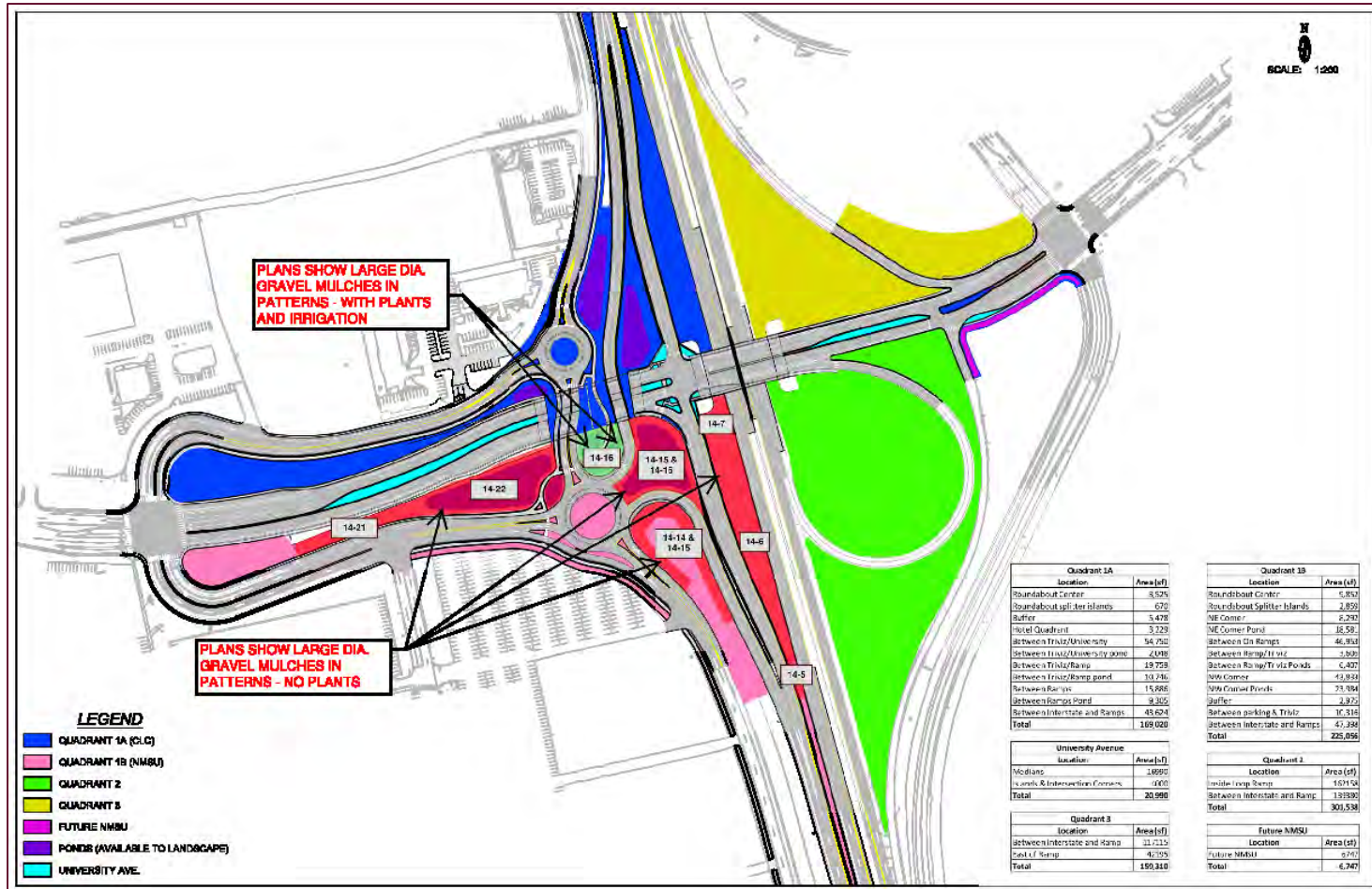
- Completion of Design – August 2020
- Start of Construction – September 2021*
- Completion of Construction – January 2022

*Start date pending completion of NMDOT I-25/University Ave. Project



Landscaping Site Diagram

Quadrant 1B
(NMSU):
“Pink” Area is
Southwest
Quadrant for
Landscaping



Be Bold. Shape the Future.
New Mexico State University
nmsu.edu

Facilities and Services

Las Cruces: I-25/University Ave. Interchange

Project Funding: \$1,115,050

- Funding from sale of land (portion of existing Parking Lot #30), Board of Regents Meeting, October 3, 2018 – \$465,050
- 2019 Building Repair and Renewal – \$325,000 – Capital Improvements
- 2020 Building Repair and Renewal – \$325,000 – Capital Improvements

Project Requirements:

- NMDOT Gateway Monument for Roundabout Signage
- Sight Distance Evaluation with engineers for compliance with FHWA Roundabouts Guidelines
- NMDOT Right of Way Use Agreement for approved roundabout signage

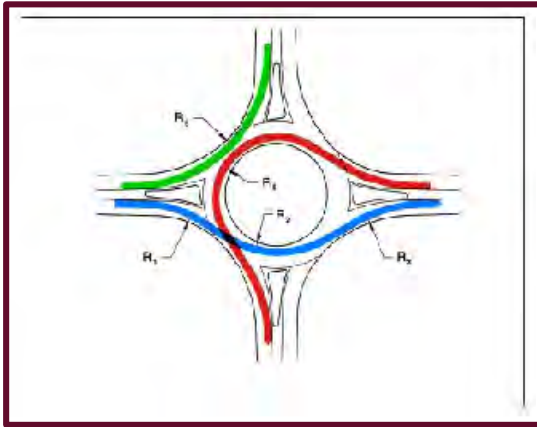
Concept Feedback: <https://www.surveymonkey.com/r/nmsu-entry-monument>



Be Bold. Shape the Future.
New Mexico State University
nmsu.edu

Facilities and Services

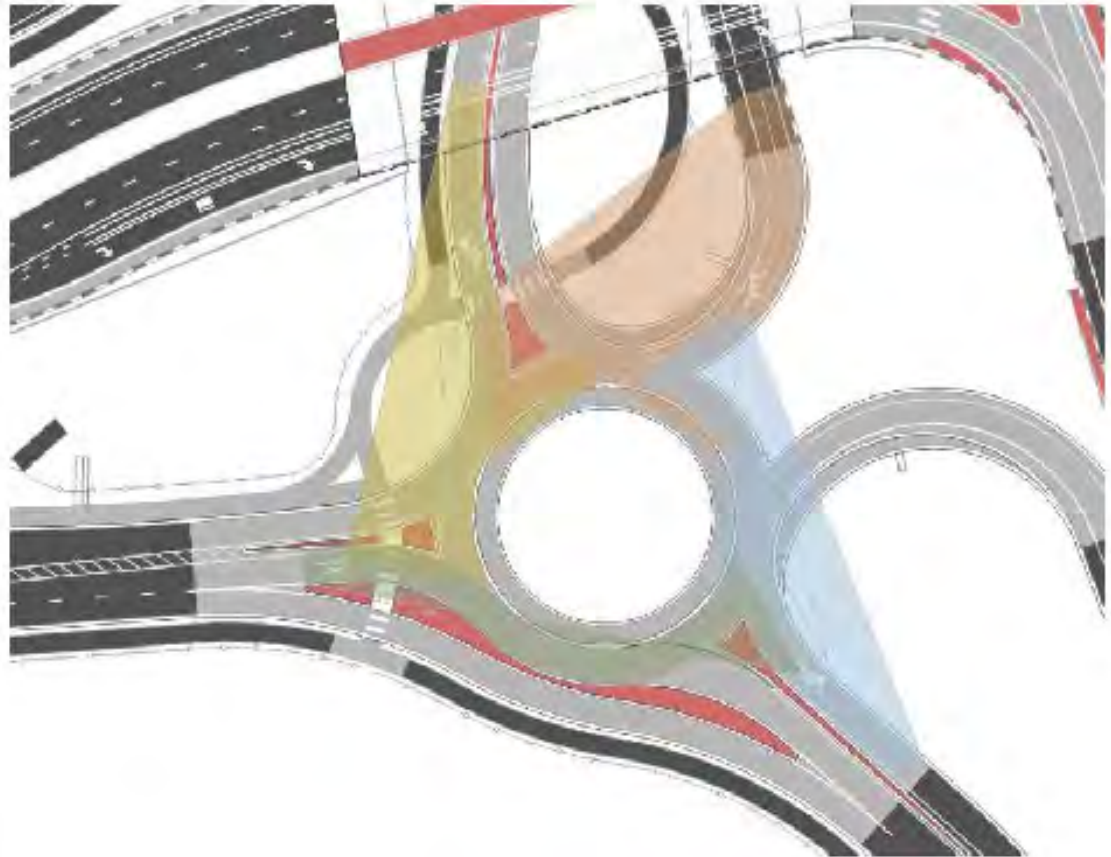
Roundabout Diagrams



Roundabout Study:

- Vehicular Path
- Monumental signage sight distance evaluation showing area for vertical monument at roundabout

The following Exhibit illustrates that vertical monuments can be placed anywhere within the roundabout median.



Be Bold. Shape the Future.
New Mexico State University
nmsu.edu

Facilities and Services

NMDOT ROW Use Agreement

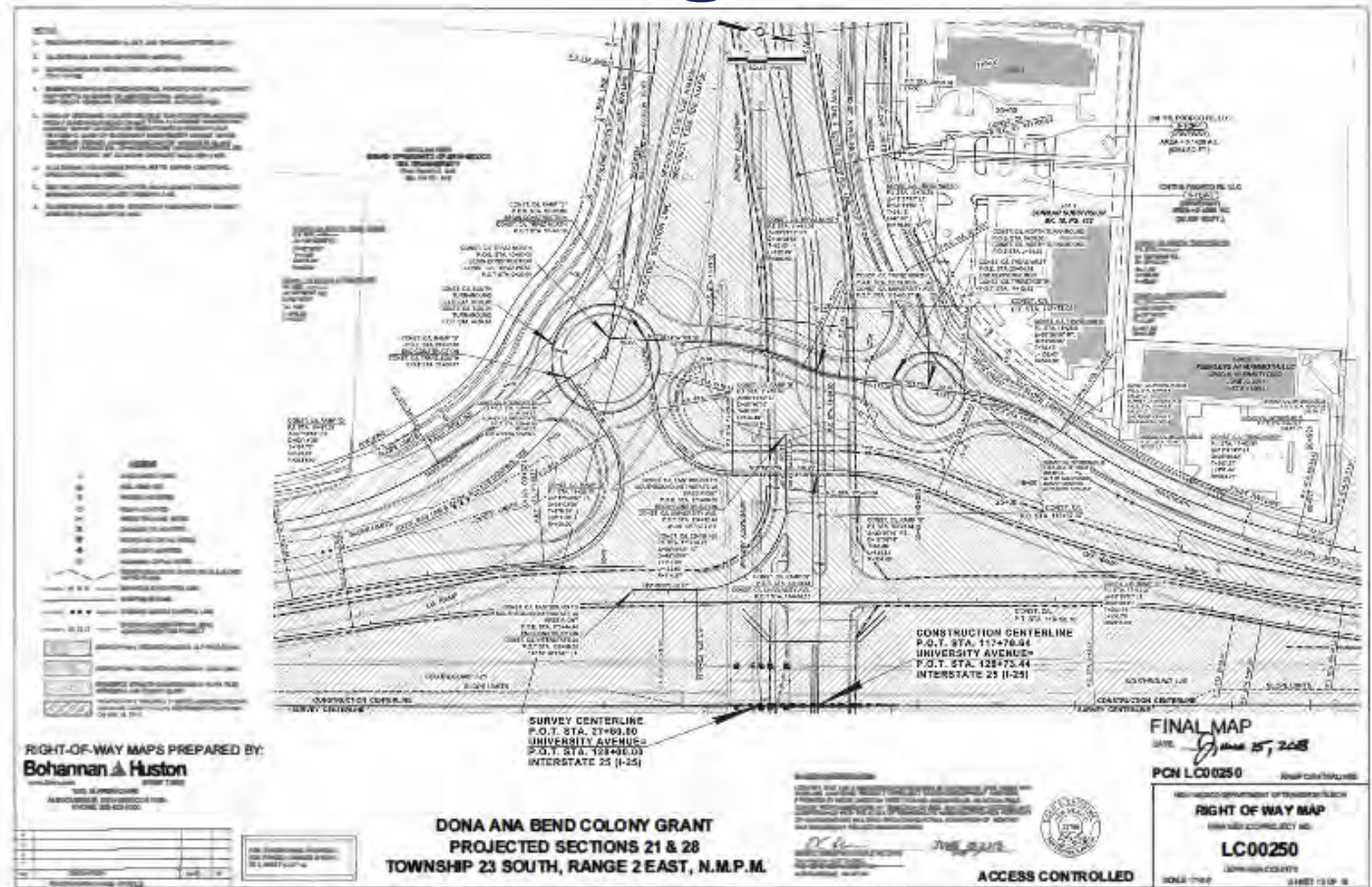


Exhibit B: Right of Way Map

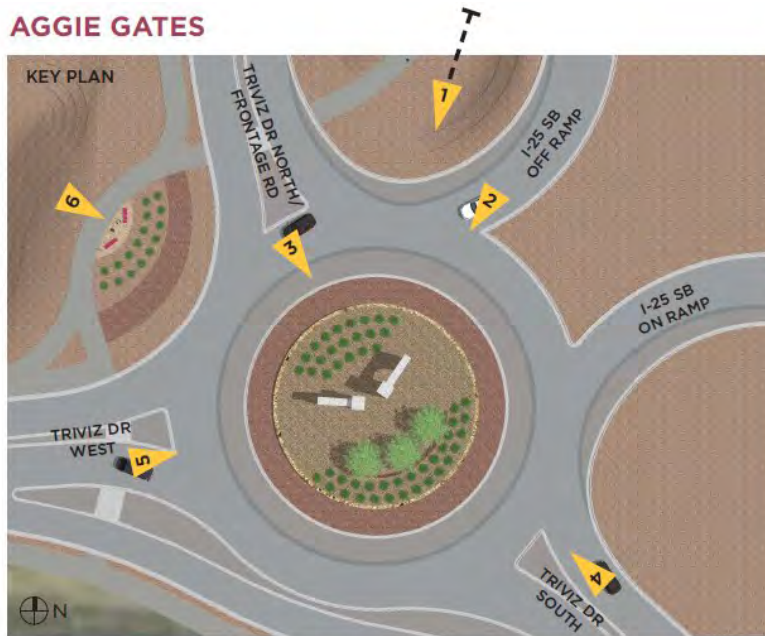


Be Bold. Shape the Future.
New Mexico State University
nmsu.edu

Facilities and Services

Concept Rendering – Aggie Gates

AGGIE GATES



The Aggie Gates concept establish a connection to the original entry gates to The Horseshoe, with a modern interpretation of that historic entryway at the east end of campus. A circular retaining wall raises the overall height at the center of the roundabout, setting a dramatic stage for the gates. The gates are angled toward one another, focusing views and creating a welcoming impression for drivers exiting the interstate. The orientation of the gates and the location of the NMSU brand on both sides of each gate ensures drivers have a direct view of the gates and the brand, from each entrance to the roundabout. A weathered steel accent panel opposite the gates provides balance, reinforces a material from other monument signs on campus, and creates an attractive backdrop for landscape plantings. Multi-stem trees behind the wall add some additional height, color and texture.

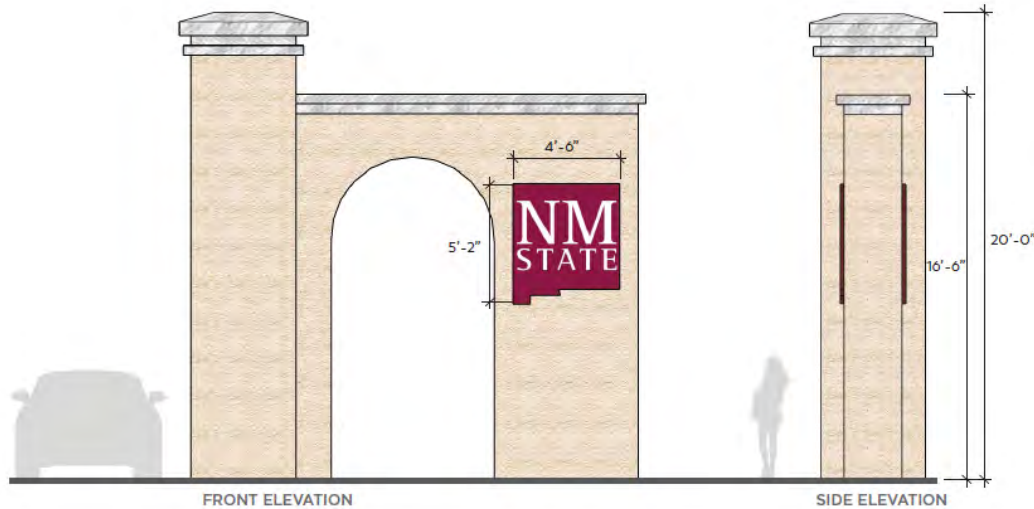
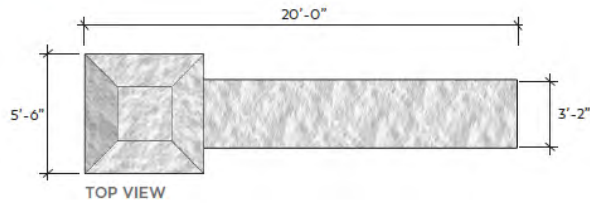


Be Bold. Shape the Future.
New Mexico State University
nmsu.edu

Facilities and Services

Concept Rendering – Aggie Gates

AGGIE GATES



DESCRIPTION

This monument sign is scaled to comply with NMDOT standards and to create a strong impression at an important campus gateway. The monument walls will be stuccoed a cream color to match buildings throughout campus. A classic cut stone cap provides minimal contrast allowing the focus to remain on the NMSU brand. Shielded ground lights will be used to wash light on the gates and NMSU logo, as well as decorate the weathered steel wall. All lighting will be night sky compliant.

TYPOGRAPHY

The NMSU logo will follow University brand standards.



COATED METAL WITH VINYL LETTERING



CREAM STUCCO



CUT STONE

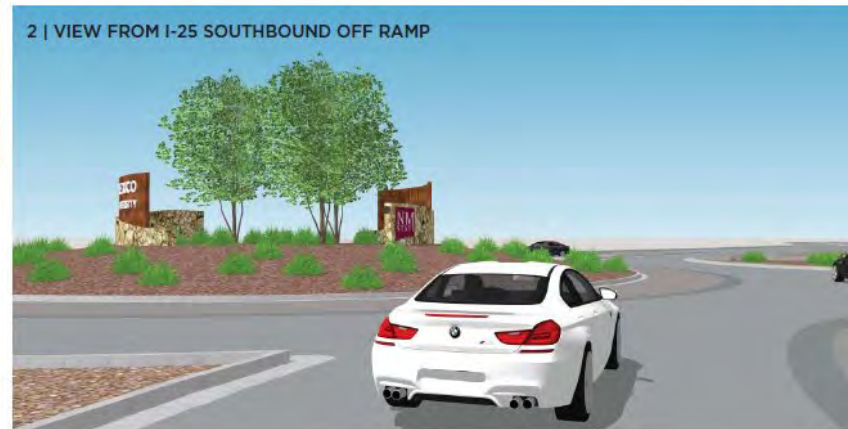
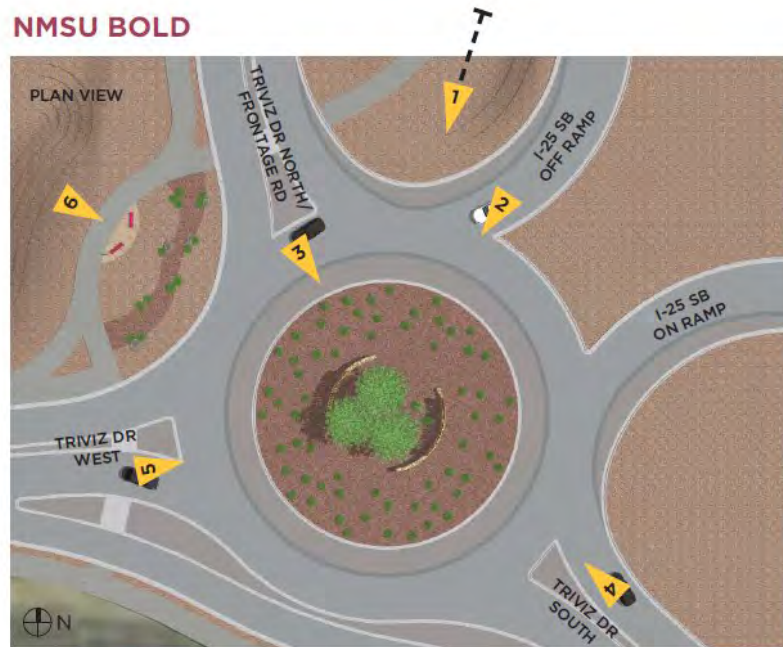


Be Bold. Shape the Future.
New Mexico State University
nmsu.edu

Facilities and Services

Concept Rendering – NMSU Bold

NMSU BOLD



The NMSU Bold concept uses materials and forms that reflect the style laid out in the NMSU Monument Signage Master Plan including natural stone veneer and weathered steel. The form of the monuments have been modified from the strict rectilinear forms of the Master Plan to make them boldly distinct and to better reflect the context of the roundabout. The swooping curves of the walls and the steel fins within the sign both evoke movement, pulling visitors in towards campus. A central cluster of trees provide a colorful and textured backdrop, with low shrubs adding additional color to the foreground. The whole scene is raised up on a bermed hill in the center of the roundabout.

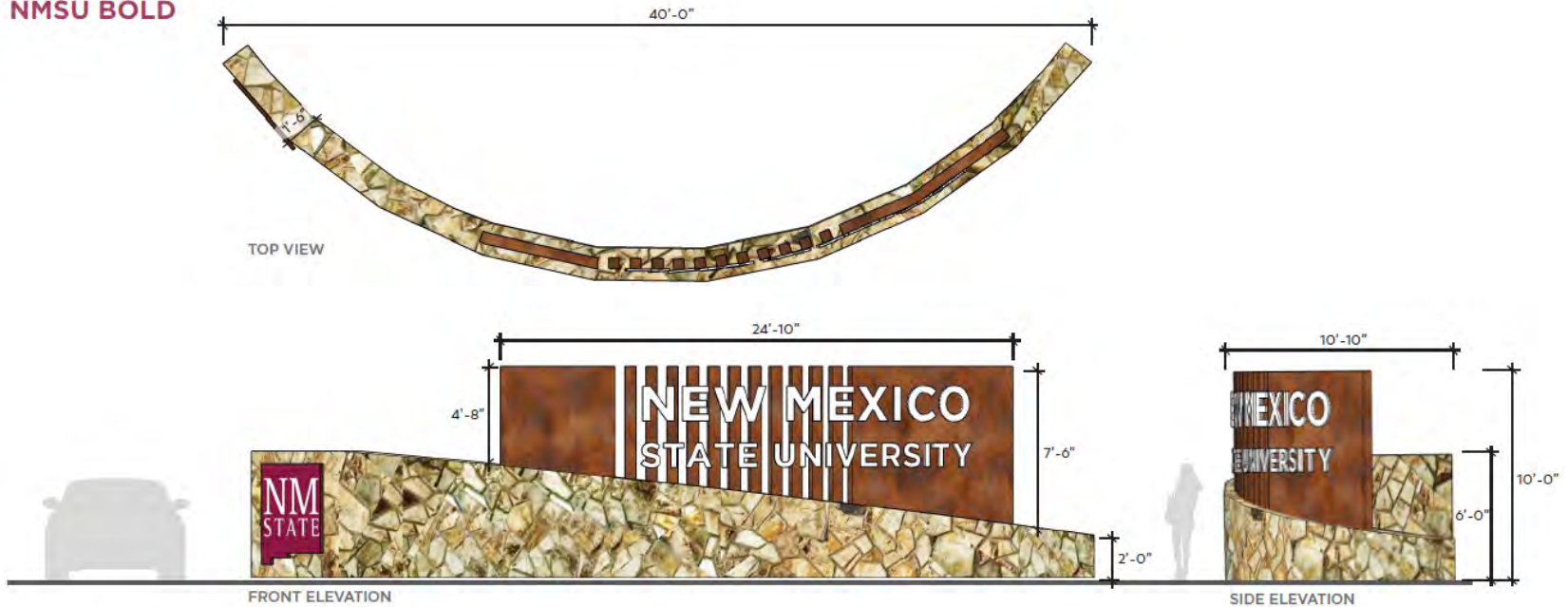


Be Bold. Shape the Future.
New Mexico State University
nmsu.edu

Facilities and Services

Concept Rendering – NMSU Bold

NMSU BOLD



DESCRIPTION

The swooping curved wall of the sign is covered with a natural stone veneer and features a weathered steel panel rising out of it. The panel is broken into fins making a dynamic backdrop to the university name. The aluminum letters will be powdercoated white. Shielded ground lights will be used to wash the monument signs and will be night sky compliant.

TYPOGRAPHY

'NM' - 20" cap height
 'State' - 10" cap height
 Gotham Bold, uppercase only

The NMSU logo will follow University brand standards.



WEATHERED STEEL



NATURAL STONE VENEER



COATED METAL WITH VINYL LETTERING



WHITE POWDERCOATED ALUMINUM LETTERS



Be Bold. Shape the Future.
 New Mexico State University
 nmsu.edu

Facilities and Services

Concept Rendering – Combined

NMSU BOLD & AGGIE GATES

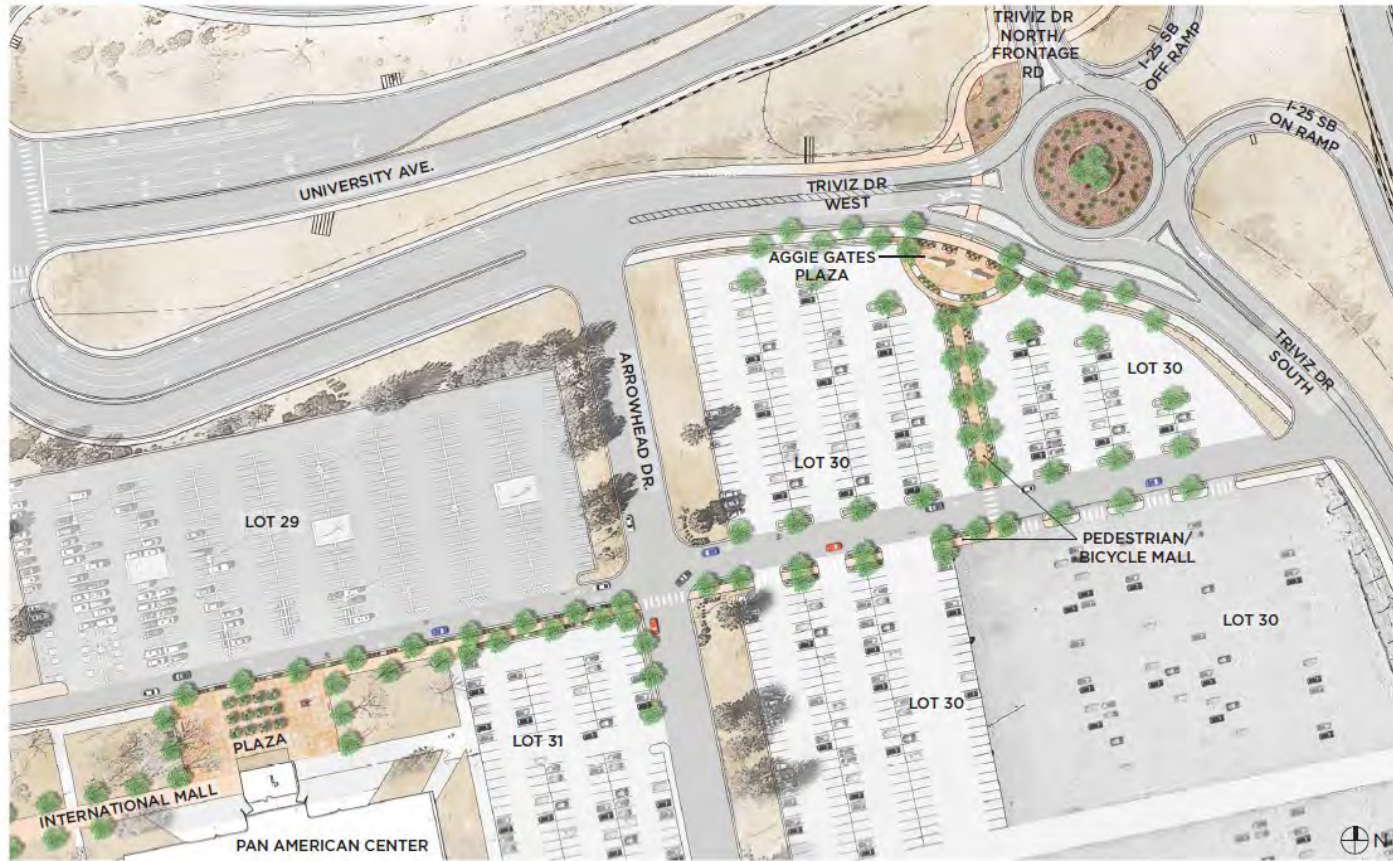


Be Bold. Shape the Future.
New Mexico State University
nmsu.edu

Facilities and Services

Concept Rendering – Combined

NMSU BOLD & AGGIE GATES



Be Bold. Shape the Future.
New Mexico State University
nmsu.edu

Facilities and Services

6.a. Monumental Signage Update

SIGNAGE HIERARCHY & LOCATIONS

Sign Locations:

- E. University & E. Union
- Stewart & E. Union
- E. Union and Sam Steel Way
- S. Triviz & Wells (Arrowhead Park)
- Wells & Arrowhead (Arrowhead Park)



Monumental Signage Update

SIGNAGE FAMILY

Phase 1 Project Schedule:

- Construction Complete – December 2019



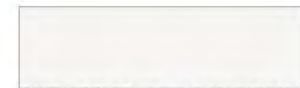
WEATHERED STEEL



NATURAL STONE VENEER



COATED METAL WITH VINYL



TRANSLUCENT POLYCARBONATE PANEL

SIGN TYPES & MATERIALS

New Mexico State University Monument Signage Master Plan | 14



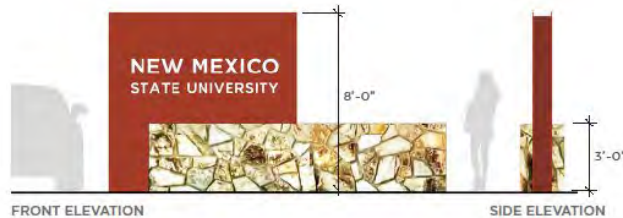
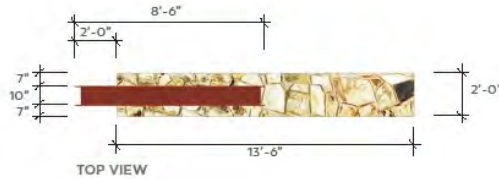
Be Bold. Shape the Future.
New Mexico State University
nmsu.edu

Facilities and Services

Monumental Signage Update

Primary signage:
(next phase)

SIGNAGE FAMILY



DESCRIPTION

This sign type serves to identify primary campus entrances. The sign may carry the identical message on both sides depending on location and orientation. The letters will be cut out of the steel sheet and backed with a UV-stable polycarbonate (Lexan) panel in a translucent off-white color. The sign will be internally illuminated by LED lights. Ground

lights may be used in addition to light up the stone wall.

TYPOGRAPHY

'New Mexico' - 8" cap height;
'State University' - 5-1/2" cap height; Gotham Bold, uppercase only.



WEATHERED STEEL



NATURAL STONE VENEER

● R1/01 PRIMARY MONUMENT SIGN

16

NMSU Monument Signage Master Plan | 17



Be Bold. Shape the Future.
New Mexico State University
nmsu.edu

Facilities and Services

6.b. Action Item- Ag Modernization and Educational Facilities

Project funding - \$24,800,000

Proposed scope of work for this Phase 1 project includes:

- Design and construction for the Ag District
- Demolition of 5 buildings (total 13,371 GSF)
- Construction of 3 buildings (total 40,489 GSF; net gain 27,118 GSF)
 - ❖ Food Science Learning and Safety Center (24,366 GSF)
 - ❖ Feed Milling and Processing/Maintenance Facility (7,093 GSF)
 - ❖ Biomedical Research Building- Phase 1 (9,030 GSF)
- New and reconfigured animal pens
- Sitework and drainage for Agriculture District 8



Agricultural Modernization and Educational Facilities – Phase 1

Project Funding: \$24,800,000

- 2018 General Obligation Bond – \$24,800,000

Proposed Project Schedule:

- Completion of Design – December 2020
- Start of Construction – January 2021
- Completion of Construction – May 2022



Ag Modernization – Phase 1



DEMOLITION - PHASE I

LEGEND

Repurposed Buildings

- R1 Cattle Barn (Repurpose to Sheep Barn)
- R2 Sheep Barn (Repurpose to Shearing/Lambing Barn)
- R3 Bull Pens (Repurpose to Husbandry Barn)

Animal Units & Misc.

- A Sheep Unit
- B Livestock Unit
- C Bull Pens
- D Open Field
- E Maintenance Unit
- F West Sheep Unit
- G West Pond - Drainage

Demolition

- D1 Small Animal Lab (Secretary)
- D2 Judging Barn
- D3 Maintenance Storage
- D4 West Sheep Building
- D5 West Sheep Office
- D6 Sheep Shearing & Lambing Barn
- D7 Maintenance Shop



Demolition – Phase 1 (from AEF MP II document)



Ag Modernization– Phase 1



Phase I FY2018 Funding
Priority #1
Development Plan

LEGEND

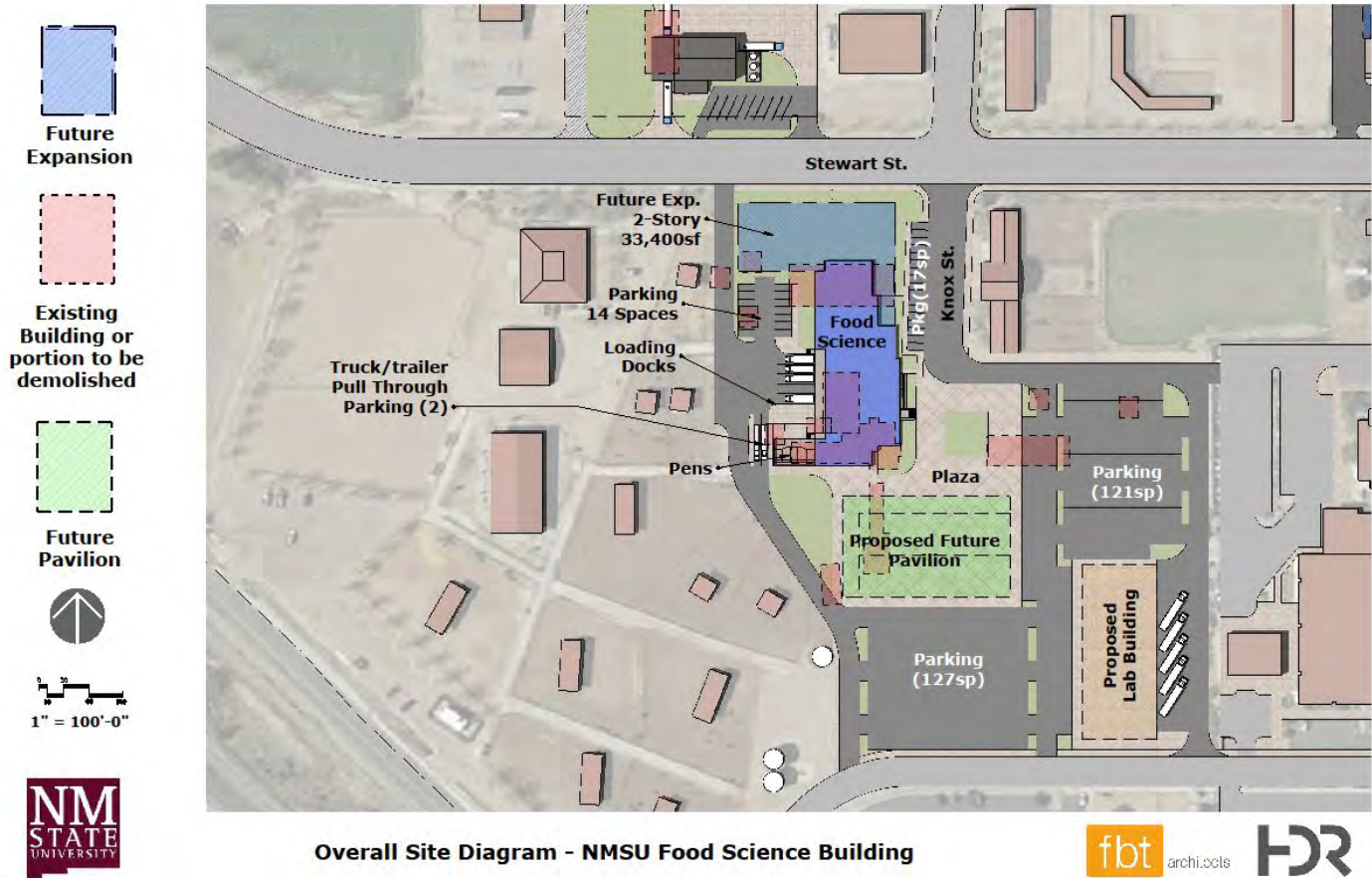
- 1 Food Science Learning & Safety Facility
- 2 Feed Milling & Processing Facility
- 3 Maintenance & Implement Storage
- 4 Biomedical Research Building - Phase 1



Site Plan – Phase 1 (from AEF MP II document)



Ag Modernization – Phase 1



Site Plan - Food Science Learning and Safety



Be Bold. Shape the Future.
New Mexico State University
nmsu.edu

Facilities and Services

Ag Modernization – Phase 1

Food Science Learning and Safety Ctr.

Building Information

This project includes building a Meat Lab and a small Pilot Plant Laboratory space to:

- Train College of ACES students in food and animal science curriculum
- Serve as a partnership between ACES and private food production industries
- Create state-of-the-art research capabilities for Abattoir, Meat Lab, Classroom, Refrigeration Space
- Provide general purpose Wet Lab space and a flexible “White Box” public-private partnership Pilot Plant to serve ACES entrepreneurship goals of providing students practical experience
- U.S. Department of Agriculture (USDA) office, staff support space, food quality loading dock and facility support spaces
- Retail space and retail loading dock space



Ag Modernization – Phase 1



RENDERING FROM KNOX
FOOD SCIENCE
NMSU AG MOD
COLOR ELEVATION STUDY - SEPTEMBER 2, 2020Z



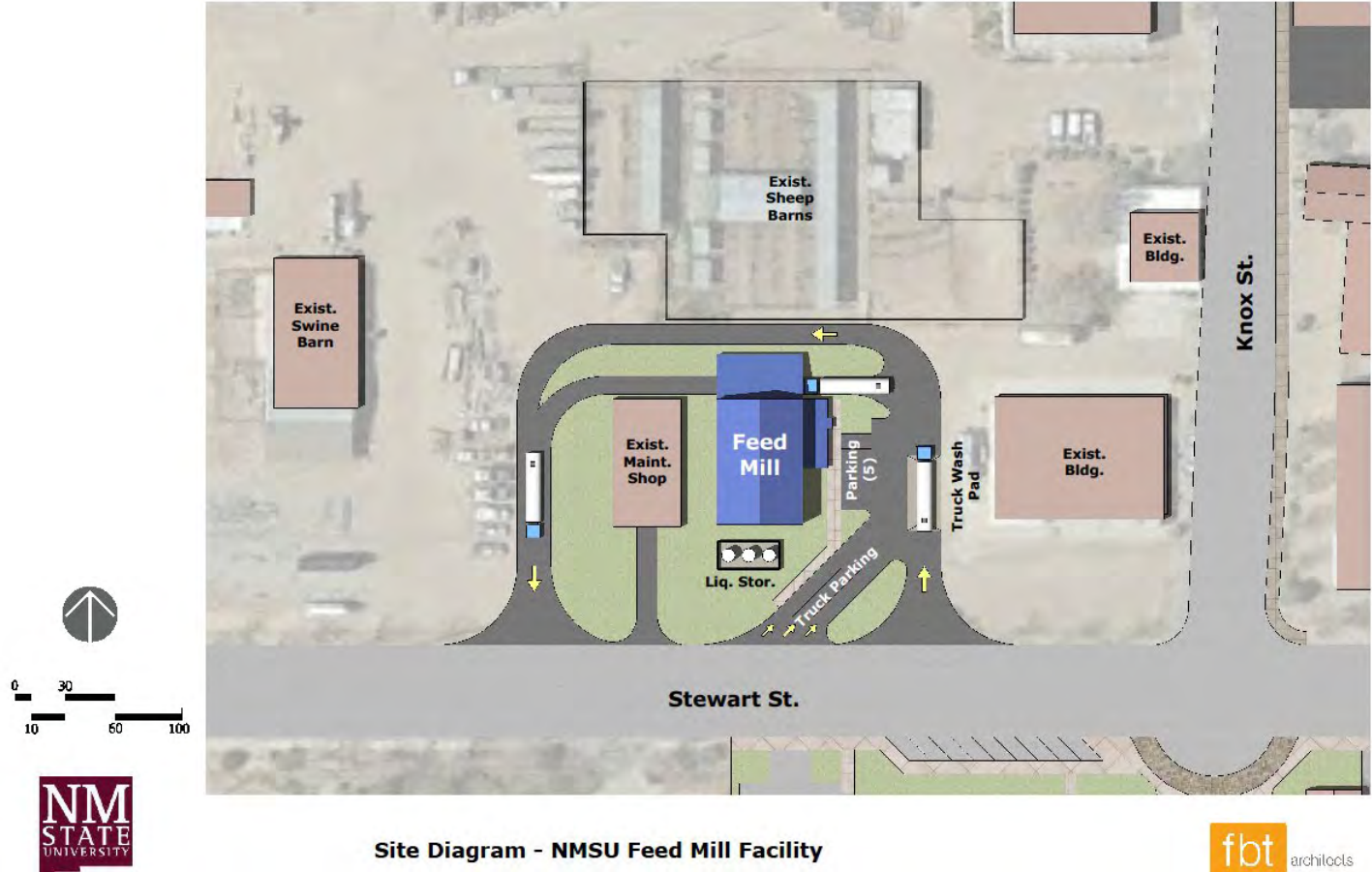
Rendering of Food Science Learning and Safety



Be Bold. Shape the Future.
New Mexico State University
nmsu.edu

Facilities and Services

Ag Modernization – Phase 1



Site Diagram - NMSU Feed Mill Facility



Site Plan – Feed Mill and Processing Facility



Ag Modernization – Phase 1

Feed Mill and Processing

Building Information

This project includes building a Feed Mill facility with:

- The primary mission to feed animals housed on-site with standard or research feed mixtures
- The benefit of serving as a partnership and service provider for commercial sales
- Training for College of ACES students in the operation of equipment within the feed mill system and prepare them for opportunities in the industry
- An adjoining management office for the building and site security
- The opportunity to provide a complete feed mill production and delivery site for local and commercial use



Ag Modernization – Phase 1



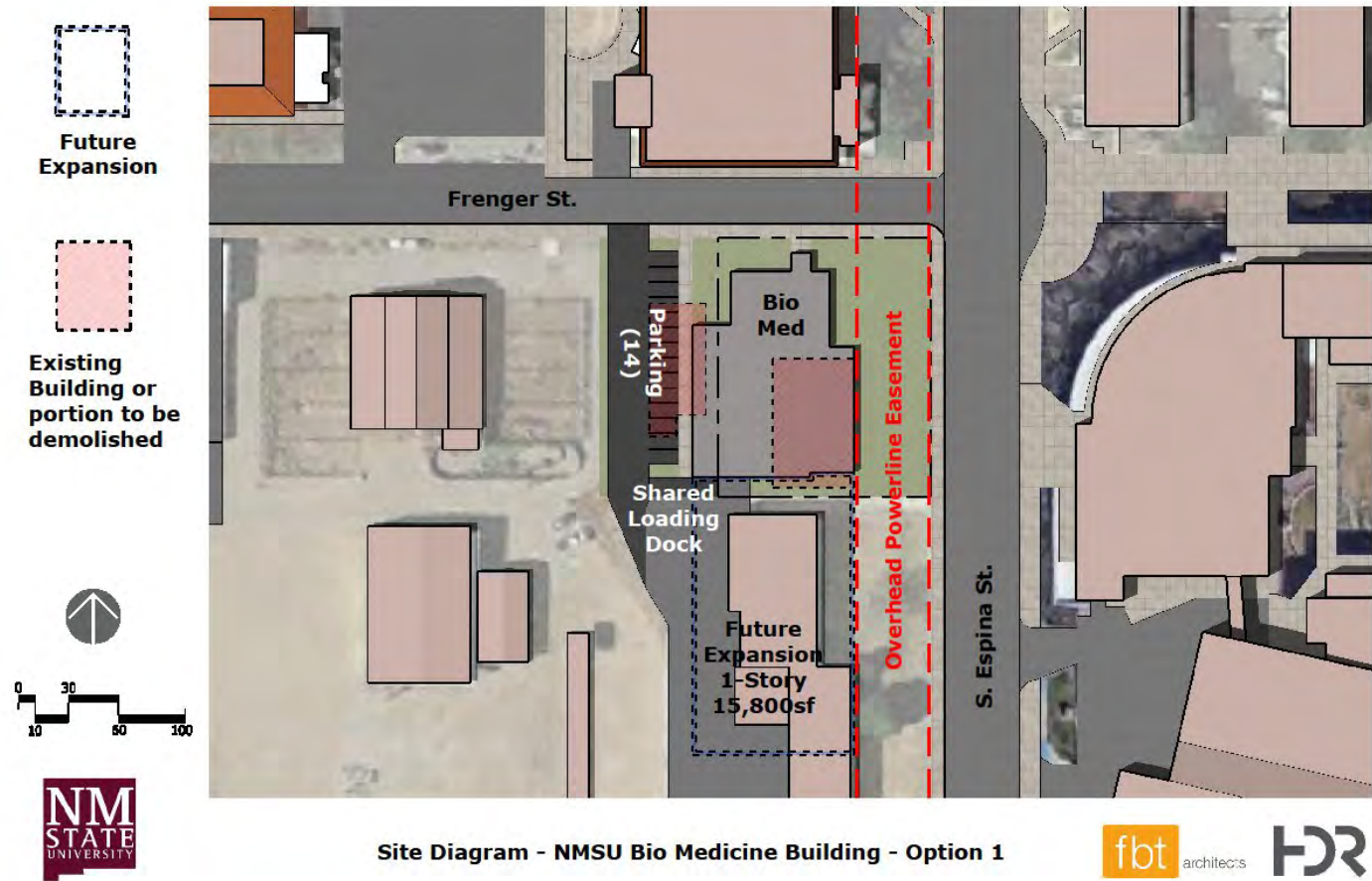
Rendering of Feed Mill and Processing Facility



Be Bold. Shape the Future.
New Mexico State University
nmsu.edu

Facilities and Services

Ag Modernization – Phase 1



Site Plan – Biomedical Research Building



Be Bold. Shape the Future.
New Mexico State University
nmsu.edu

Facilities and Services

Ag Modernization – Phase 1

Biomedical Research Building – Phase 1

Building Information

This project is a research building that will:

- Bridge several colleges and departments at NMSU and with partnership institutions
- Support science discovery, testing, clinical trials for cancer and agriculture research
- Provide state-of-the-art research capabilities including conventional animal housing wild rodent housing, surgery suite, behavioral spaces, procedure rooms, support labs, insectary, cage processing and other vivarium support space
- Elevate animal health status



Ag Modernization – Phase 1



RENDERING FROM ESPINA
BIOMEDICAL
NMSU AG MOD
COLOR ELEVATION STUDY - SEPTEMBER 2, 2020



Rendering of Biomedical Research Building



Be Bold. Shape the Future.
New Mexico State University
nmsu.edu

Facilities and Services

6.c. Action Item- NMDA Building Renovation and Addition

Project funding - \$16,550,000

Proposed scope of work for this project includes:

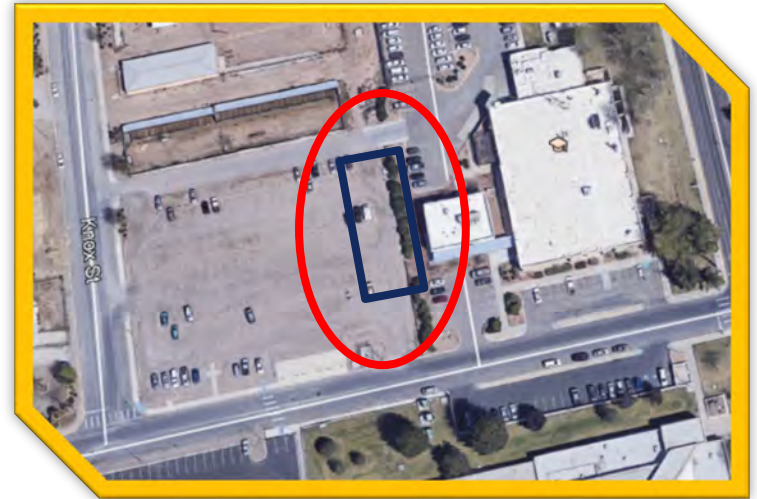
- Design and construction for NMDA complex
- New construction for Lab building (#663)
- Repurpose 2011 NMDA Addition building (#643) for State Chemist's Lab
- Minor renovation of original building (#330)
- Address settlement and foundation issues (#330)
- Provide new service entry and courtyard at new lab building for the NMDA complex



NMDA Building Renovation and Addition

Building Information:

- New Lab Building is 14,999 GSF
- Separation of petroleum and chemistry labs
- Removal of laboratories from main building
- Metrology, Petroleum and Seed Labs in building, along with central receiving and lab administrative offices
- Requirements for lab equipment, life safety, code compliance and accreditation



NMDA Lab Building 663



Be Bold. Shape the Future.
New Mexico State University
nmsu.edu

Facilities and Services

NMDA Building Renovation and Addition

Project Funding: \$16,550,000

- 2019 NMDA Departmental Funds – \$550,000
- 2019 General Funds – \$3,000,000
- 2020 General Funds – \$11,000,000
- 2021 Severance Tax Bond – \$2,000,000

Proposed Project Schedule:

- Completion of Design – October 2020
- Start of Construction – January 2021
- Completion of Construction – August 2022



NMDA Building Renovation and Addition



Rendering of proposed site plan



Be Bold. Shape the Future.
New Mexico State University
nmsu.edu

Facilities and Services

NMDA Building Renovation and Addition

CANOPIES



south elevation

DEKKER
PERICH
SABATINI

HERA laboratory planners

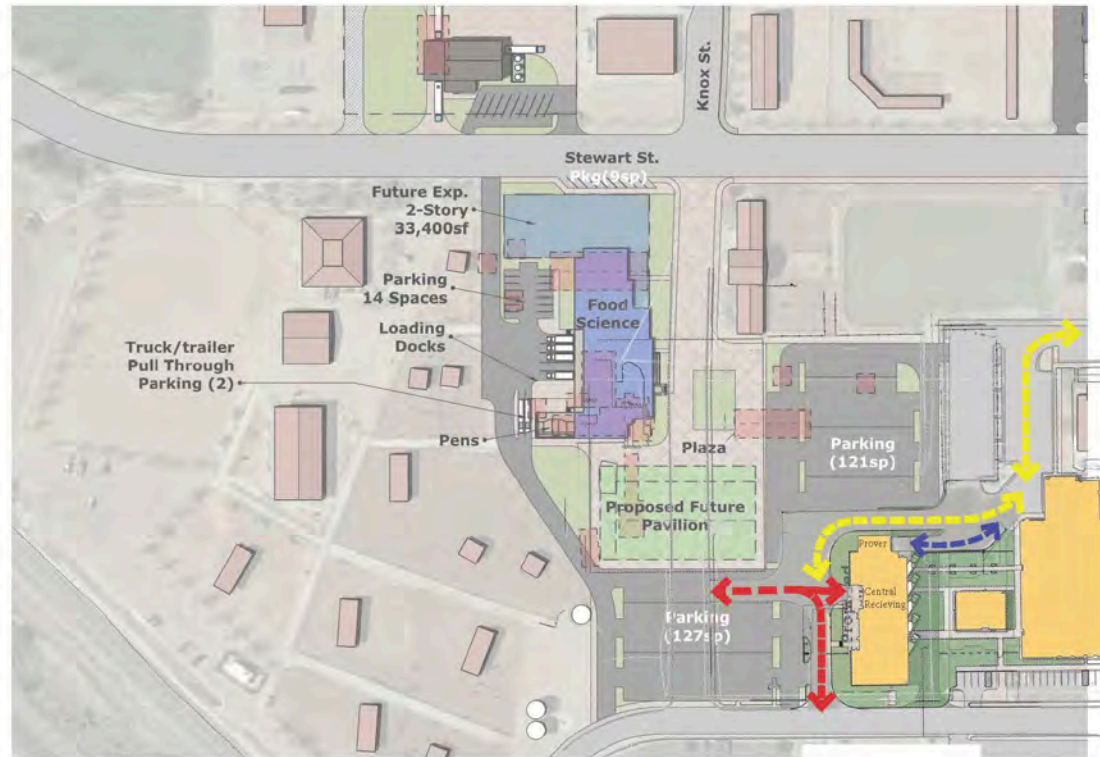
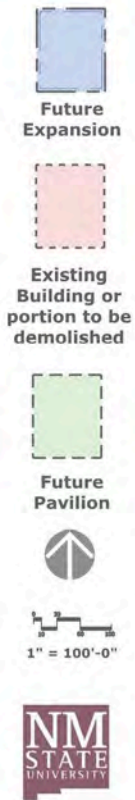
Renderings of proposed new lab building

NM
STATE

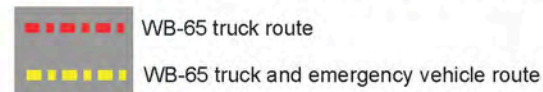
Be Bold. Shape the Future.
New Mexico State University
nmsu.edu

Facilities and Services

NMDA Building Renovation and Addition



Overall Site Diagram - NMSU Food Science Building



Site Diagram of proposed site access



Be Bold. Shape the Future.
 New Mexico State University
 nmsu.edu

Facilities and Services



7. Next Meeting: Wednesday, October 7, 2020, 3:30PM, TBD



Be Bold. Shape the Future.
New Mexico State University
nmsu.edu

Facilities and Services