

Summary Report from May 2020 Recommendations
NMSU Campus Planning Committee
Fast Track Items

Presented to: CPC members + F&S resource staff by e-mail

Report by Heather Zack Watenpaugh
Chair, Campus Planning Committee

1. **Fast Track (Action) Item:**

a. NMDOT I-25/University Avenue Project- NMSU Roundabout Monumental Sign Concepts

The New Mexico Department of Transportation is currently in the construction phase of upgrades to the Triviz Drive/University Avenue/I-25 intersection. The project includes Triviz Drive continuing as an underpass underneath University Avenue, with a traffic circle or roundabout on either side. This work will significantly alter this entrance and offer an opportunity for branding that NMSU will not have again for a long while. As a result, NMSU has been working with the same design team for the monumental signage within the “triangle” to develop concepts for review in order to fund and build enhancements at this entrance.

Two roundabout monumental sign concepts include:

- **Aggie Gates***

The Aggie Gates concept establish a connection to the original entry gates to The Horseshoe, with a modern interpretation of that historic entryway at the east end of campus. A circular retaining wall raises the overall height at the center of the roundabout, setting a dramatic stage for the gates. The gates are angled toward one another, focusing views and creating a welcoming impression for drivers exiting the interstate.

The orientation of the gates and the location of the NMSU brand on both sides of each gate ensures drivers have a direct view of the gates and the brand, from each entrance to the roundabout. A weathered steel accent panel opposite the gates provides balance, reinforces a material from other monument signs on campus, and creates an attractive backdrop for landscape plantings. Multi-stem trees behind the wall add some additional height, color and texture.



- **NMSU Bold***

The NMSU Bold concept uses materials and forms that reflect the style laid out in the NMSU Monument Signage Master Plan including natural stone veneer and weathered steel. The form of the monuments have been modified from the strict rectilinear forms of the Master Plan to make them boldly distinct and to better reflect the context of the roundabout. The swooping curves of the walls and the steel finish within the sign both evoke movement, pulling visitors in towards campus. A central cluster of trees provide a colorful and textured backdrop, with low shrubs adding additional color to the foreground. The whole scene is raised up on a bermed hill in the center of the roundabout.



*Both options are pending NMDOT Gateway Monument Review and approval.

Link to the Information Item 5.e. for **NMSU Monumental Signage Master Plan update provided at the 9/04/2019 meeting:**

<https://architect.nmsu.edu/wp-content/uploads/sites/85/2019/09/2019.09.04-CPC-Presentation-20190904.pdf>

2. **Fast Track (Action) Item:**

a. **Burrell Storage Yard Proposal**

Expand existing site walls to hide storage containers description:

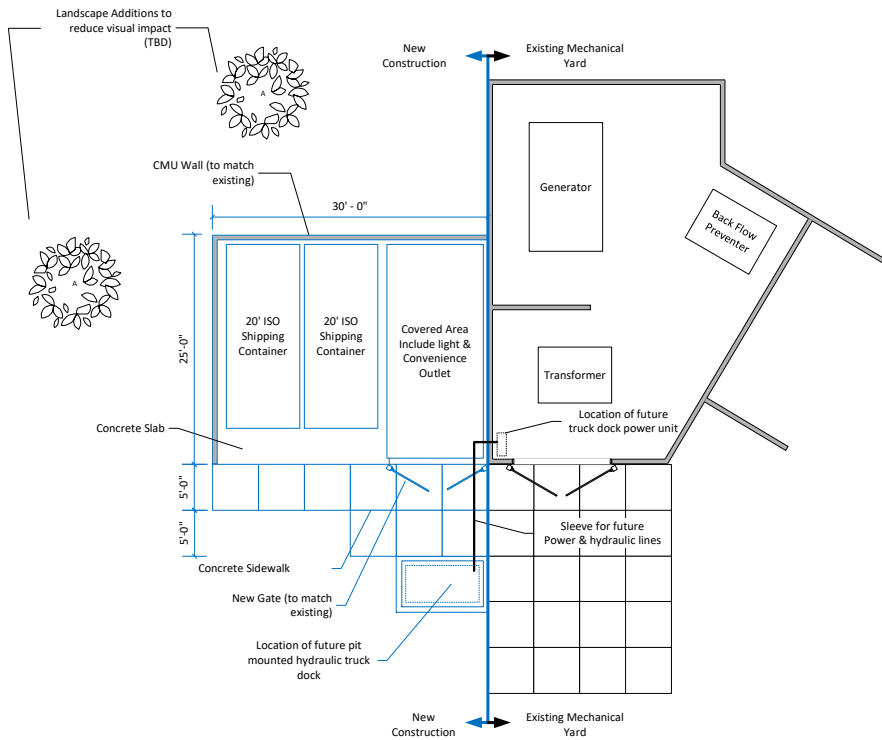
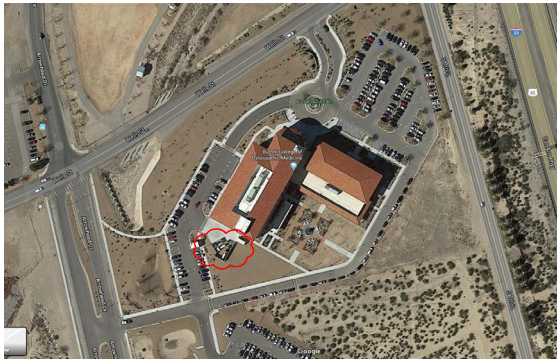
- New concrete slab for new shipping containers (to replace existing rental units)
- New concrete block and stucco privacy walls to match existing
- New gate to match existing gates
- Covered storage for outdoor equipment and golf cart
- Location is adjacent to existing mechanical area
- Landscaping to minimize visible impact
- See attached proposal from Burrell with images



Excerpt from Burrell Storage Yard Proposal:

Several recent remodel projects have seen interior storage rooms at Burrell converted to other uses. This has created a serious shortage of storage on-site. Currently, there are 2 rented shipping containers on the west side of the building that have been used for temporary storage of items during these construction projects. Shipping containers provide an inexpensive, secure, and weather tight storage option, but in their current location, they are not visually appealing.

This proposal would relocate these containers behind a new privacy wall to create a more attractive façade from all directions, but particularly from Arrowhead Drive. This would consist of a concrete pad, surrounded by a stucco privacy wall erected next to the existing mechanical yard, and finished to match. A set of new storage containers would be moved to this area, and the existing rental units would be removed. A small, post and purlin structure covered with PBR roof panels would provide an area to store some outdoor equipment, a 2nd golf cart, etc. This area would be gated to match the existing mechanical yard gates. Additional trees / plantings will be included to minimize the visual impact of the wall from the west and south side.



The precedent study for the proposed concept plan for entry signage for the Las Cruces campus should begin with the characteristics of the historical entry gates that once marked the west entry to The Horseshoe in material and proportion, while also complementing the preferred architectural style (Spanish Renaissance Revival), and tie into existing illuminated university signage. The Miller Gates stood at the entry to university's athletic field, called Miller Field, now the location of Skeen Hall. While the Miller Gates are stucco, symmetrical about the entry, and have an arched opening on either side, the portions are not as classically appealing as the original gates. For the proposed new entry signage, the original entry gates will form the basis for the discussion.

1. Option 1- Combination of Aggie Revival, Aggie Classic and Gates.

2. Images of original entry gates to The Horseshoe

The original entry gates to the main campus once stood at the west end of The Horseshoe. These entry gates were stucco and included wrought iron fencing.



The Horseshoe, entry gates, circa 1914.

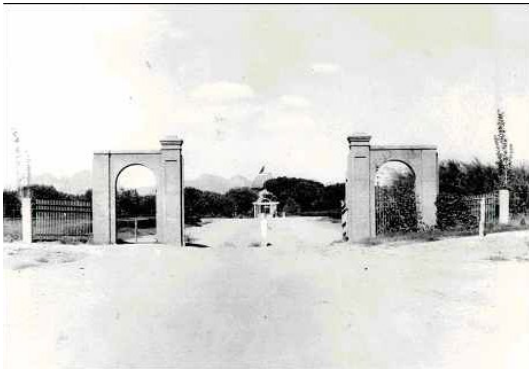
Notable defining characteristics:

- Proportions of square column and arch
- Recessed panel at column
- Column cap and coping articulation
- Curved metal gate and fencing
- Placement at street edge
- Pedestrian interaction and path of travel
- Stucco

3. Location and Hierarchy. Proposed locations will depend on concept design for signage. Overall, the analysis for campus entry signage locations and hierarchy is clear.

4. Massing. Preferred massing by hierarchy would be:

- Primary- Arch entry as a vertical marker
- Secondary- Lower vertical marker and low wall
- Tertiary- Lower vertical marker only



Entry gates to The Horseshoe, circa 1914-1930s. Construction and removal date, unknown.

5. **Style.** Combination of Aggie Revival, with greater connection to the original gates; Aggie Classic by incorporating stone and possible steel channel; and Gates by including a modern interpretation of the historical entryway to The Horseshoe.



Entry gates proposed at roundabout or Stewart Street for primary entrance.

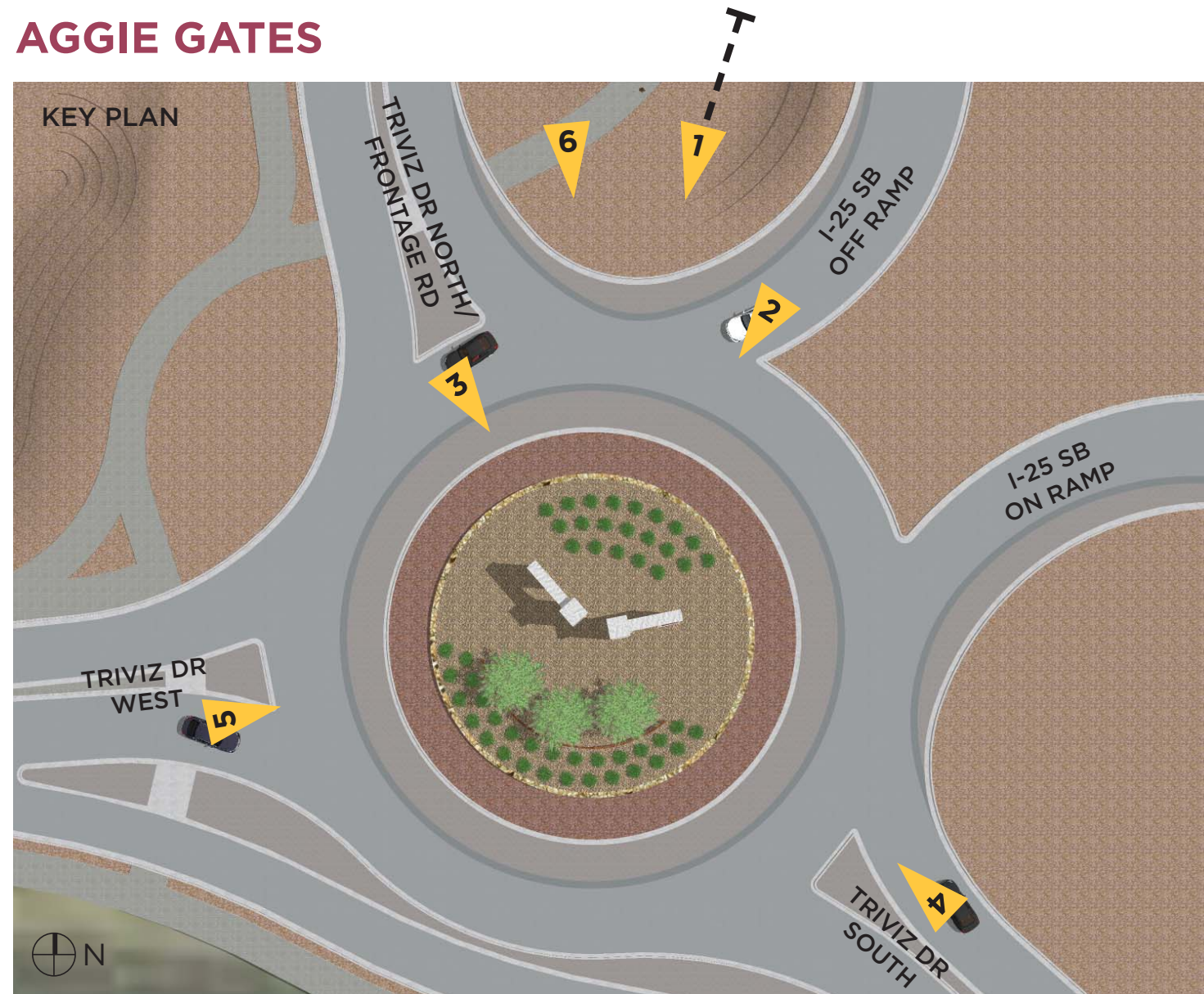
6. Construction Materials

Characteristics from original gates and existing signage elements for new signage:

- Proportions of square column and arch
- Recessed panel at column (lettering)
- Cast stone cap for vertical marker and wall
- Metal gate (as needed for possible closure for pedestrian only travel)
- Placement at street edge
- Pedestrian interaction and path of travel
- Low wall, retaining wall in some locations
- Stone veneer
- Steel channel
- Stucco
- Typeface is Gotham

7. **Option 2- Aggie Modern.** Make minor revisions to Aggie Modern in order to conceal lighting for sides/top.

AGGIE GATES



The Aggie Gates concept establish a connection to the original entry gates to The Horseshoe, with a modern interpretation of that historic entryway at the east end of campus. A circular retaining wall raises the overall height at the center of the roundabout, setting a dramatic stage for the gates. The gates are angled toward one another, focusing views and creating a welcoming impression for drivers exiting the interstate. The orientation of the gates and the location of the NMSU brand on both sides of each gate ensures drivers have a direct view of the gates and the brand, from each entrance to the roundabout. A weathered steel accent panel opposite the gates provides balance, reinforces a material from other monument signs on campus, and creates an attractive backdrop for landscape plantings. Multi-stem trees behind the wall add some additional height, color and texture.



AGGIE GATES

3 | VIEW FROM TRIVIZ DRIVE NORTH/FRONTAGE ROAD



4 | VIEW FROM TRIVIZ DRIVE SOUTH



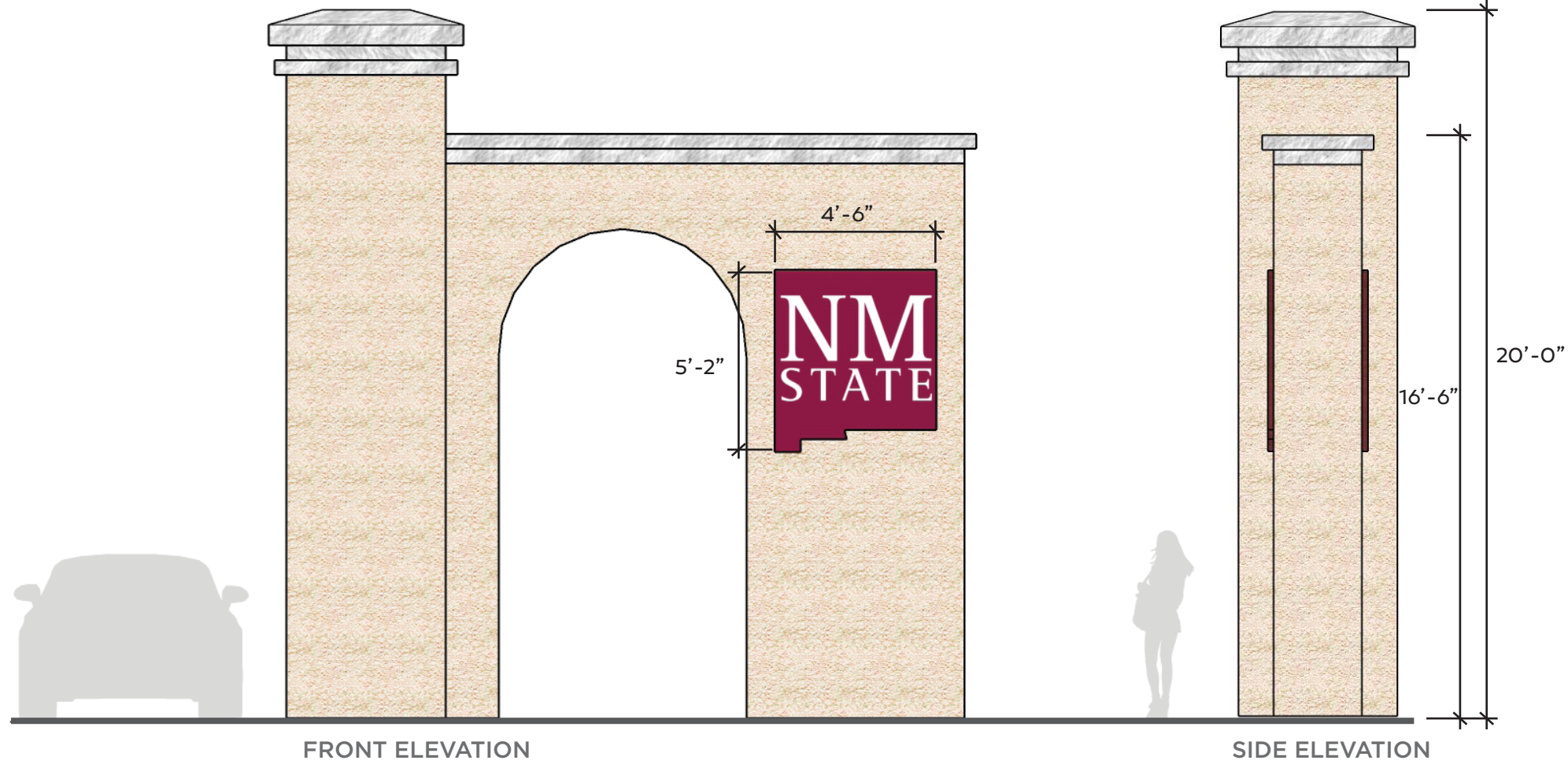
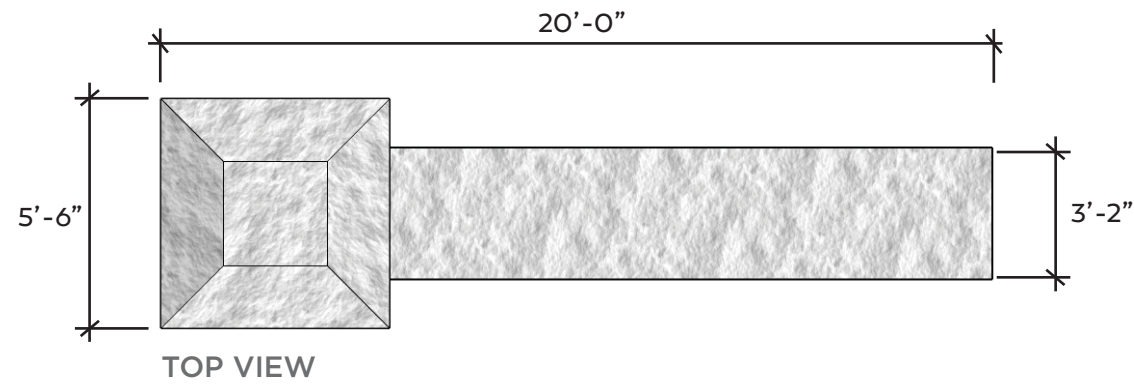
5 | VIEW FROM TRIVIZ DRIVE WEST



6 | VIEW FROM PEDESTRIAN PATH



AGGIE GATES



DESCRIPTION

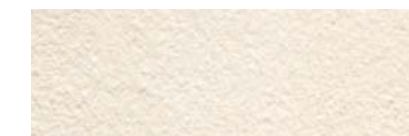
This monument sign is scaled to comply with NMDOT standards and to create a strong impression at an important campus gateway. The monument walls will be stuccoed a cream color to match buildings throughout campus. A classic cut stone cap provides minimal contrast allowing the focus to remain on the NMSU brand. Shielded ground lights will be used to wash light on the gates and NMSU logo, as well as decorate the weathered steel wall. All lighting will be night sky compliant.

TYPOGRAPHY

The NMSU logo will follow University brand standards.



COATED METAL WITH VINYL LETTERING

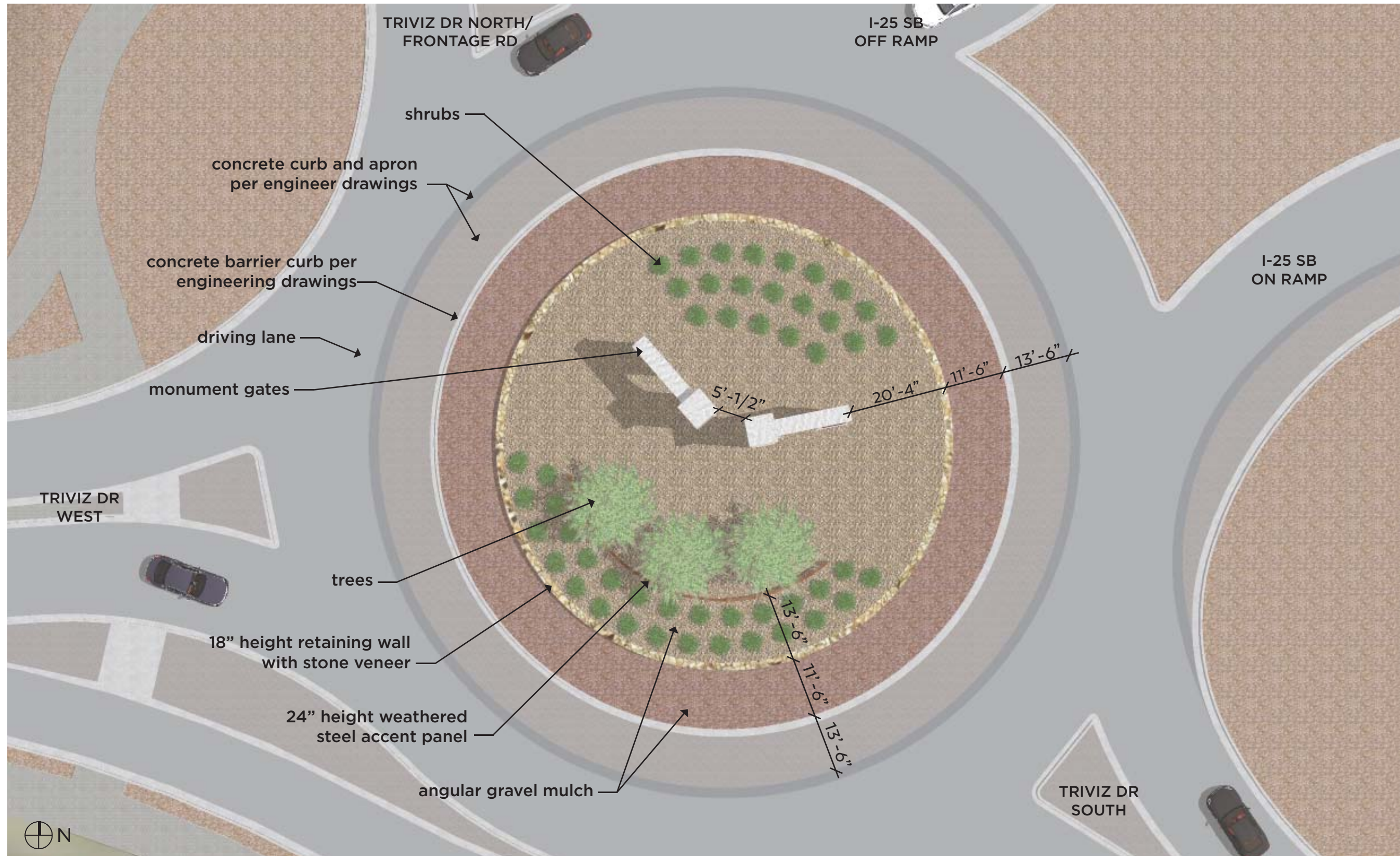


CREAM STUCCO

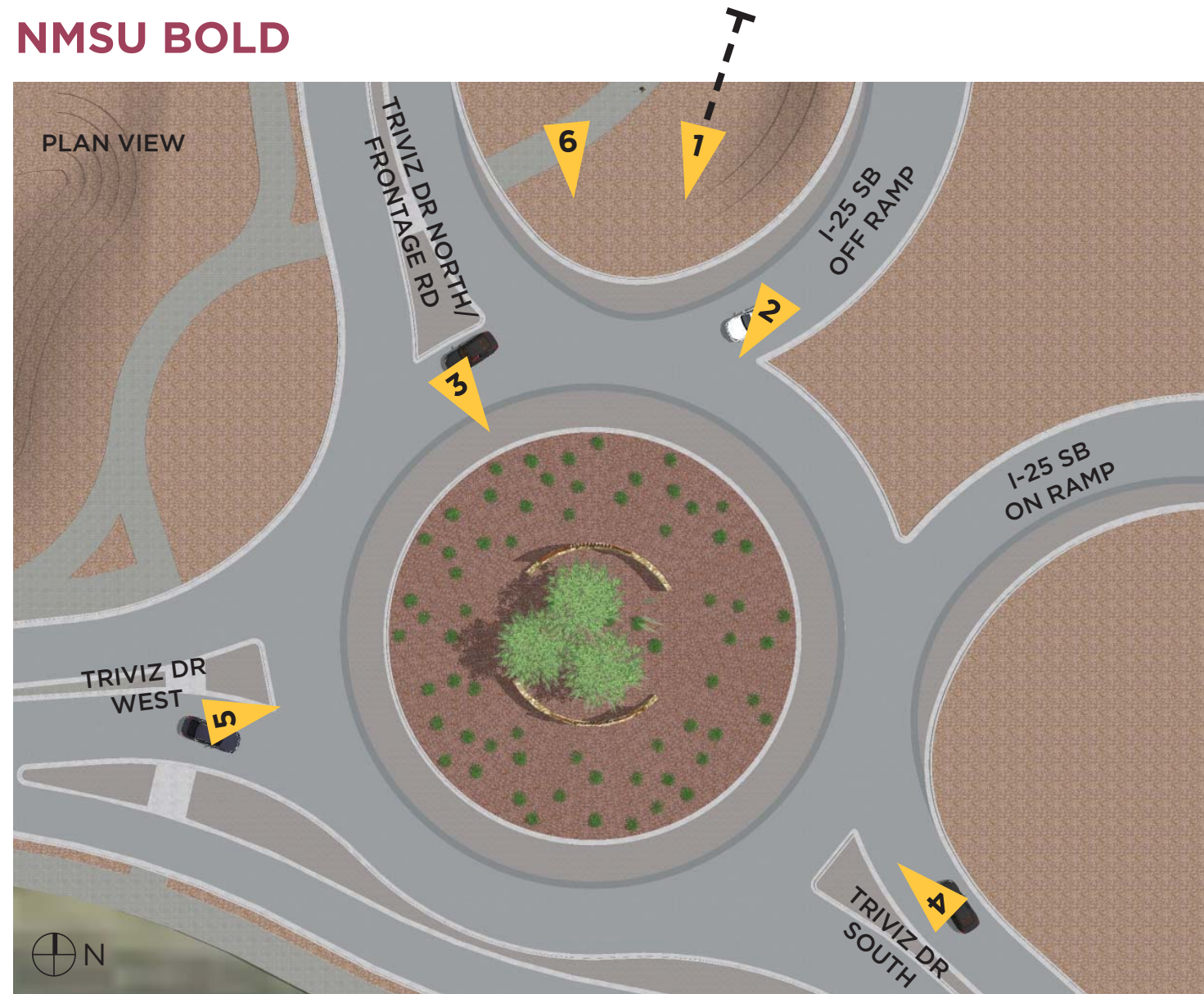


CUT STONE

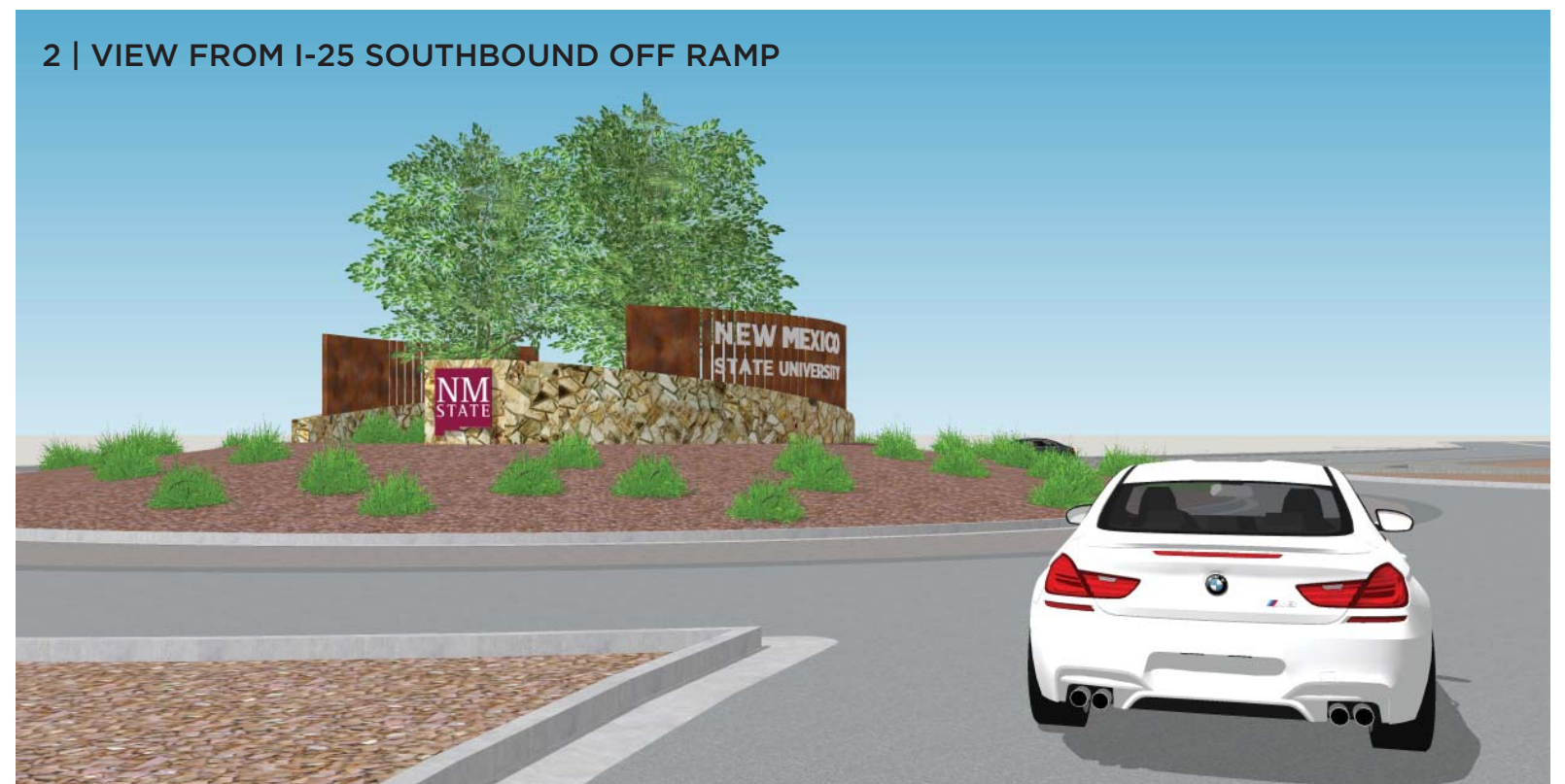
AGGIE GATES



NMSU BOLD



The NMSU Bold concept uses materials and forms that reflect the style laid out in the NMSU Monument Signage Master Plan including natural stone veneer and weathered steel. The form of the monuments have been modified from the strict rectilinear forms of the Master Plan to make them boldly distinct and to better reflect the context of the roundabout. The swooping curves of the walls and the steel fins within the sign both evoke movement, pulling visitors in towards campus. A central cluster of trees provide a colorful and textured backdrop, with low shrubs adding additional color to the foreground. The whole scene is raised up on a bermed hill in the center of the roundabout.



NMSU BOLD

3 | VIEW FROM TRIVIZ DRIVE NORTH/FRONTAGE ROAD



4 | VIEW FROM TRIVIZ DRIVE SOUTH



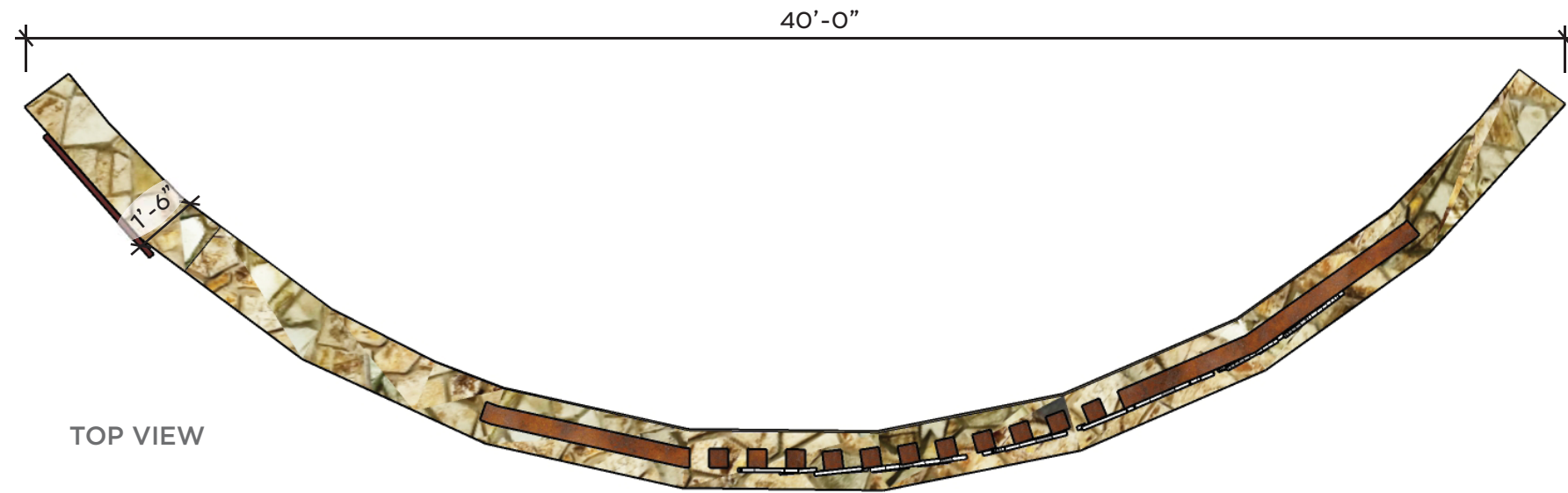
5 | VIEW FROM TRIVIZ DRIVE WEST



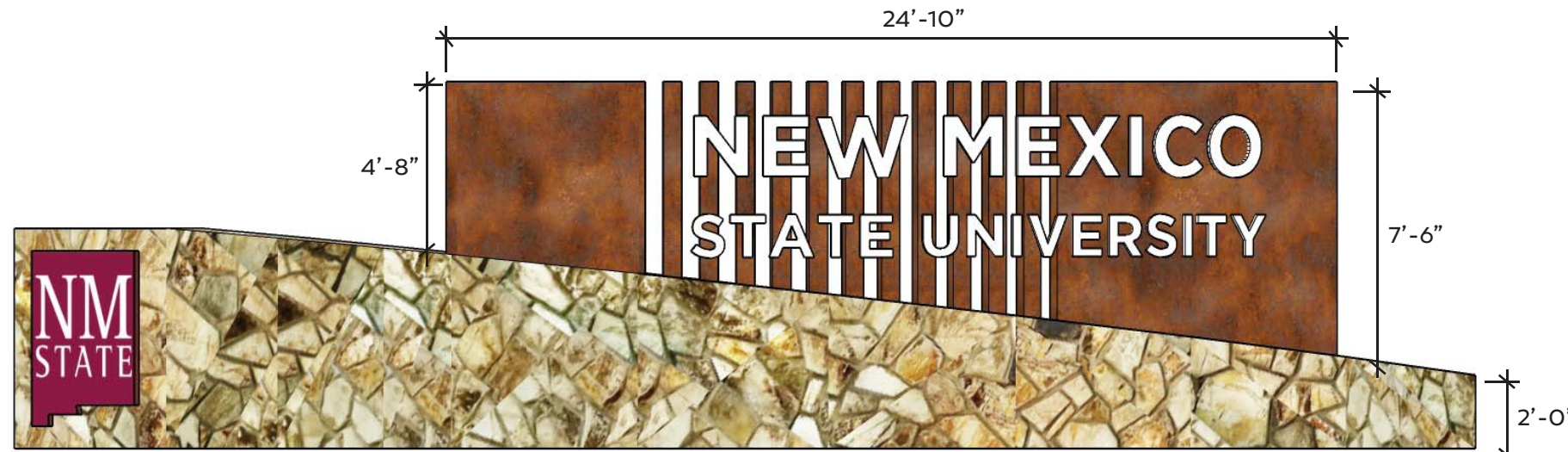
6 | VIEW FROM PEDESTRIAN PATH



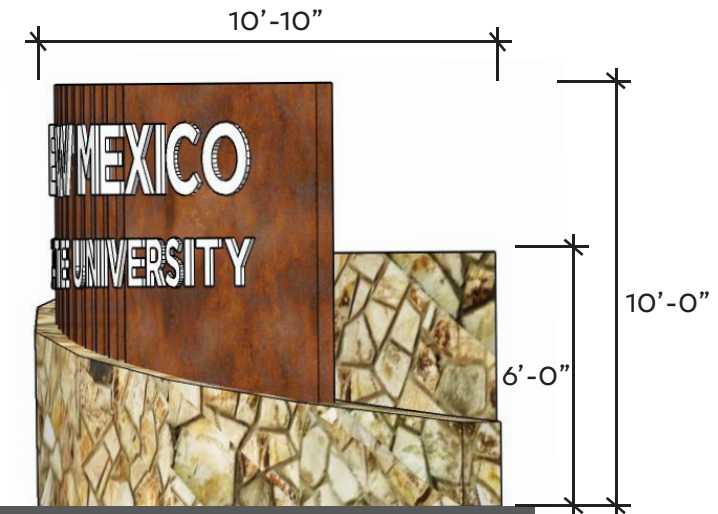
NMSU BOLD



TOP VIEW



FRONT ELEVATION



SIDE ELEVATION

DESCRIPTION

The swooping curved wall of the sign is covered with a natural stone veneer and features a weathered steel panel rising out of it. The panel is broken into fins making a dynamic backdrop to the university name. The aluminum letters will be powdercoated white. Shielded ground lights will be used to wash the monument signs and will be night sky compliant.

TYPOGRAPHY

'NM' - 20" cap height
'State' - 10" cap height
Gotham Bold, uppercase only

The NMSU logo will follow University brand standards.



WEATHERED STEEL



NATURAL STONE VENEER



COATED METAL WITH VINYL LETTERING



WHITE POWDERCOATED ALUMINUM LETTERS

NMSU BOLD

