

# Summary Report – September 5, 2018 Recommendations

## NMSU Campus Planning Committee

Present: members + F&S resource staff (list at end of report)

Report by Heather Zack Watenpaugh  
Chair, Campus Planning Committee

### 1. Campus Planning Committee Charge:

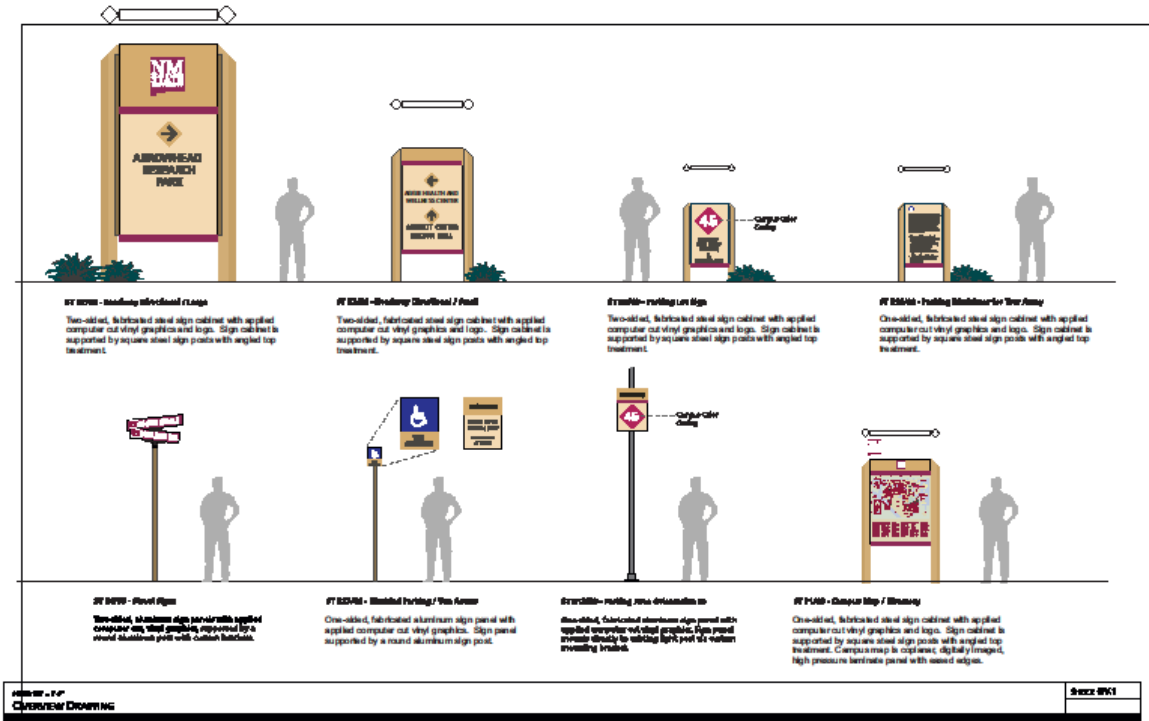
- Established by the President as an advisory group
- Review impact of visual, physical appearance of the campus
- NMSU's heritage preservation (historic preservation) committee
- Wayfinding/Signage policy
- CPC review projects within the triangle of I25/I10 and University Avenue, including ADI and Arrowhead
- Recommendations to the President for final approval

### 2. Information Item: Campus Master Plan 2017-2027 Update

- Presented final text to the Board of Regents, 5/11/2018
- The completed and finalized document is on-line, <http://architect.nmsu.edu/masterplan/>
- Differences 2006 to 2017 Master Plan:
  - Strategic renovations and/or new construction followed by demolition of the old facility
  - This approach is being used at Dan W. Williams Hall and with the agricultural facilities, and has the added impact of reducing deferred maintenance
  - The 2006 Plan envisioned relocation of agricultural facilities; the 2017 Plan takes advantage of their historical significance
  - Place-making and amenities with areas such as McFie Circle will be a focus
  - The 2017 Plan includes Arrowhead Park and Aggie Uptown updated development plans

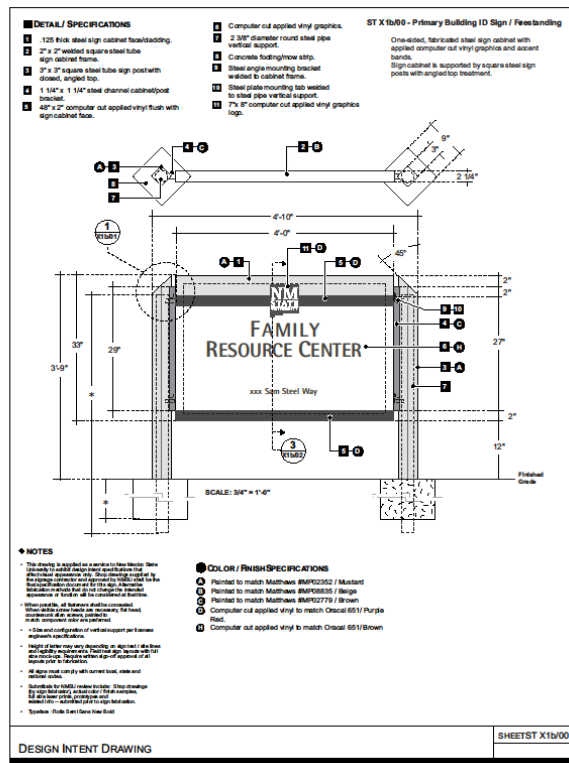
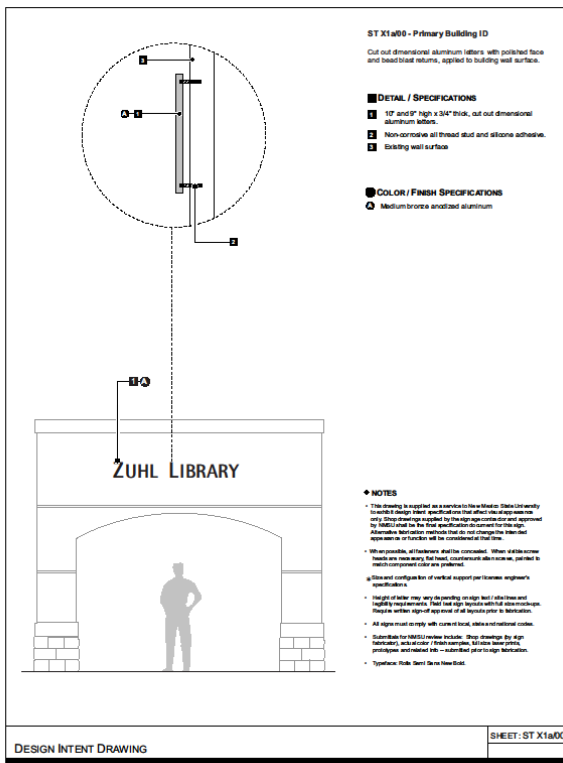
### 3. Campus Wayfinding and Signage Policy updates

- Updates to the Campus Wayfinding and Signage Policy to include:
  - Current freestanding identification signs
  - Signage dimensions, details and specifications
  - Room signage color options
- Review and approval at next CPC meeting



DESIGN INTENT DRAWING

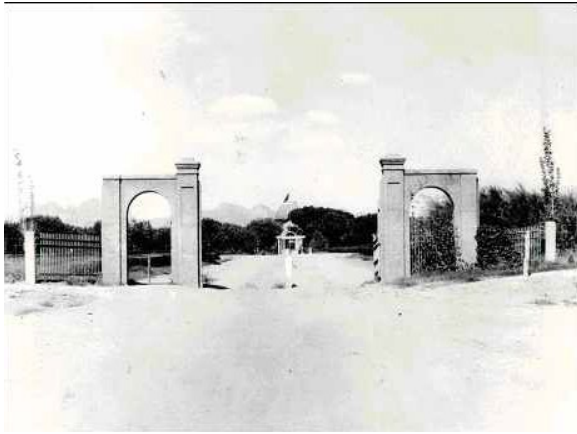
SHEET 0001







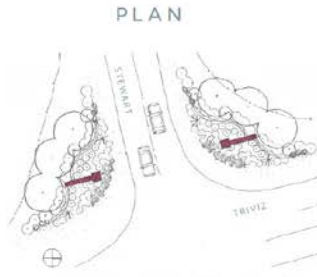
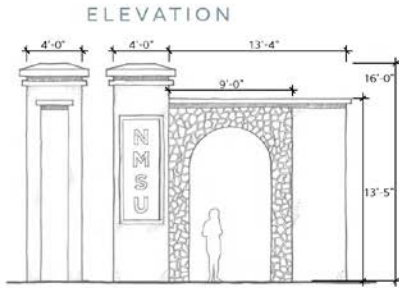
## 5. Monumental Signage Concept



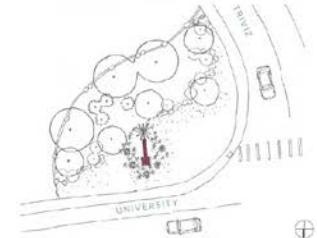
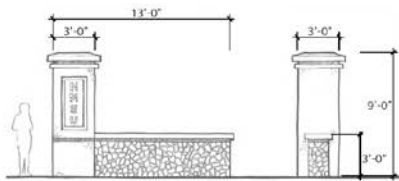
- Precedent study began with original entry gates to The Horseshoe, shown circa 1914-1930s. Construction and removal date, unknown.
- Miller gates were the entry to the university's athletic field, called Miller Field, now Skeen Hall



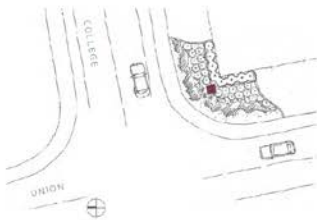
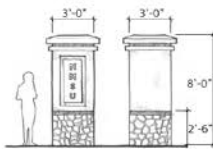
R1/01 PRIMARY



R1/02 SECONDARY



R1/03 TERTIARY



CONCEPT ONE | Aggie Gates

NMSU Monument Signage Master Plan • August 2018

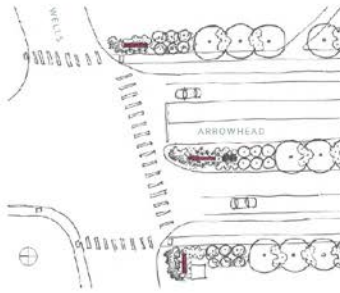
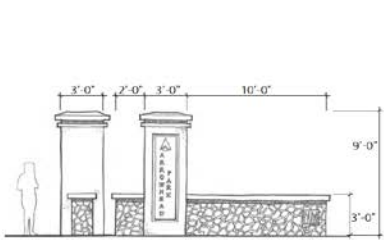


ELEVATION

PLAN

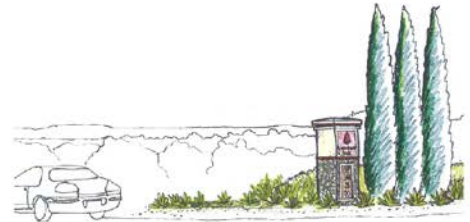
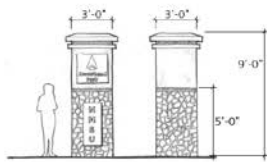
PERSPECTIVE

R1/01.A PRIMARY



ARROWHEAD AND WELLS

R1/02.A SECONDARY



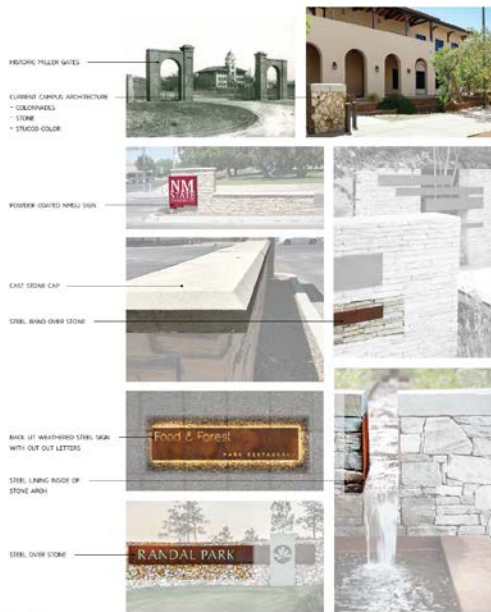
TRIVIZ AND CHOLLA



CONCEPT ONE | Aggie Gates  
NMSU Monument Signage Master Plan • August 2018



PRECEDENTS



PLANTS

A MIX OF NATIVE AND ADAPTED PLANTS CHOSEN FOR VIBRANT HUES, LOW MAINTENANCE, AND LOW WATER USE.



FOR BENCHES SIGN LOCATIONS LACKING A DEDICATED WATER SOURCE, A PALETTE OF SUBSTRATE SUPPORTED PLANTS IS PROPOSED:

- PINKISH AGAVE
- CLAYT CLIP SACTUS
- SOTOL
- DOTTENLIP
- SANDWICH PRICKLY PEAR

MATERIALS



CONCEPT ONE | Aggie Gates  
NMSU Monument Signage Master Plan • August 2018

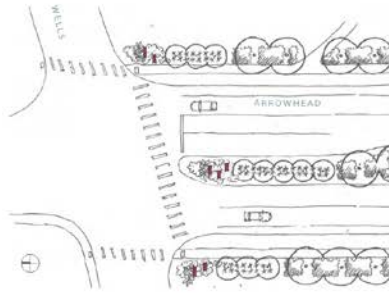
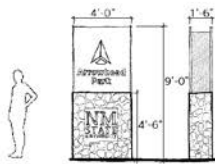


ELEVATION

PLAN

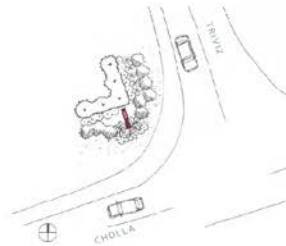
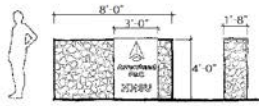
PERSPECTIVE

R1/01.A PRIMARY



ARROWHEAD AND WELLS

R1/02.A SECONDARY



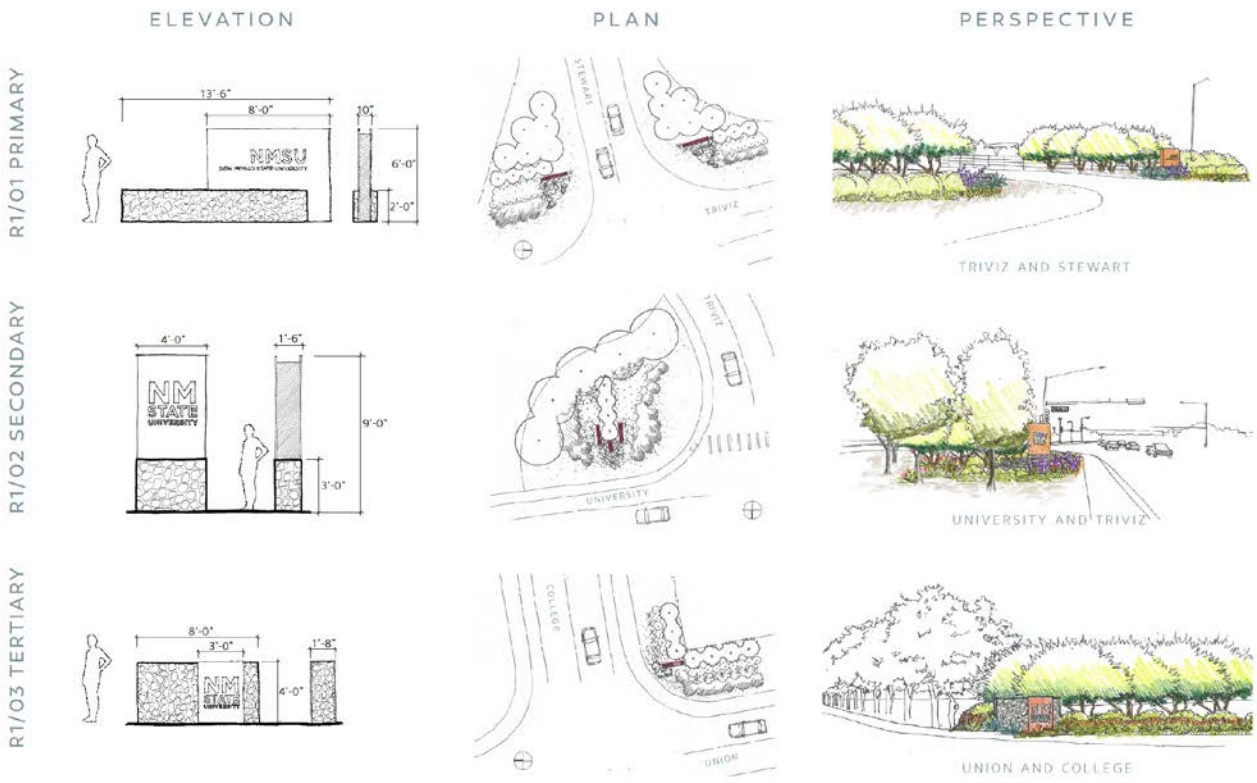
TRIVIZ AND CHOLLA



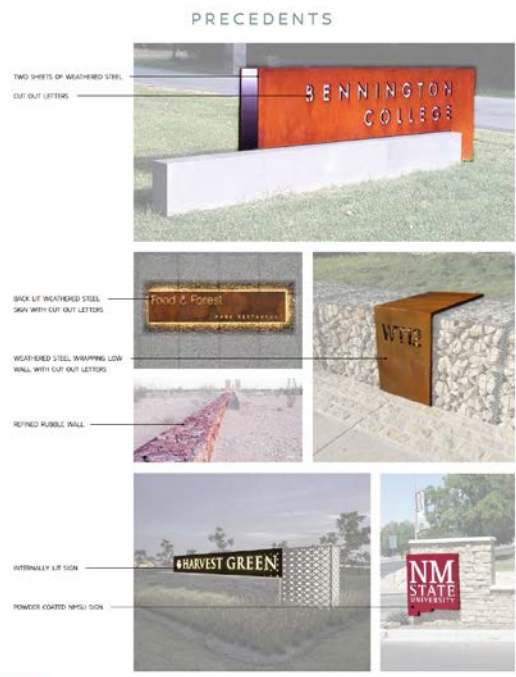
CONCEPT TWO | Aggie Modern  
 NMSU Monument Signage Master Plan • August 2018







**CONCEPT TWO | Aggie Modern**  
**NMSU Monument Signage Master Plan • August 2018**



**CONCEPT TWO | Aggie Modern**  
**NMSU Monument Signage Master Plan • August 2018**



**Recommended approval**, to combine Monumental Signage Concept 1 (Aggie Gates) and 2 (Aggie Modern)- Proposed Primary, Secondary and Tertiary signs together into one signage grouping or add the gates to several (1 or 2) key locations and move forward with Concept 2, Aggie Modern. (All in favor)

Follow up images from MRWM regarding the signage and options in combining, as recommended by the CPC.

#### 6. Zuhl Collection Installations at Breland, Gardiner and Domenici Halls

- Geological Sciences Departments has proposed installations from the Zuhl Collection at various buildings around campus.
- Initial facilities to include Breland Hall (Arts and Sciences Administration building), Gardiner Hall (Geological Sciences), and Domenici Hall (College of Business).
- Zuhl Museum and Zuhl Library do not have additional storage areas to house the entire geological collection of petrified wood.
- Proposed collection pieces 3'x2' in size
- Largest piece is 8'x5.5' in size
- Additional wall reinforcement may be required
- Wall preparation and installation costs by donor
- Smaller pieces to be grouped together for displays
- Building user group/building monitor to be notified prior to installation



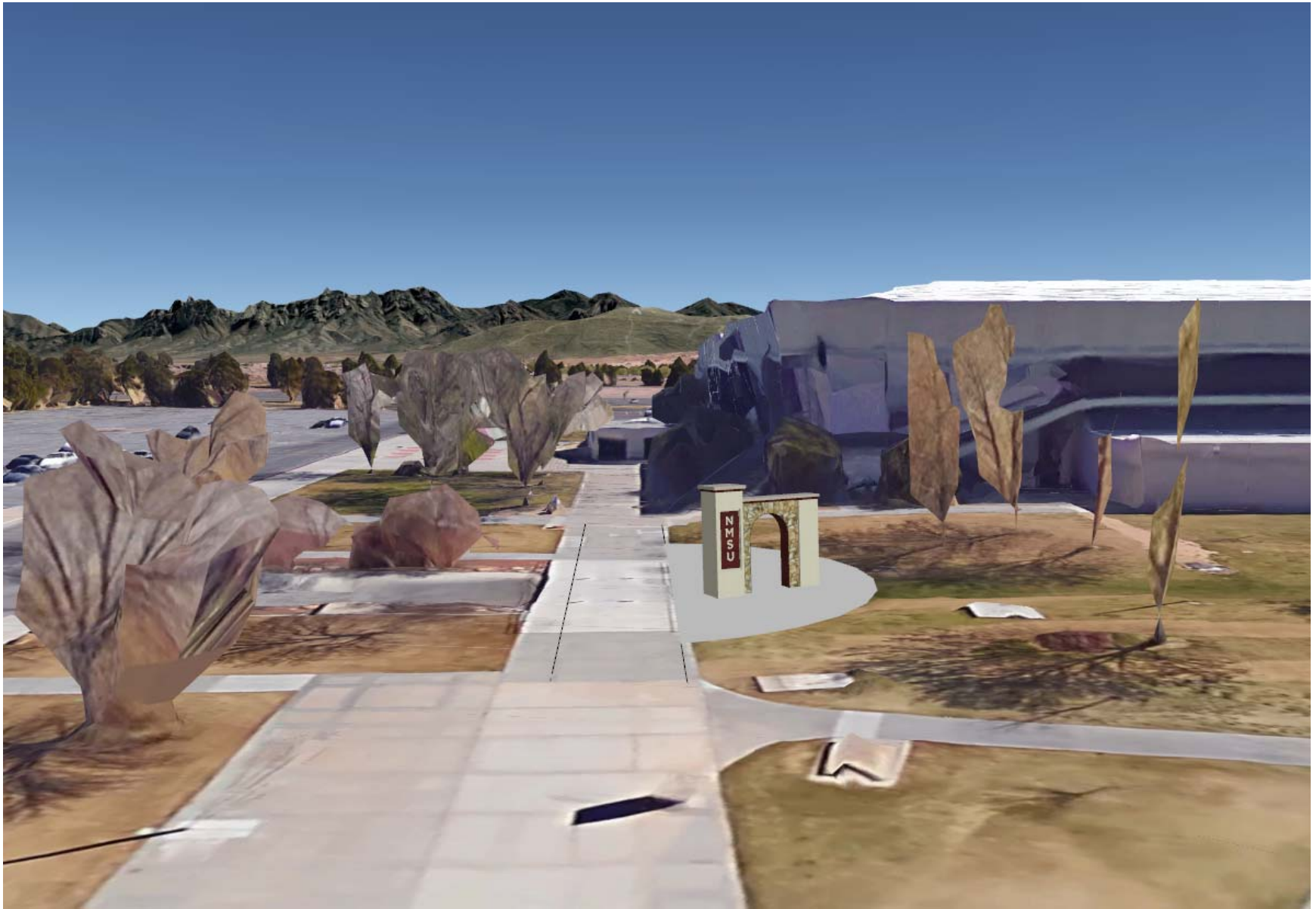
**Recommended approval**, for installation of Zuhl Collection at Breland, Gardiner, and Domenici Halls. Installation must be grouped, and deans and building monitors notified of locations. (All in favor)

#### 7. List of Members in Attendance:

Patti Havstad, Jim Murphy, David Mitchell, Conni DeBlieck, Kate Terpis, Mike Luchau, Jan Bonestroo for Emerson Morrow, Tara Young, Becky Corran, Sonia White for Monica Dunivan, Heather Watenpaugh, joni newcomer, Darlene Nelson, Michelle Gavin, James Hall, Jack Kirby, Robert Herrera, Jon Webster, and Greg Smith.











COWZ



NMSU

NEW MEXICO STATE UNIVERSITY



