

Summary Report – September 6, 2017 Meeting NMSU Campus Planning Committee

Present: members + F&S resource staff (list at end of report)

Report by Heather Zack Watenpaugh
Chair, Campus Planning Committee

See attached presentation for agenda and individual items.

Recommendations of the committee:

1. Information Item: Campus Master Plan 2017-2027 Update

- Presented draft text to Board of Regents, 8/01/2017
- Completed 30 day input period, 9/01/2017
- Illustrative Teams (3) completed images and graphics for document
- Team 1, also the document layout in InDesign, 9/08/17
- Cover and final review with writer and proofreader
- Back to BOR for final approval, 10/13/17 (TBD)



(Professional Photos of Existing Campus)



(Vignette Sketches)

2. Information Item: Signage on Buildings

Building ID/Dimensional Letters are:

- Bronze letters
- 10" and 9" high x ¾" thick
- Mounted on the exterior wall surface
- Proposed change would prohibit any new building letters mounted to the exterior wall surface.
- Cost of repair of exterior skin (stucco) and replacement of dimensional letters.
- Structure signage will be freestanding identification sign (yellow) with official building name only.



ST R7/00 – Parking Lot / Structure ID Sign

Function and Intent

The function of a parking lot / structure identification sign is to adequately identify the lot or parking structure to approaching vehicular traffic in a safe and appropriate manner.

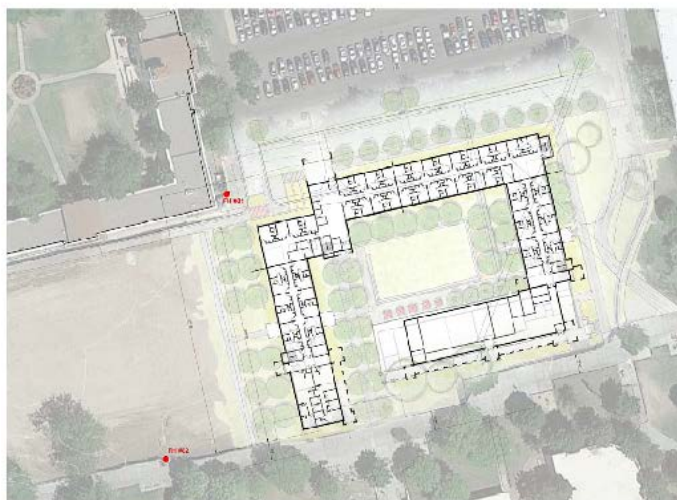
Description

This sign shall be a freestanding sign (as shown) or, when necessary, graphics applied to an existing structure (like a campus landscape wall or the parking structure itself, with appropriate wall space and an elevation that faces a public view corridor).

3. Action Item: NMSU New Residence Hall

- Design and construct a New Residence Hall building with 300 beds, mixed use and support spaces.
- The new facility will build to, as a minimum, LEED Silver Certification.
- Location North of International Mall and East of Jordan (previous Monagle Hall building site).
- Building Size is approximately 78,000 GSF.
- Opening Fall 2019.

Site Plan & Civil Engineering



SITE PLAN
SCALE: 1"=20'

Image of Proposed Site Plan on International Mall

View

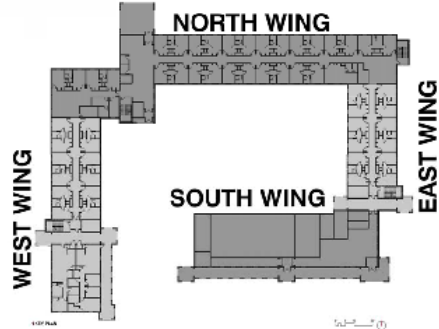
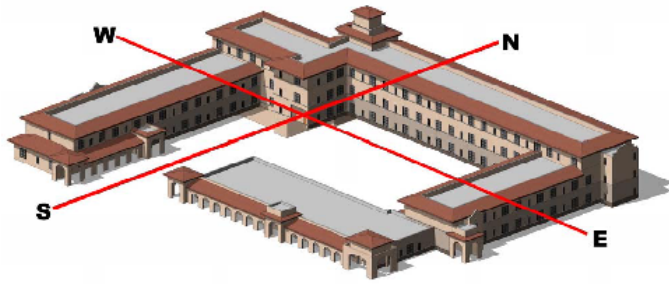


Image of Proposed Site Plan context considerations



Image of Proposed New Residence Hall- View looking north-west from I-Mall

1st Floor Plan

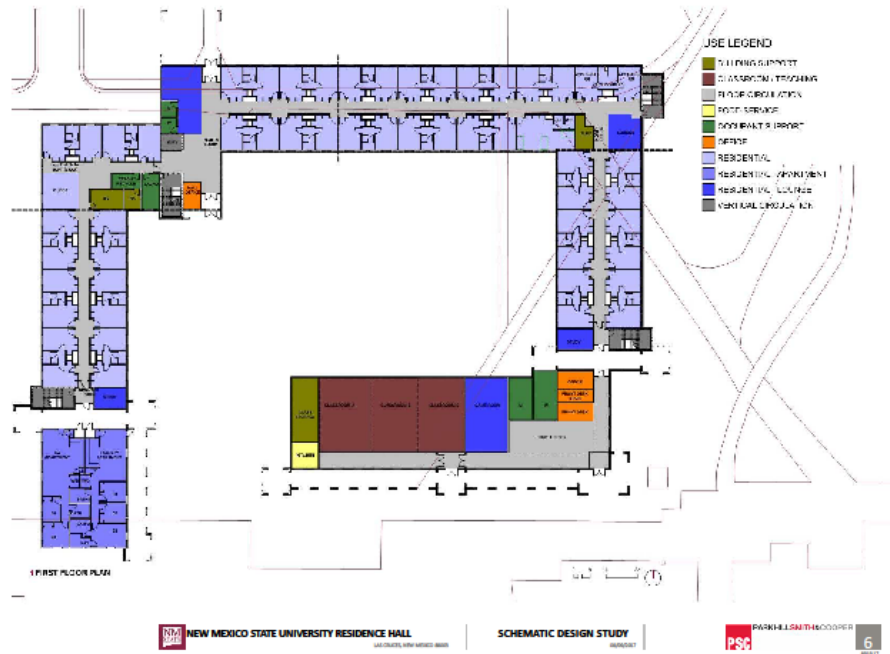


Image of Proposed Ground Floor Plan

Double Semi-Suite

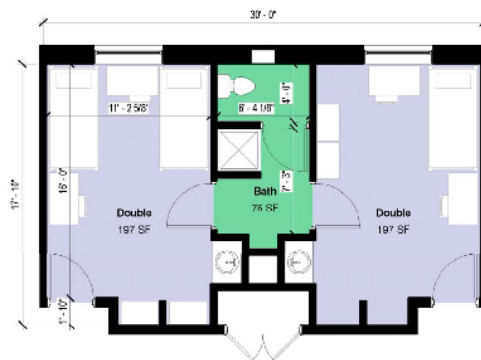


Image of Proposed Double Semi-Suite, typical unit type
Recommend approval, for NMSU New Residence Hall on I-Mall (former Monagle Hall site)
(Received all in favor)

4. Action Item: Sisbarro Park Shade Structure

- Project funded from BRR and Advancement gift.
- Proposed new shade structure is prefabricated.
- Location along “Tailgate Aggie Alley” south of Stewart St.
- Structure size is approximately 20’x 40’ or 12’x12’.
- Considering 1-3 prefabricated structures, depending on size and location selected.
- Additional scope includes walking path connection to existing Sisbarro Park trails, landscaping and electricity.
- Benches and/or picnic tables at new shades structure(s).



Image of Concept Sketch for Sisbarro Park



A

Doerr Park, San Jose, CA: 20' x 20' model with Jade Green roof. Externally-placed columns maximize interior space.



B

Cactus Park, Scottsdale, AZ: A Hemlock Green HR-36 steel roof covers this 20' x 20' model.

The recessed roof of the Biltmore contemporary, uncluttered design fits many architectural styles. Columns placed at the outside corners of the structure to maximize interior space.

- Contemporary design
- Square or rectangle
- Recessed roof between heavy columns
- Measured from outside to outside (varies slightly along eave)



B

Option 1- Prefabricated Structure (large):

- "Biltmore" Model
- 20'x40' size
- Green patina roof color to tie back to new restroom and Fulton Center
- Include seating
- Provide electricity
- Use for tailgating and community



MESA

Our most popular model features a practical and attractive hip roof design that sheds water efficiently and provides excellent shade. Available in a wide variety of shapes and sizes: square, rectangle, "U" and "L" shapes. Shade a single picnic table, cover a playground or an entire basketball court.

- Popular hip roof design
- Heavy duty square steel construction
- Available in square, rectangle, "L" or "U" shapes
- Many sizes available
- Measured eave to eave

◀ Lost Dutchman State Park, Apache Junction, AZ: A structure as rugged as its surroundings, this 20' x 20' Mesa model awaits anyone needing a little shade and awesome scenery. Shown with Parchment-colored HR-36 steel roof.



Estates at Park Avenue, Orlando, FL: 12' x 12' Mesa Model w/ HR-36 steel roof, 6:12 pitch, Weathered Copper color.



Community Sports Park, Cummings, GA: This economical design stands up to heavy use and keeps looking great. 24' x 40' model shown with Forest Green HR-36 steel roof.



Meadow Woods Park, Orlando, FL: 12' x 12' 2-post Mesa model, tubular steel fascia and 12" o.c. standing seam steel roof. Brilliant Blue powder coat finish.



Burgess-Setzler Park, Snohomish, WA: Custom 12' x 12' two-post Mesa with Royal Blue standing seam roof (6:12 pitch), tubular steel fascia and decorative round column.



Copper Hills High School, Fresno, CA: A 35' square model provides shade and stands up well to the abuse of teenagers! This specific structure is California DSA approved.

Option 2- Prefabricated Structure (small):

- "Mesa" Model

- 12'x12' size
- Green patina roof color to tie back to new restroom and Fulton Center
- Include seating
- Provide electricity
- Use for tailgating and community

Sisbarro Park Shade Structure, Steel Roofing and Color Options:

STEEL ROOF SPECIFICATIONS

- 14 gauge galvanized with 30 year warranted paint finish on top and white paint on bottom.
- 7 wide panels w/ 1/2" spacing, 12' panels w/ 1/2" spacing, 12' panels w/ 1/2" spacing, 12' panels w/ 1/2" spacing.
- 12' panels w/ 1/2" spacing, 12' panels w/ 1/2" spacing, 12' panels w/ 1/2" spacing, 12' panels w/ 1/2" spacing.
- 12' panels w/ 1/2" spacing, 12' panels w/ 1/2" spacing, 12' panels w/ 1/2" spacing, 12' panels w/ 1/2" spacing.
- 12' panels w/ 1/2" spacing, 12' panels w/ 1/2" spacing, 12' panels w/ 1/2" spacing, 12' panels w/ 1/2" spacing.

ROOF COLORS

AFP Iron and Melrose Metals are our primary roof suppliers. All colors are available from both companies, unless otherwise noted. The color collection marked (P) are only available from Melrose Metals. These references marked with (**) will incur an upcharge fee.

RED FINISH: Standing joints (top and bottom) can vary slightly from black to brown.

Cast Iron	Cast Iron	Cast Iron	Cast Iron
Cast Iron	Cast Iron	Cast Iron	Cast Iron
Cast Iron	Cast Iron	Cast Iron	Cast Iron
Cast Iron	Cast Iron	Cast Iron	Cast Iron
Cast Iron	Cast Iron	Cast Iron	Cast Iron
Cast Iron	Cast Iron	Cast Iron	Cast Iron
Cast Iron	Cast Iron	Cast Iron	Cast Iron
Cast Iron	Cast Iron	Cast Iron	Cast Iron
Cast Iron	Cast Iron	Cast Iron	Cast Iron
Cast Iron	Cast Iron	Cast Iron	Cast Iron

All Painted Color Samples in this brochure are approximations only! PLEASE CALL FOR ACTUAL COLOR MATERIAL SAMPLES.

FRAME POWDER COAT COLORS

Many other powder coat colors are available at no additional charge. These references marked with (P) are samples of premium paint colors and will incur an upcharge.

White	Black	Blue	Green	Red
White	Black	Blue	Green	Red
White	Black	Blue	Green	Red
White	Black	Blue	Green	Red
White	Black	Blue	Green	Red
White	Black	Blue	Green	Red
White	Black	Blue	Green	Red
White	Black	Blue	Green	Red
White	Black	Blue	Green	Red
White	Black	Blue	Green	Red

All Painted Color Samples in this brochure are approximations only! PLEASE CALL FOR ACTUAL COLOR MATERIAL SAMPLES.

FRAME & COLUMN COATING SPECIFICATIONS

Standard (Primer Paint) Finish

- Steel structural steel
- Factory applied primer
- 1/2" thick zinc primer
- 1/2" thick zinc primer
- 1/2" thick zinc primer
- 1/2" thick zinc primer

Powder coating with zinc rich primer and TGIC polyester

- Steel structural steel
- Factory applied zinc rich primer
- TGIC Polyester
- 1/2" thick zinc primer
- 1/2" thick zinc primer
- 1/2" thick zinc primer

Hot-Dip Galvanizing

- Chemical metal
- Factory applied hot dip zinc galvanizing
- 1/2" thick zinc primer
- 1/2" thick zinc primer
- 1/2" thick zinc primer

***Note: An optional Super-Durable TGIC and powder coating TGIC color are also available for any upcharge.**

Recommend approval, for 2-3 smaller 12'x12' shade structures over a larger structure.
 (Received all in favor, 3 comments and 0 opposed)

**Agenda Items – September 6, 2017 Meeting
NMSU Campus Planning Committee
Facilities and Services, Large Conference Room – 4:00 pm**

- 1. Introductions**
 - a. Welcome**

- 2. Information Items:**
 - a. Campus Master Planning**
 - b. Signage on Buildings**

- 3. Approval Items:**
 - a. NMSU New Residence Hall**
 - b. Sisbarro Park Shade Structures**

- 4. Next Meeting: Wednesday, October 4, 2017, 3:30 PM, Facilities and Services, LCR**

Campus Planning Committee 09/6/17	Current Person Serving or in Job Title (fyj)	# of years in term (new)	term	Attendance September 6, 2017
Voting Members:				
College appointments (voting)				
Agriculture, Environmental & Consumer Sciences ^E	Patti Havstad	2	term expires 8/31/16	Patti Havstad
Arts and Sciences ^O	Jim Murphy	2	term expires 8/31/17	JM
Business ^E	Pat Gavin	2	term expires 8/31/18	
Engineering ^E	Sukumar Brahma	2	term expires 8/31/18	
Education ^O	Joe Berning	2	term expires 8/31/17	
Health and Social Services ^E	Conni DeBlieck	2	term expires 8/31/18	NOT PRESENT
Library ^O	Katie Terpis	2	term expires 8/31/17	Katie Terpis
DACC ^O	Tony Fierro	2	term expires 8/31/17	Tony Fierro
ASNMSU (undergraduate student) ^A	Kevin Prieto	1	term expires 8/31/18	K P
ASNMSU (graduate student) ^A	Arryn Robbins	1	term expires 8/03/18	NOT PRESENT
Faculty Senate ^O	Derek Fisher	2	term expires 8/31/17	
Employee Council ^E	Adam Cavotta	3	term expires 8/31/16	Monica Dunivan
Position (Ex-Officio, voting) Appointments:				
University Architect	Heather Watenpauugh	n/a	confirmed Fall 2015	
Associate Vice President of Administration & Finance	D'Anne Stuart	n/a		TS
Executive Director of Project Development & Engineering	Alton Looney	n/a		Alton Looney
OFS Sustainability Manager	joni newcomer	n/a	confirmed Fall 2011	NOT PRESENT
Executive Vice President and Provost	Dan Howard	n/a	alternate: Greg Fant	D. Howard
Senior Vice President, External Relations	Scott Eschenbrenner	n/a		Scott Eschenbrenner
Vice President, University Advancement	Darlene Nelson	n/a	confirmed 8.20.15	Darlene Nelson
Vice President for Economic Development	Kevin Boberg	n/a		
Vice President for Research	Michelle Gavin	n/a	confirmed May 2014	Michelle Gavin
President's Office	Scott Eschenbrenner	n/a	confirmed Fall 2015	
Director of Special Events	Scott Breckner	n/a	confirmed Fall 2011	SB
Director of Athletics	James Hall	n/a	Representing Mario Moccia, Spring 2015	JH
Director of Environmental, Health, & Safety	Katrina Doolittle	n/a	Dave Shearer: alternate	
Resource (Non-Voting) Members:				
Senior Vice President for Administration & Finance	Andrew Burke	n/a		Andrew Burke
FS Assistant Director, PDE	Jose Loera	n/a		
FS Assistant Director, PDE	Ben Abeyta	n/a		
FS Assistant Director, PDE	Jon Webster	n/a		
Associate Vice President for Facilities & Services	Glen Haubold	n/a		GH
Office of Space Management	Suzanne Montes	n/a		
Associate Vice President of Auxiliary Services	Steve Bettner	n/a		Not present
Parking & Transportation Services	Stella Harvey	n/a		
Chief of Police	Stephen Lopez	n/a		SL
Las Cruces City Council	Greg Smith	n/a	rec'd by Mayor of Las Cruces 11/11	Greg Smith
Dofia Ana County		n/a	recommended by the County Manager	
O = sealed in September of odd numbered years				
E = sealed in September of even numbered years				
A = sealed in September annually				
* all positions may delegate				