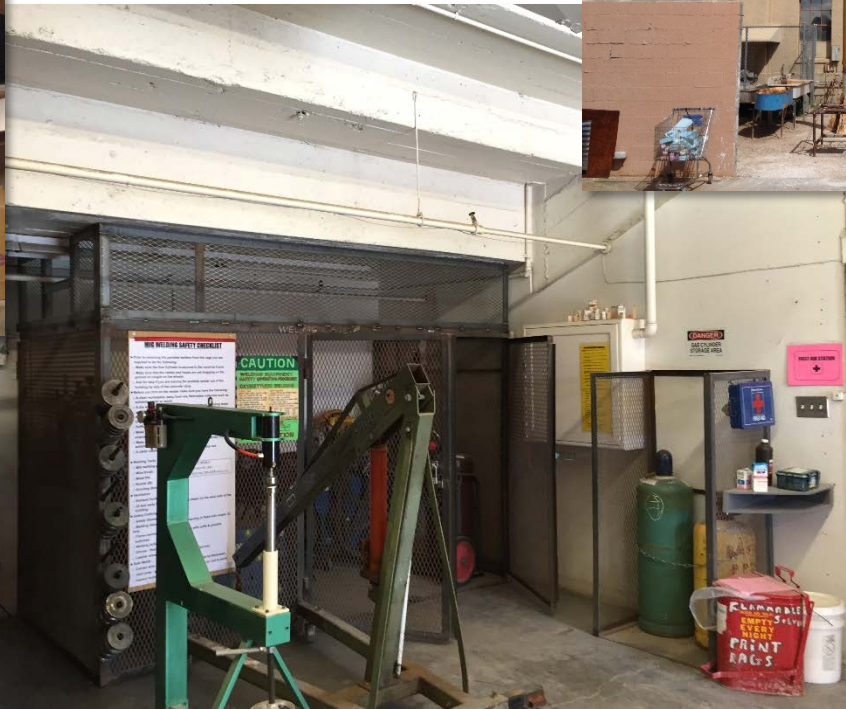


# REPLACEMENT OF DAN W. WILLIAMS HALL NEW ART BUILDING

DESIGN DEVELOPMENT  
FINAL PRESENTATION

MAY 22, 2017





EXISTING BUILDING

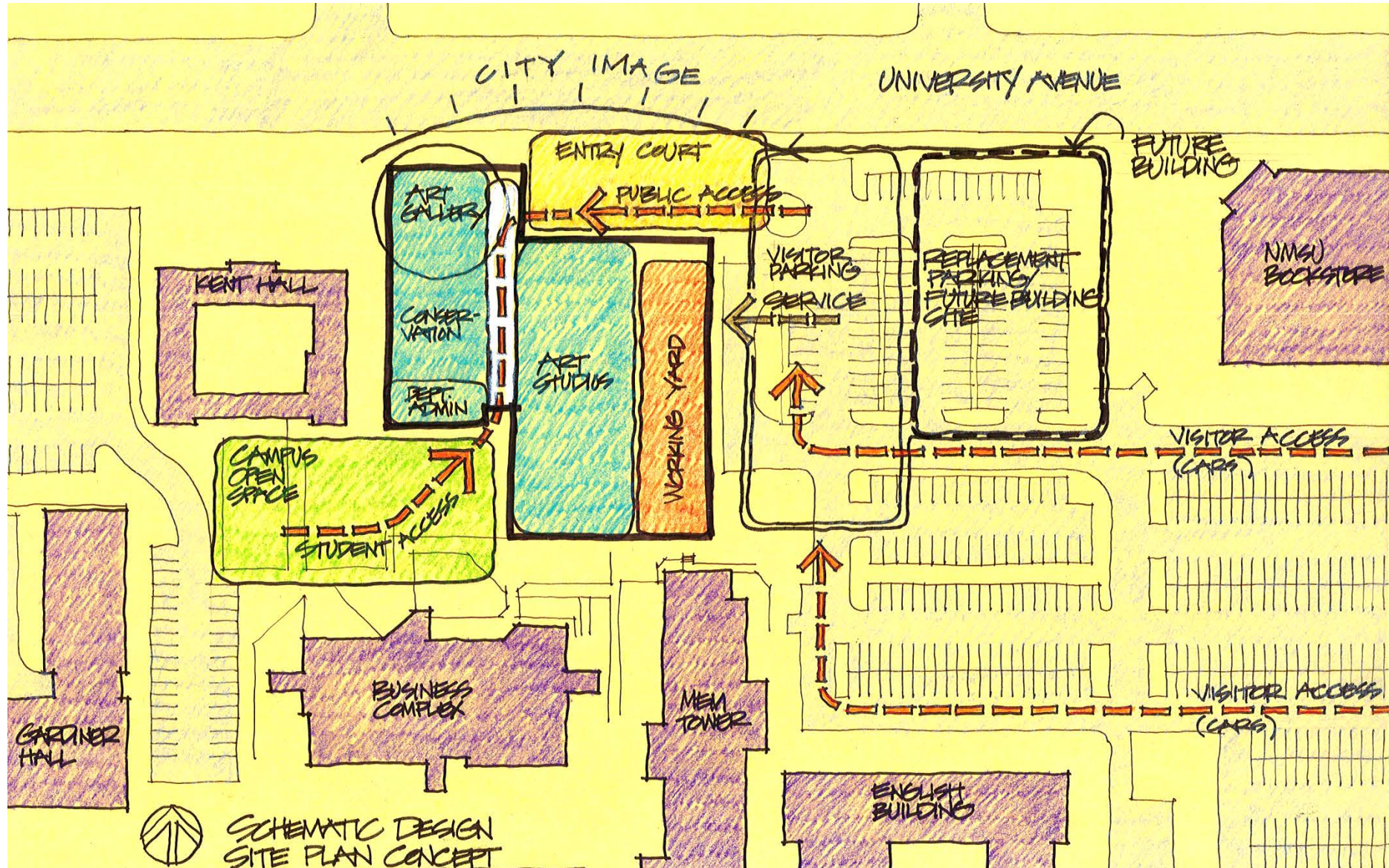


# EXISTING CONTEXT – PROJECT SITE





# SITE AND BUILDING PLAN CONCEPT





# SITE UTILITY CHALLENGES



## KEYED NOTES:

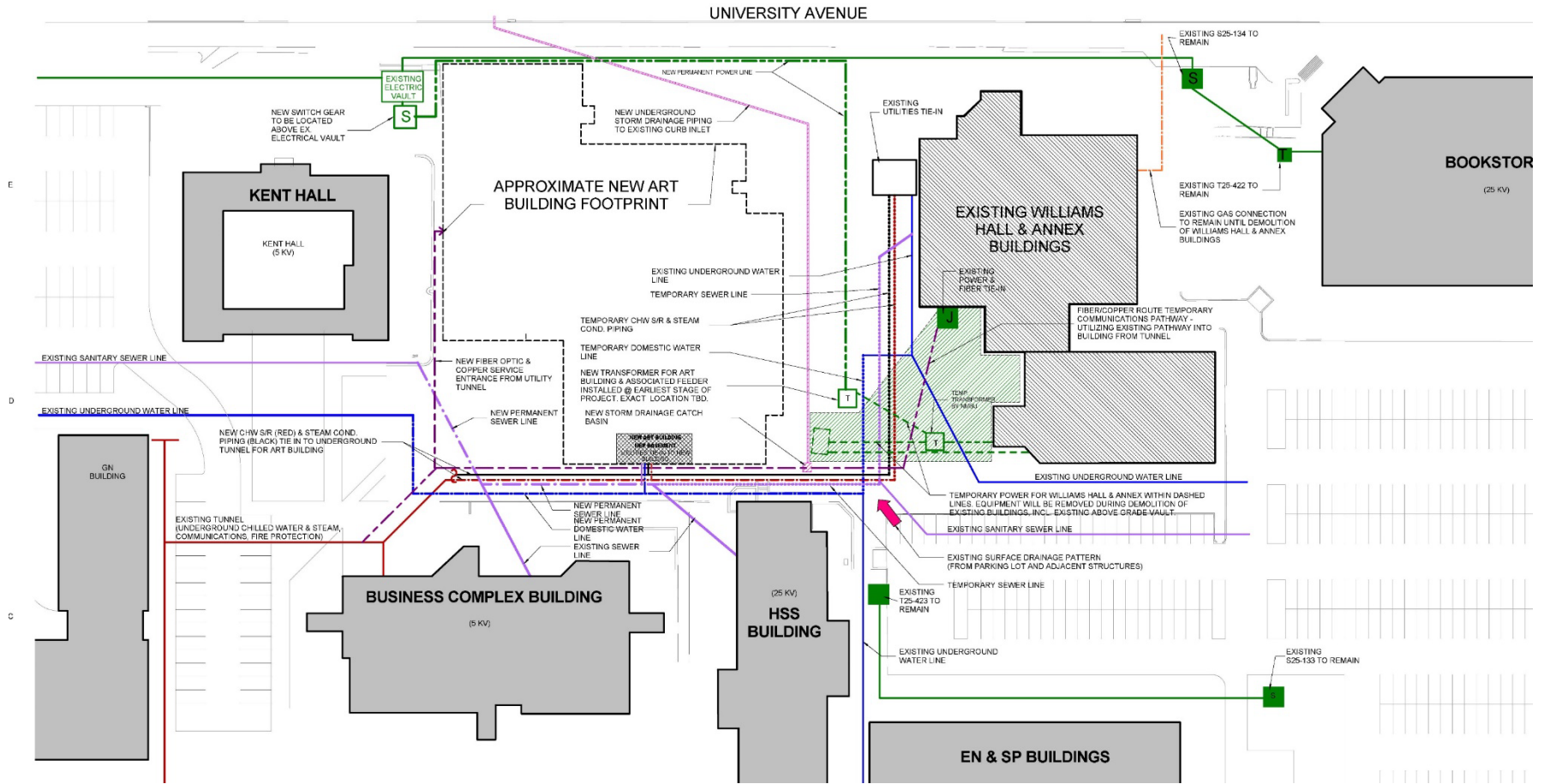
1. LOCATED GAS SERVICE FROM METER TO POINT WHERE SIGNAL ABRUPTLY STOPS (INDICATED ON DIAGRAM). LINE APPEARS TO CONTINUE TOWARDS RISER ON CORNER OF WILLIAMS HALL (INDICATED ON NOTE 2.)
2. GAS LINE IS UNDETECTABLE FROM RISER.
3. WATER LINE PARTIALLY LOCATED FROM CONNECTION TO VALVE. SIGNAL DOES NOT CONTINUE FAR ENOUGH IN EITHER DIRECTION TO ESTABLISH CONNECTIVITY.
4. SAS LATERAL DESIGNATED TO THE EXTENT DUCT ROD WAS INSERTED. DUCT ROD COULD NOT BE INSERTED FURTHER TO ESTABLISH CONNECTIVITY.
5. ELECTRIC VAULT WITH STORM DRAIN TYPE COVER.
6. WATER LINES PARTIALLY DESIGNATED IN AREA BASED ON DIRECT CONNECTION (CONDUCTIVE) TO VALVES AND TRACER WIRE (FOUND IN WESTERN-MOST VALVE CAN).
7. MECHANICAL PIPING – EXACT CONTENTS ARE UNKNOWN.
8. 50 PAIR COPPER TELEPHONE LINE DESIGNATED BY NMSU PERSONNEL.
9. TRAFFIC SIGNAL AND ELECTRIC LIGHTING CIRCUITRY IN AREA DESIGNATED BY OTHERS.
10. DESIGNATED TWO UNKNOWN UTILITY LINES ACROSS PARKING LOT AT LOCATIONS INDICATED ON DIAGRAM (IDENTIFIED WITH RED PAINT ONLY FOR ILLUSTRATIVE PURPOSES).
11. UTILITY VAULT WITH WATER METER TYPE COVER. APPEARS TO BE CURRENTLY EMPTY.
12. FO COMMUNICATION LINE DESIGNATED BY OTHERS.
13. SURFACE EVIDENCE OF WATER LINE IN AREA.

## GENERAL NOTES:

- SANITARY SEWER (SAS) OR STORM DRAIN (SD) PIPING IDENTIFIED USING DETECTABLE DUCT RODS INSERTED INTO ACCESSIBLE LATERALS OR MAINS THROUGH CLEANOUTS, DROP INLETS OR MANHOLES. DIAGRAM DEPICTS THE EXTENT OF SANITARY SEWER OR STORM DRAINS IDENTIFIED USING THE DISCUSSED METHODOLOGIES.
- WATER LINES IDENTIFIED USING CONDUCTIVE METHODS FROM DIRECT CONNECTION TO ACCESSIBLE WATERLINE SOURCES. DIAGRAM DEPICTS THE EXTENT OF WATER LINES IDENTIFIED USING CONDUCTIVE METHODS (UNLESS NOTED OTHERWISE).
- THIS SITE UTILITY DIAGRAM IS A REPRESENTATION OF ASCERTAINABLE UTILITY LINES IDENTIFIED BY HIGH MESA CONSULTING GROUP USING DISCUSSED EQUIPMENT AND METHODOLOGIES. UTILITY DESIGNATION EFFORTS HAVE BEEN BASED UPON CURRENT SITE CONDITIONS INCLUDING SURFACE FEATURES FOUND WITHIN PROJECT BOUNDARIES THAT INDICATE THE PRESENCE OF SUBSURFACE UTILITIES. UTILITY LOCATIONS IDENTIFIED HAVE BEEN REFERENCED TO EXISTING AS-BUILT PLANS, RECORD DRAWINGS OR SITE UTILITY PLANS (PROVIDED BY THE OWNER). THIS SITE UTILITY DIAGRAM IS NOT ALL-INCLUSIVE AND MAY NOT REPRESENT ABANDONED UTILITIES/INFRASTRUCTURE OR PUBLIC UTILITIES IDENTIFIED BY LOCAL UTILITY COMPANIES AND MUNICIPALITIES.
- SUBSURFACE UTILITY DESIGNATION WAS LIMITED TO SURVEY BOUNDARIES/SPECIFIED TASK AND PRIVATELY OWNED UTILITIES (UNLESS NOTED OTHERWISE). THE EXACT PIPE/CABLE SIZE, DEPTH OR MATERIAL OF THE UTILITIES DESIGNATED BY THIS EFFORT IS UNKNOWN.
- SUBSURFACE UTILITY LOCATIONS REPRESENTED ON THIS DIAGRAM AT APPROXIMATE LOCATION AND FOR ILLUSTRATIVE PURPOSES ONLY (NOT TO SCALE). REFER TO MARKINGS IN FIELD FOR ACTUAL DESIGNATED LOCATION.
- IT IS UP TO THE CONTRACTOR TO NOTIFY ALL AGENCIES IN ADVANCE OF AND DURING EXCAVATION (IN ACCORDANCE WITH NEW MEXICO STATUTE).
- NOT FOR CONSTRUCTION USE.



# UTILITY STRATEGY PLAN TO MAINTAIN OPERATIONS OF WILLIAMS HALL & ANNEX DURING NEW BUILDING CONSTRUCTION

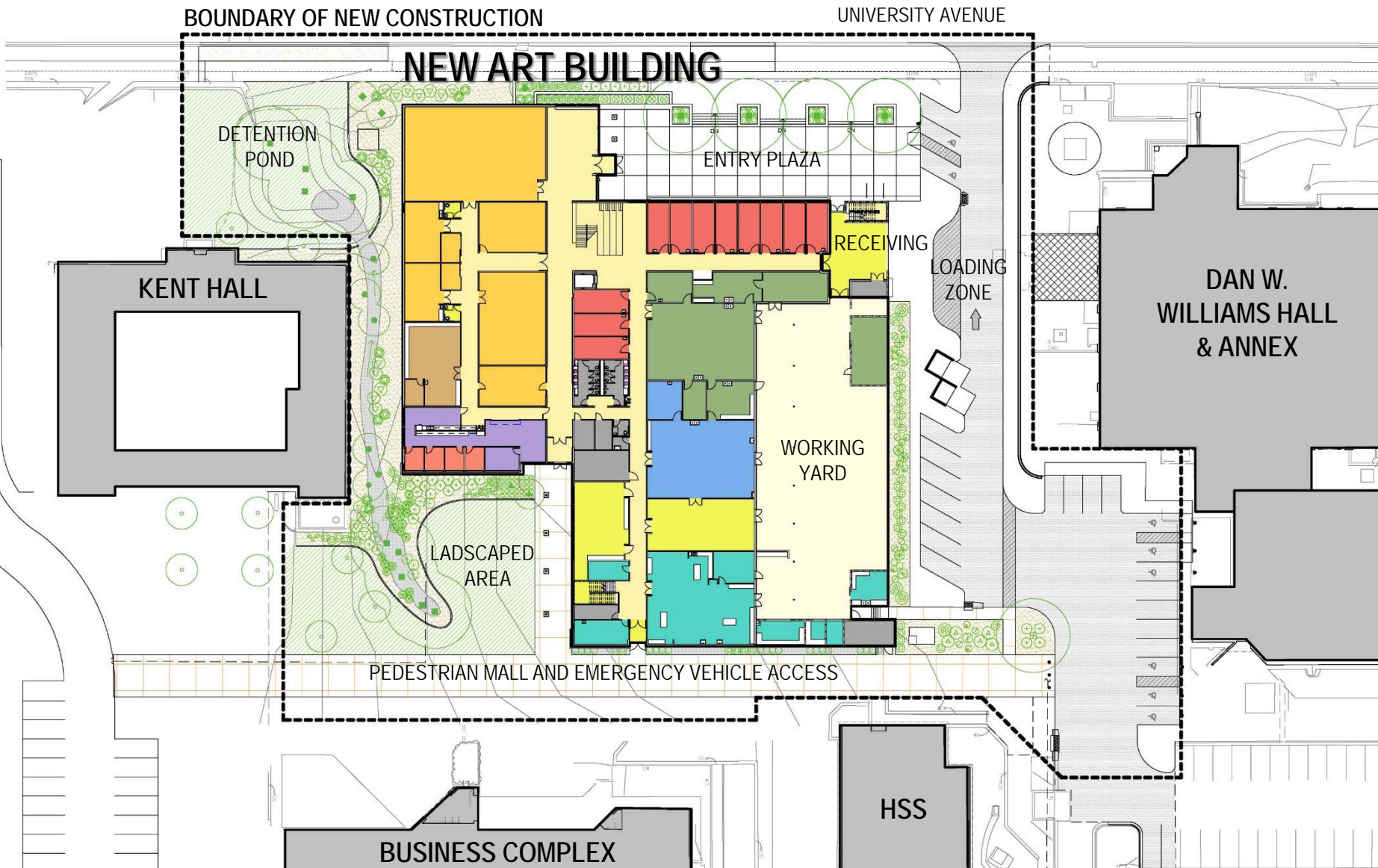


| TEMPORARY UTILITIES LEGEND       |  |
|----------------------------------|--|
| EXISTING TUNNEL                  |  |
| TEMPORARY STEAM/CONDENSATE LINES |  |
| TEMPORARY POWER LINE             |  |
| TEMPORARY WATER                  |  |
| TEMPORARY SEWER                  |  |
| TEMPORARY CHILLED WATER (R & S)  |  |

| PERMANENT UTILITIES LEGEND (SOLID COLORED LINES REPRESENT EXISTING UTILITIES) |  |
|---|--|
| EXISTING TUNNEL   |  |
| STEAM/CONDENSATE LINES  |  |
| POWER LINE  |  |
| WATER   |  |
| SEWER   |  |
| CHILLED WATER (R & S)   |  |

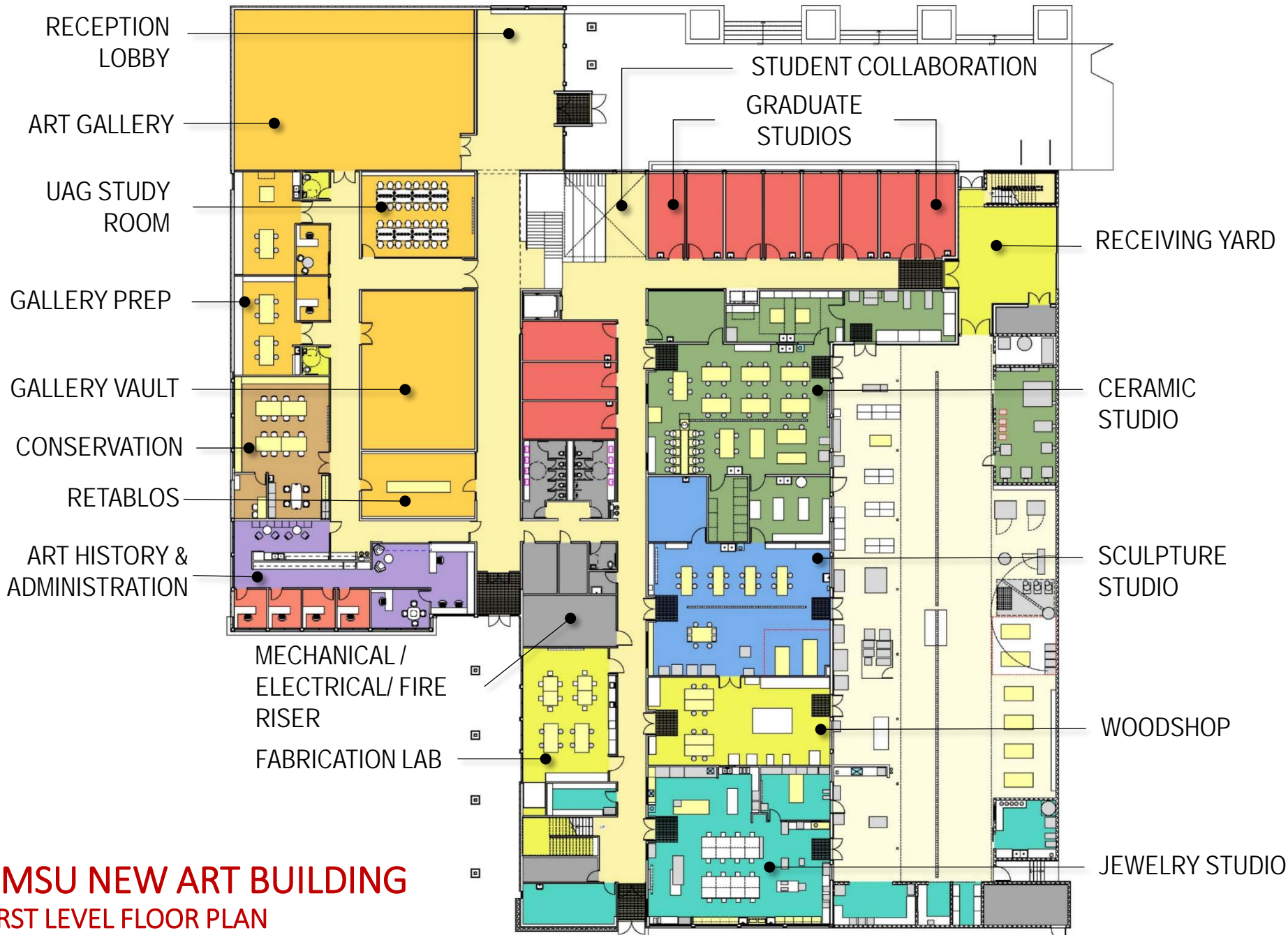
- TRANSFORMER
- SWITCH GEAR
- JUNCTION BOX





**NMSU NEW ART BUILDING**  
**ARCHITECTURAL SITE PLAN**





RECEPTION  
LOBBY

ART GALLERY

UAG STUDY  
ROOM

GALLERY PREP

GALLERY VAULT

CONSERVATION

RETABLOS

ART HISTORY &  
ADMINISTRATION

MECHANICAL /  
ELECTRICAL / FIRE  
RISER

FABRICATION LAB

STUDENT COLLABORATION

GRADUATE  
STUDIOS

RECEIVING YARD

CERAMIC  
STUDIO

SCULPTURE  
STUDIO

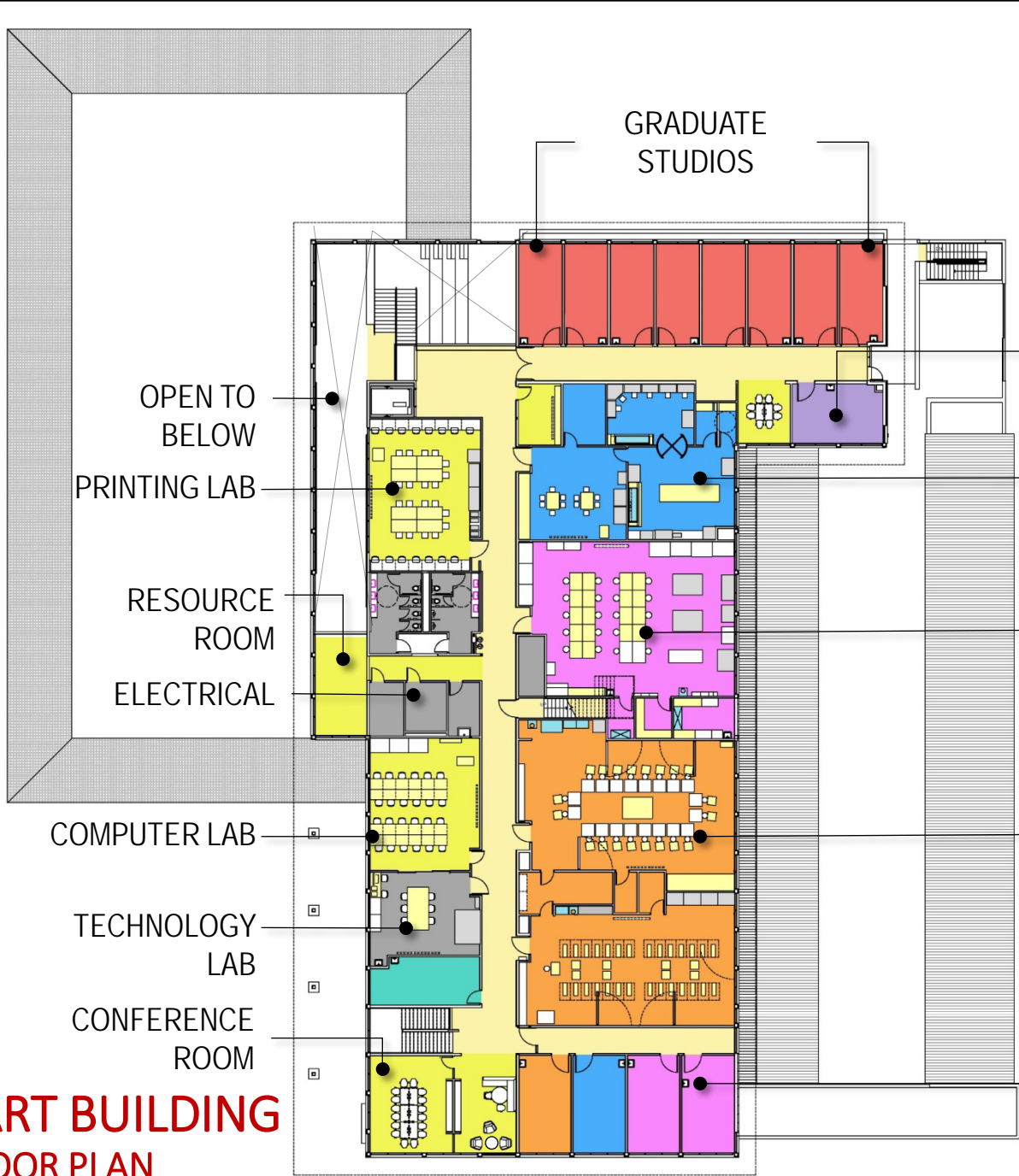
WOODSHOP

JEWELRY STUDIO

**NMSU NEW ART BUILDING**  
FIRST LEVEL FLOOR PLAN



**NMSU NEW ART BUILDING**  
**SECOND LEVEL FLOOR PLAN**



GRADUATE  
STUDIOS

FACULTY STUDIO/  
OFFICE

OPEN TO  
BELOW

PRINTING LAB

PHOTOGRAPHY  
STUDIO

RESOURCE  
ROOM

ELECTRICAL

GRAPHIC DESIGN/  
PRINTMAKING  
STUDIO

COMPUTER LAB

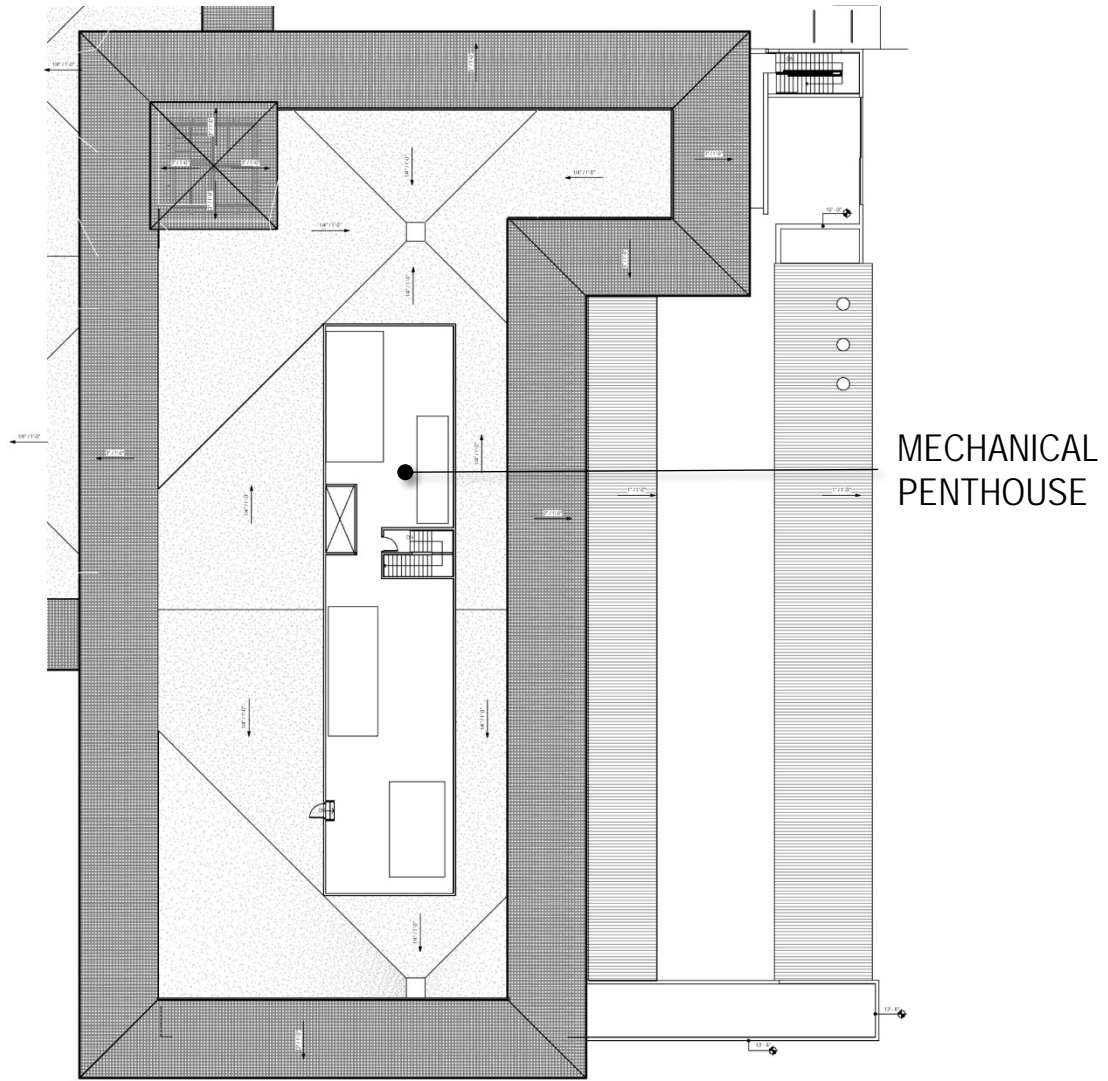
TECHNOLOGY  
LAB

CONFERENCE  
ROOM

DRAWING & PAINTING  
STUDIOS

FACULTY  
STUDIOS/  
OFFICES

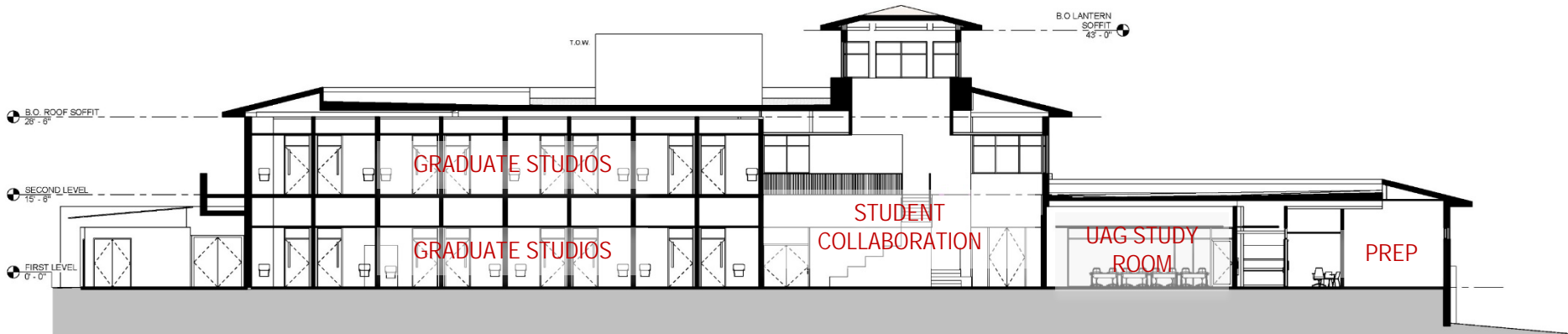




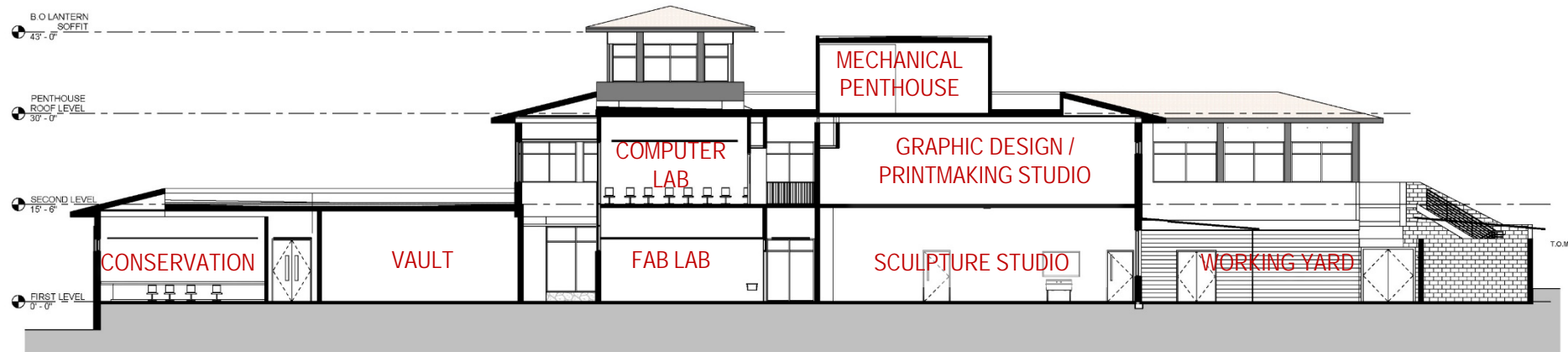
MECHANICAL  
PENTHOUSE

# NMSU NEW ART BUILDING PENTHOUSE FLOOR PLAN





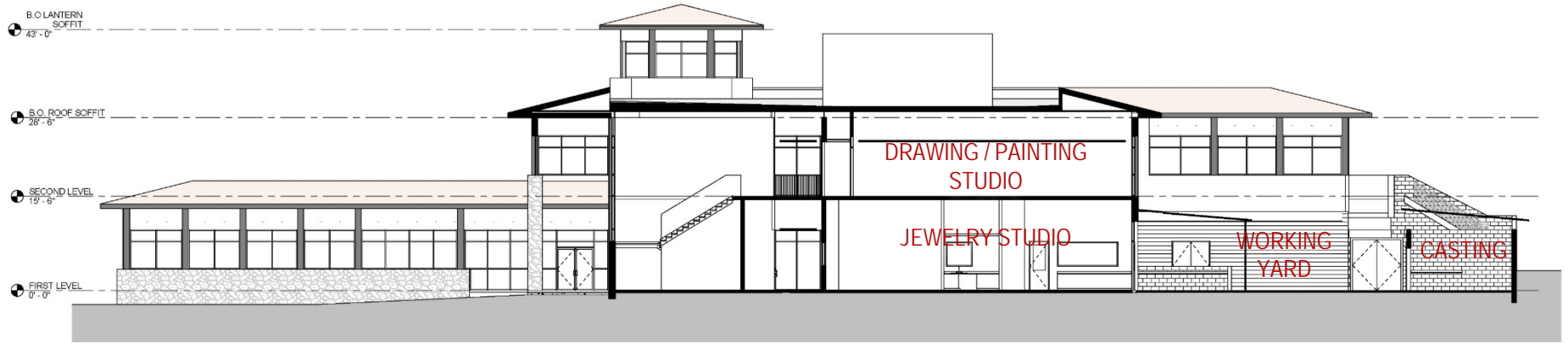
**BUILDING SECTION**



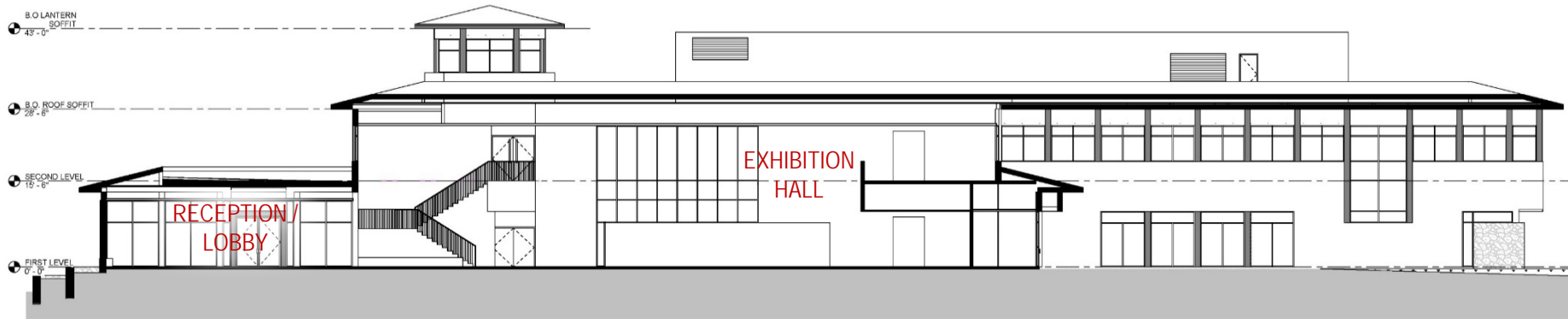
**BUILDING SECTION**

**NMSU NEW ART BUILDING  
BUILDING SECTIONS**





**BUILDING SECTION**



**BUILDING SECTION**

**NMSU NEW ART BUILDING  
BUILDING SECTIONS**





VIEW FROM UNIVERSITY AVENUE

# NMSU NEW ART BUILDING





VIEW FROM UNIVERSITY AVENUE

# NMSU NEW ART BUILDING



VIEW FROM UNIVERSITY AVENUE

## NMSU NEW ART BUILDING





VIEW FROM UNIVERSITY AVENUE

## NMSU NEW ART BUILDING



VIEW TOWARDS BUILDING'S SOUTHWEST CORNER

## NMSU NEW ART BUILDING





VIEW TOWARDS BUILDING'S SOUTHWEST CORNER

## NMSU NEW ART BUILDING



VIEW TOWARDS BUILDING'S SOUTHEAST CORNER

## NMSU NEW ART BUILDING





STUDENT COLLABORATION

**NMSU NEW ART BUILDING**



MAIN LOBBY AND RECEPTION

## NMSU NEW ART BUILDING





EXHIBITION HALL

# NMSU NEW ART BUILDING



STUDENT COLLABORATION AREA FROM THE SECOND LEVEL

## NMSU NEW ART BUILDING





EXHIBITION HALL AND RETABLO GALLERY

**NMSU NEW ART BUILDING**



CONSERVATION LAB

# NMSU NEW ART BUILDING



# PROJECT SCHEDULE

## DESIGN DEVELOPMENT

|                       |                      |
|-----------------------|----------------------|
| Final DD Presentation | Monday, May 22, 2017 |
|-----------------------|----------------------|

|                    |     |
|--------------------|-----|
| Final DD Submittal | TBD |
|--------------------|-----|

## CONSTRUCTION DOCUMENTS

|                                 |            |
|---------------------------------|------------|
| Start of Construction Documents | June, 2017 |
|---------------------------------|------------|

|                                       |                  |
|---------------------------------------|------------------|
| Complete Final Bid Document Submittal | January 05, 2018 |
|---------------------------------------|------------------|

## BID PHASE

|           |                  |
|-----------|------------------|
| Advertise | January 12, 2018 |
|-----------|------------------|

|                    |                  |
|--------------------|------------------|
| Pre-Bid Conference | January 18, 2018 |
|--------------------|------------------|

|                        |                   |
|------------------------|-------------------|
| Deadline for Questions | February 09, 2018 |
|------------------------|-------------------|

|                      |                   |
|----------------------|-------------------|
| Issuance of Addendum | February 23, 2016 |
|----------------------|-------------------|

|                            |                |
|----------------------------|----------------|
| Construction Bids Received | March 08, 2018 |
|----------------------------|----------------|

|  |                |
|--|----------------|
| Notice to Proceed / Pre- Construction Conference | March 30, 2018 |
|--|----------------|

|                       |               |
|-----------------------|---------------|
| Construction Complete | July 19, 2019 |
|-----------------------|---------------|

|                        |                 |
|------------------------|-----------------|
| Open for Fall Semester | August 20, 2019 |
|------------------------|-----------------|



Art is much less important than life, but what a poor life without it.

Robert Motherwell (American Painter)