

FACILITIES & SERVICES
 UNIVERSITY ARCHITECT & SPACE MANAGEMENT
 NEW MEXICO STATE UNIVERSITY
 LAS CRUCES, NM 88003
 PHONE # 646-7734

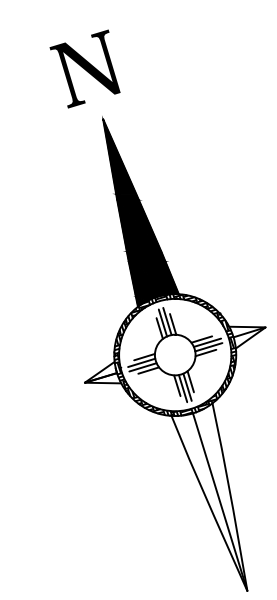
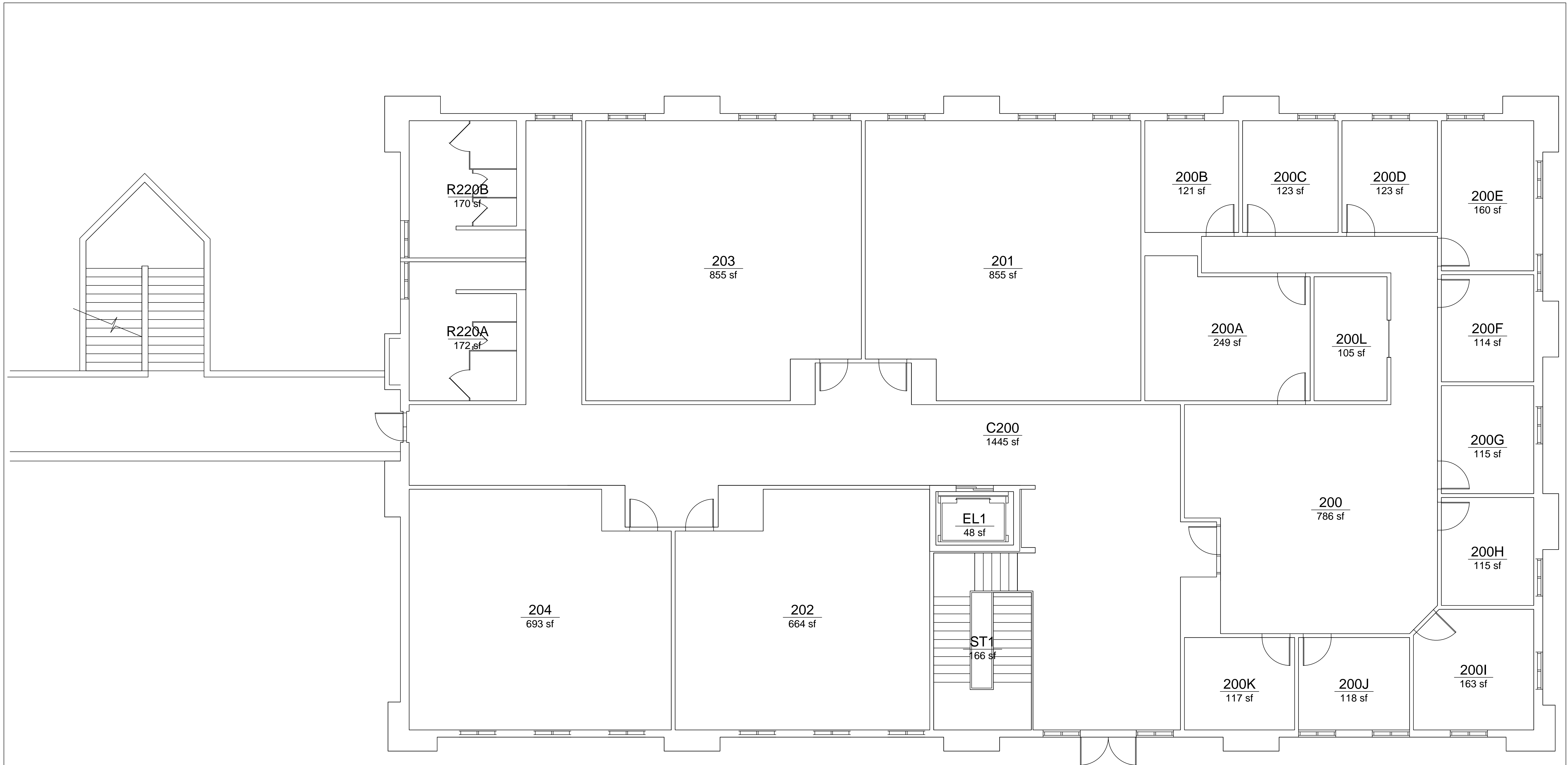
NAME-DACC, EAST MESA, DIGITAL MEDIA, PH-2	DRAWN BY	DATE	NOTES
NUMBER- 606			
ADDRESS- 2800 N. SONOMA RANCH BLVD.	RD	11-17-16	Audited and made updates
YEAR BUILT- 1/1/2006	RD	08-31-17	Update Title Block
BUILDING GSF- 16716			
BUILDING NASF- 15073			
FLOOR GSF- 8347			
FLOOR NASF- 7596			

Room numbers used in this drawing reflect actual room markings where available. Unmarked rooms are assigned a number based upon surrounding room numbers. Please contact this office to coordinate all changes in room numbering.

*Note: This drawing has been prepared for FACILITY AUDIT purposes and is not to architectural drawing specifications. All room dimensions and square footage data are very accurate. Please inform this office of any changes, errors or omissions to maintain accurate drawings and database information.

FLOOR:
1

SHEET:
1-2



FACILITIES & SERVICES
 UNIVERSITY ARCHITECT & SPACE MANAGEMENT
 NEW MEXICO STATE UNIVERSITY
 LAS CRUCES, NM 88003
 PHONE # 646-7734

NAME-DACC, EAST MESA, DIGITAL MEDIA, PH-2	DRAWN BY	DATE	NOTES
NUMBER- 606			
ADDRESS- 2800 N. SONOMA RANCH BLVD.	RD	11-17-16	Audited and made updates
YEAR BUILT- 1/1/2006	RD	08-31-17	Update Title Block
BUILDING GSF- 16716			
BUILDING NASF- 15073			
FLOOR GSF- 8369			
FLOOR NASF- 7477			

Room numbers used in this drawing reflect actual room markings where available. Unmarked rooms are assigned a number based upon surrounding room numbers. Please contact this office to coordinate all changes in room numbering.

*Note: This drawing has been prepared for FACILITY AUDIT purposes and is not to architectural drawing specifications. All room dimensions and square footage data are very accurate. Please inform this office of any changes, errors or omissions to maintain accurate drawings and database information.

FLOOR:
2

SHEET:
2-2